



FIG WORKING WEEK 2023

28 May - 1 June 2023 Orlando Florida USA

Protecting
Our World,
Conquering
New Frontiers

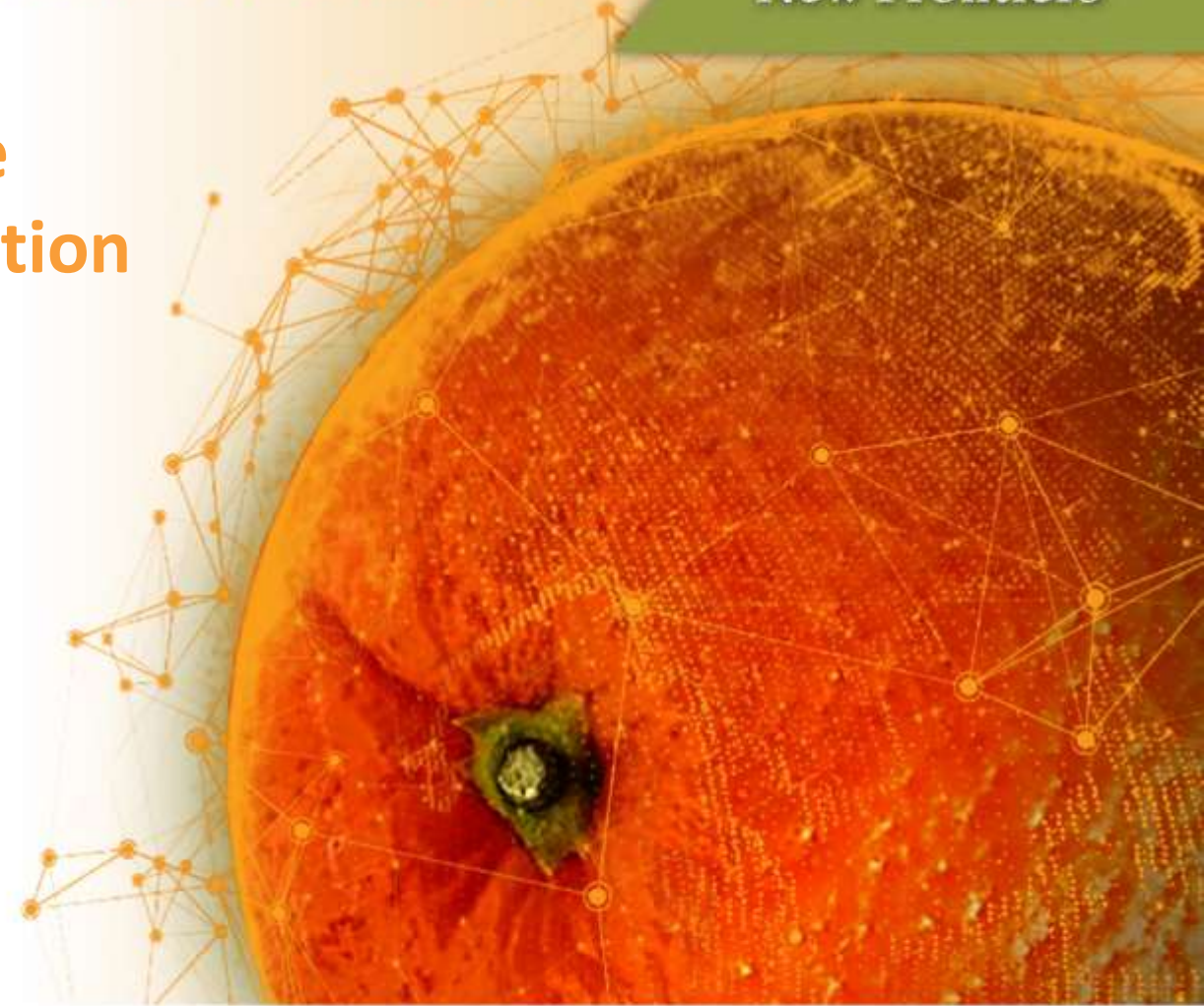
Presented at the FIG Working Week 2023,
28 May - 1 June 2023 in Orlando, Florida, USA

The possibility of using AI tools to the inventory of technical and transportation infrastructure using UAV data

BAKUŁA Krzysztof^{1,2}, ZACHAR Paulina¹, PALAK Radosław²,
BUDA Mateusz², FOLTYN Maksymilian², SOSNOWICZ Konrad²

¹ Warsaw University of Technology,
Faculty of Geodesy and Cartography

² Skysnap Sp. z o.o.



Organized By



Diamond Sponsors



Motivation



The main areas for improvement are:

- Improving the **accuracy of project data**
- better **access** to project data
- streamlining the field **productivity**

There are **3 big trends** that help achieve those goals

Our goal in our R&D project was

- To develop a methodology for using AI in the automatic inventory of construction elements in railway, street, and power network infrastructure

Trend #1 – Drones' market development



- It's a tool for collecting data
 - accurate
 - fast
 - safe
 - autonomous (near future)
- Already about 2.5 mln drones
- Becoming better and cheaper every year -> accelerating growth

Trend #2 – Photogrammetry and geoportals

More processing -> more information

Photos / Videos



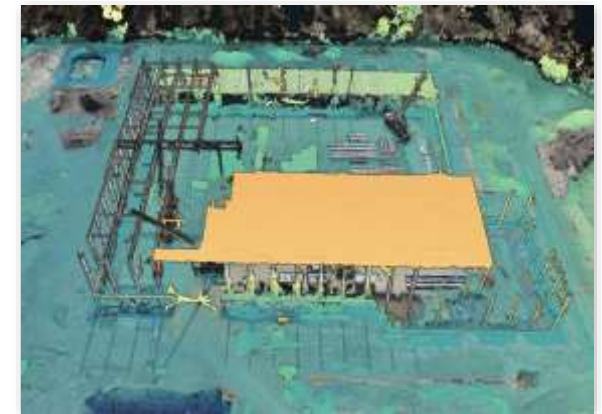
Orthomosaic (2D)



Terrain Models (3D)



Cyclical models /
Management system



Data

- Overall assessment and visualization
 - 2D representation of terrain
 - 1-5 cm accuracy
 - 2D (X, Y) measurements
 - 2D As-Built vs As-Designed
- 3D representation of terrain
 - 3-10 cm accuracy
 - 3D (X, Y, Z) measurements
 - 3D As-Built vs As-Designed
- Progress tracking
- BIM 4D
- Asset management

Goal

Trend #3 - Machine Learning including artificial intelligence



- ML and AI can make geospatial data processing more automated replacing manual work in:
 - Detecting and recognizing infrastructure objects
 - Modelling Surface
 - Measuring in 3D

Scope of analysis in R&D project

Using AI we worked with geodata to detect

- Rail sleepers
- Rails
- Rail gates
- Rail traction poles
- Traction power cables
- Traction network power poles
- Street lights
- Road Stockpiles
- Road construction layers

For each category, photogrammetric products were considered as available source data for detection and recognition

- Nadir images
- Oblique images
- Orthomosaics
- Ortho images
- Dense Image Matching point cloud
- Lidar point cloud

See also: Zachar, P., Ostrowski, W., Bakuła, K., Buda, M., Foltyn, M., Palak, R., & Sosnowicz, K. Application of AI tools to the inventory of technical and transportation infrastructure based on UAV data, FIG Congree 2022



Street lamps
detection



Datasets

Errors in recognition for street lamps with image-based orthogonalized products in UAV-dedicated software



Caused by image adjustment in the orthorectification process involving many images – visible few lamps instead of one



Caused by unstandard orthorectification process involving mesh models instead separated images directly – visible parts of a lamp coming from different images



Caused by using only nadir images for lamp located in central part of images – the visible lamp is in orthogonal projection and only the top of the lamp can not be recognized



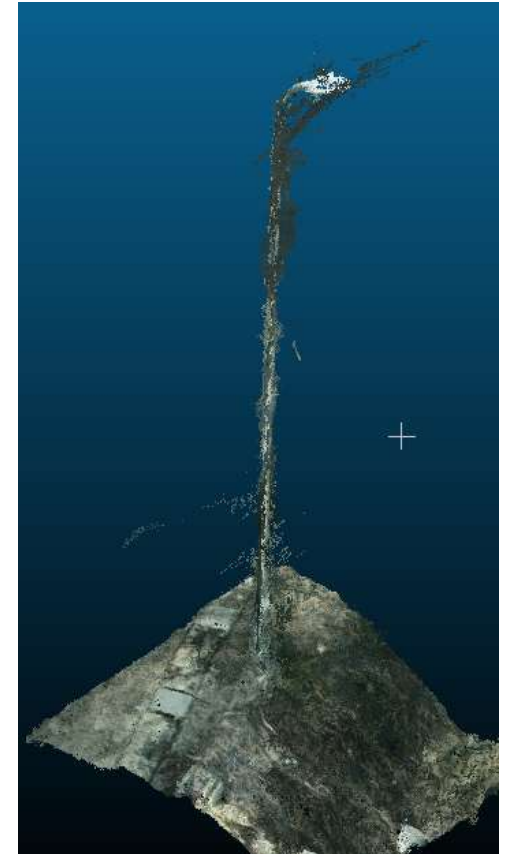
Automatic seam lines in orthorectification can cause a problem in recognizing one element in a few locations

Datasets

Errors in recognition for street lamps with image-based point cloud generated in UAV-dedicated software



DIM in case of nadir images does not bring the point cloud for whole lamp, providing points mostly for lamp head what makes automatic detection difficult cause data for training and for prediction are diverse



DIM of oblique images brings a point cloud showing the whole lamp shape, but sometimes it is much noised due to the high number of overlaps

Datasets

The final decision for type of datasets lamp detection

- Whole shape of the object is visible if the flight is over the road axis or two flight lines with the camera oriented ahead
- Using oblique images with georeference and the results of calibration with mitigation of center projection and camera parameters' influence
- This solution brings the redundancy in one item detection on dozen images that allows for excluding single wrong detections and quality control.



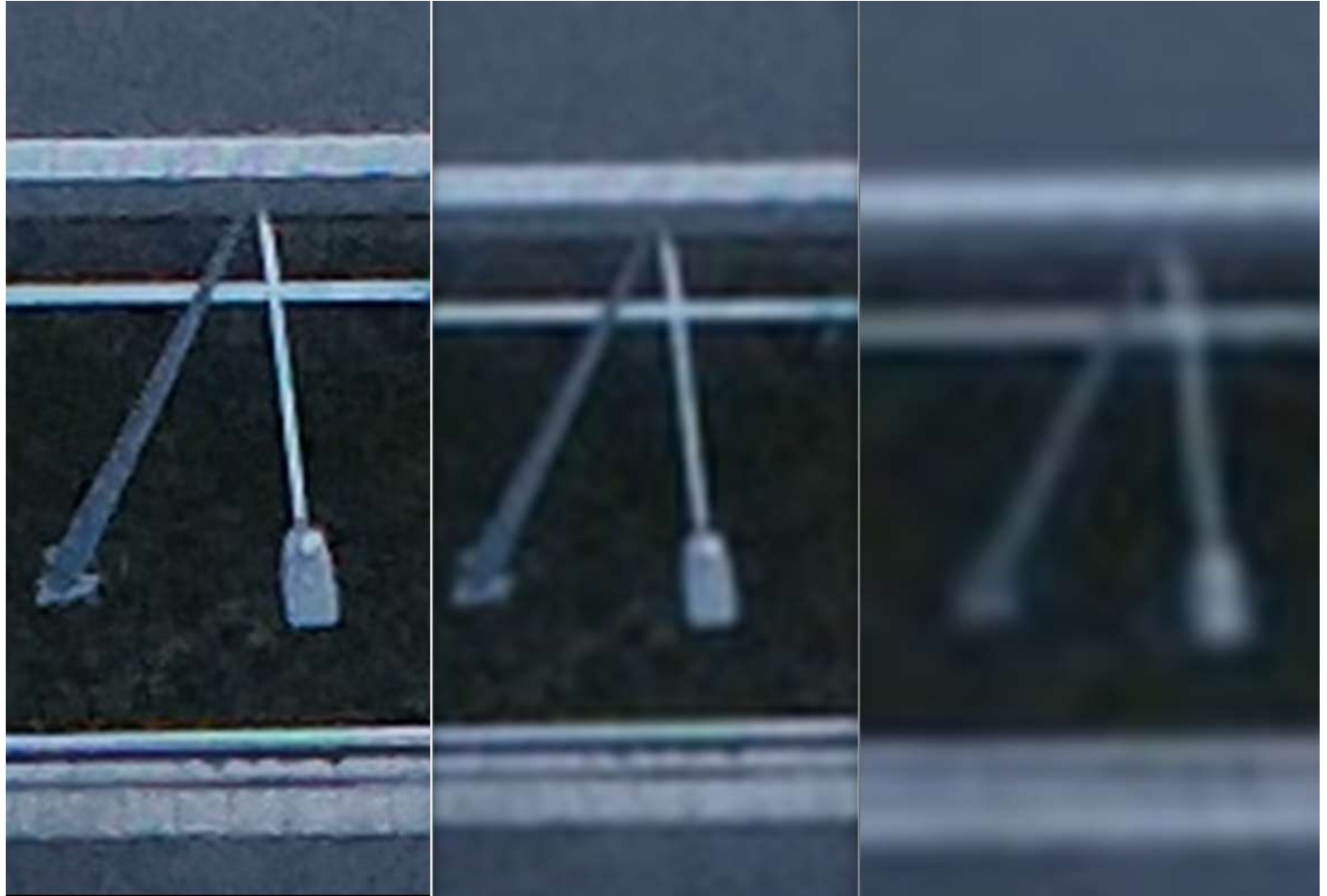
The final decision for the type of datasets lamp detection



Bounding boxes with approximated location (the closest point to the 2D location of image centre of projection – bottom of the lamp)

Datasets – Image collection

- Working on trained models to process the prediction of detection, we must be focused on collecting unified datasets comparable to those from which the model was trained
- Spatial resolution is a crucial factor in the prediction process.
- Most of the training data were captured with 3 cm resolution.
- The results of prediction with different resolutions were not successful
- Before prediction higher resolution should be downgraded to worse but still acceptable, lower resolution was not acceptable



3 cm

5 cm

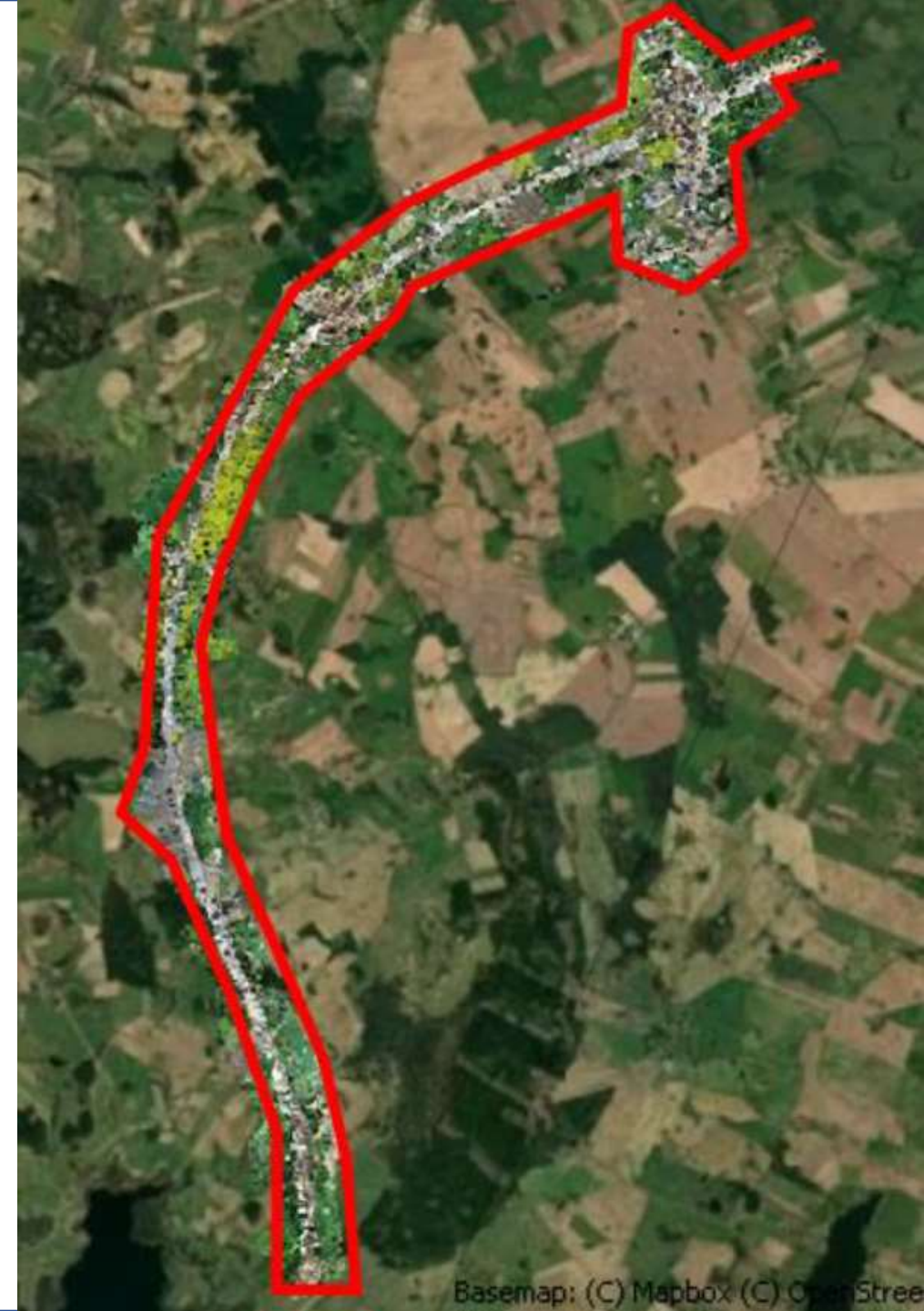
10 cm

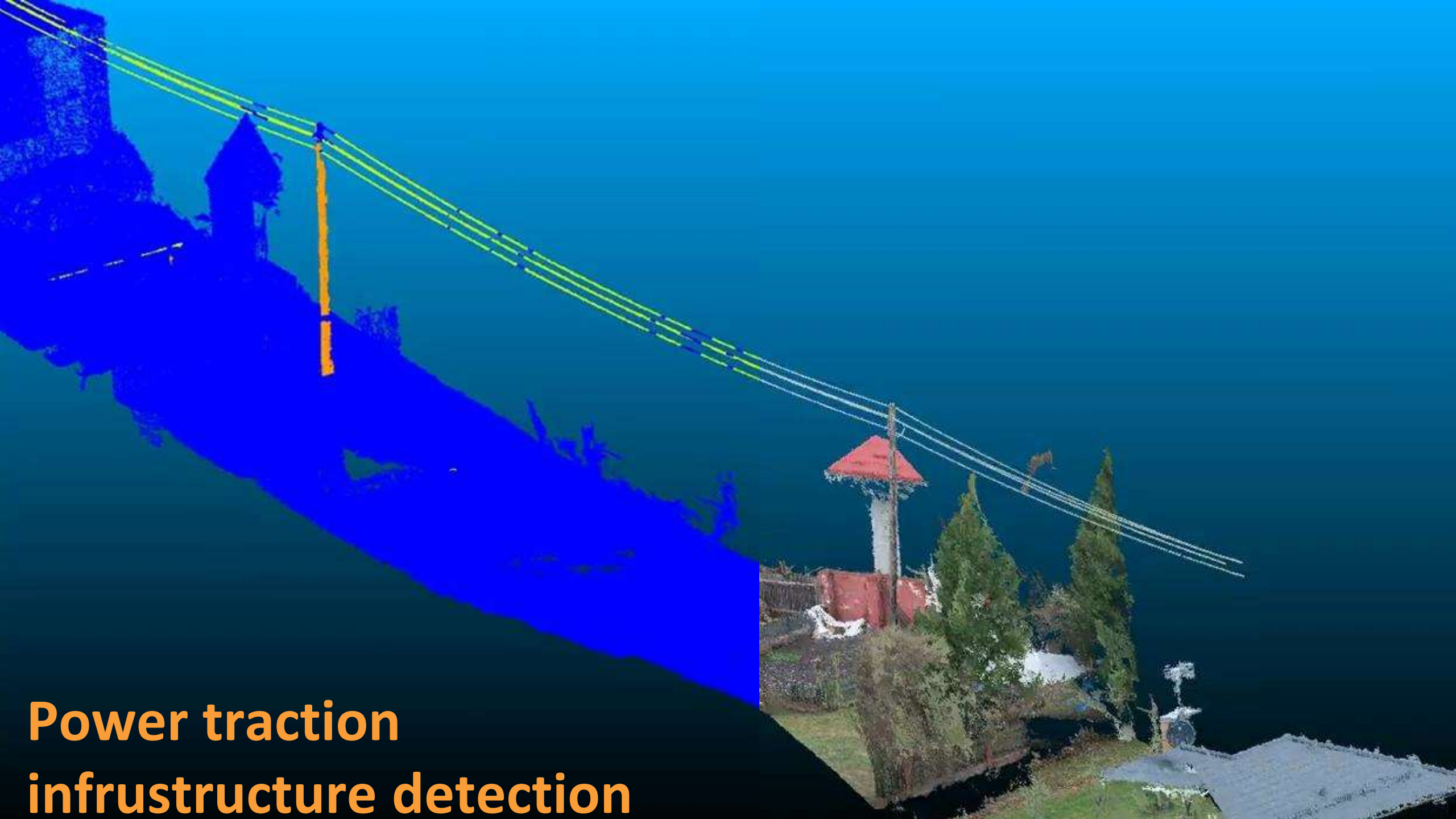
image resolution showing quality of dataset for the street lamp detection

Detection results

- Independent test area in Ełk of 10 km – Northern Poland (Mazury region), 6034 images
- Accuracy (recall), precision and F1 scores analysed (on independent dataset)
- RetinaNet with feature pyramid network (ResNet-50)

Parameter	Value
Accuracy (Recall)	94%
Precision	98%
F1 score	96%

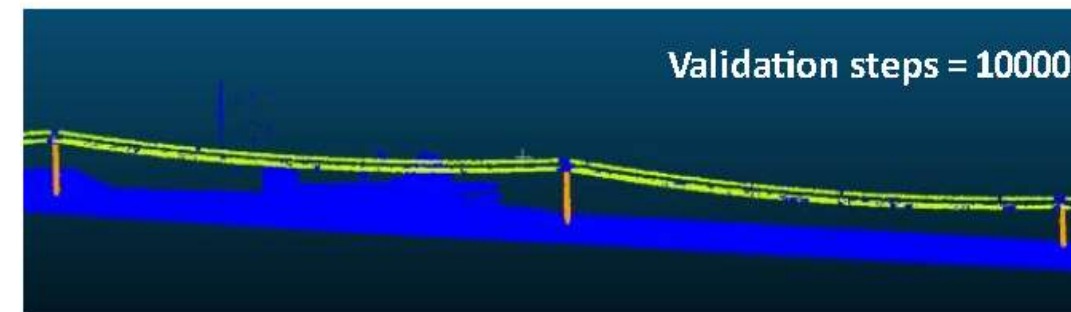
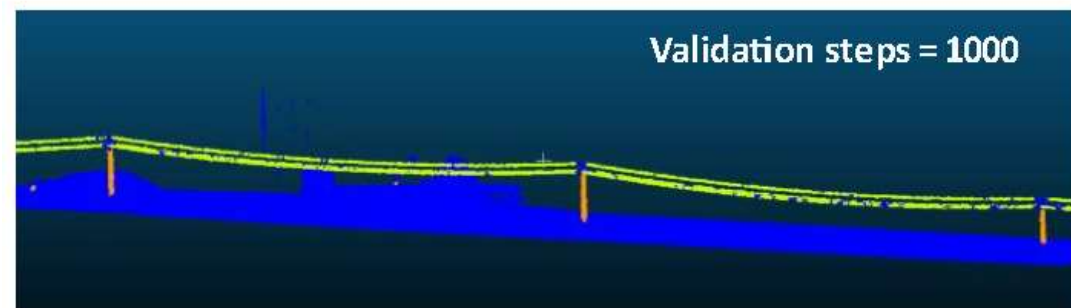




**Power traction
infrastructure detection**

Datasets – why 3D approach

- Training models with 3D because there was a problem with labelling of great length of objects (cables) that are line-type infrastructure
- They are also overlaying very different land cover/use
- Poles are topographically integrated with cables so after unsatisfying results for cables they were detected with lidar or image-based point clouds too



Datasets – what lidar or RGB

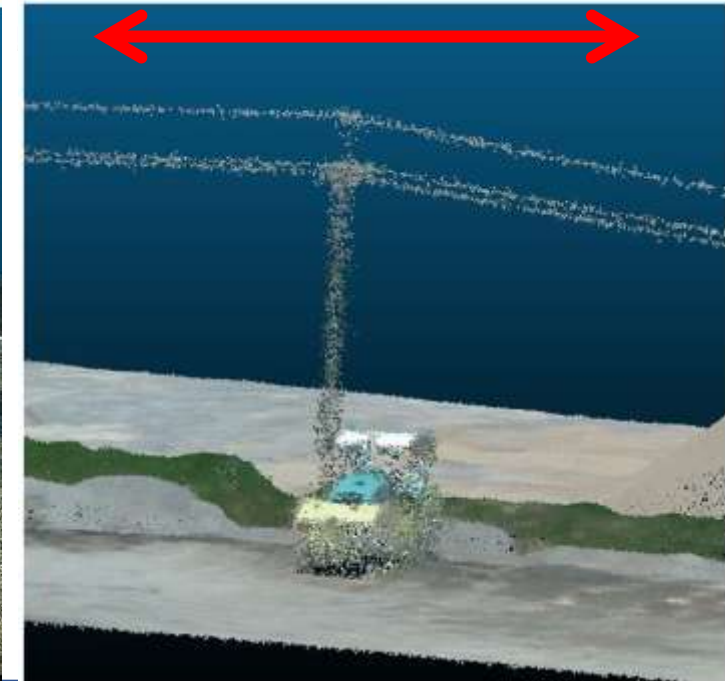
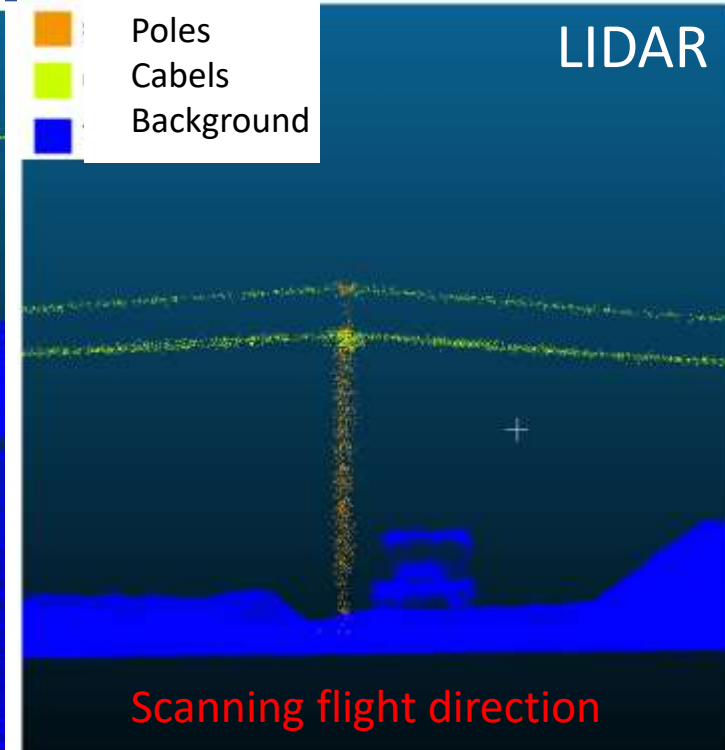
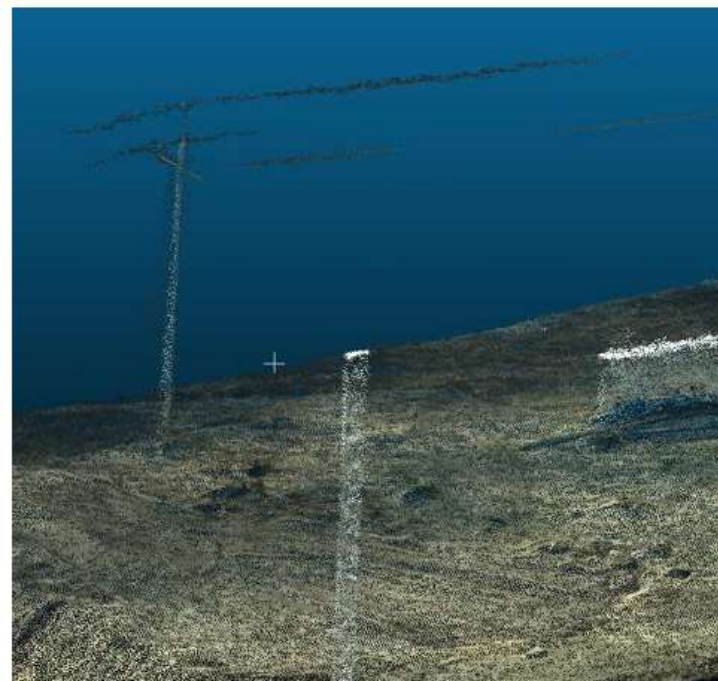
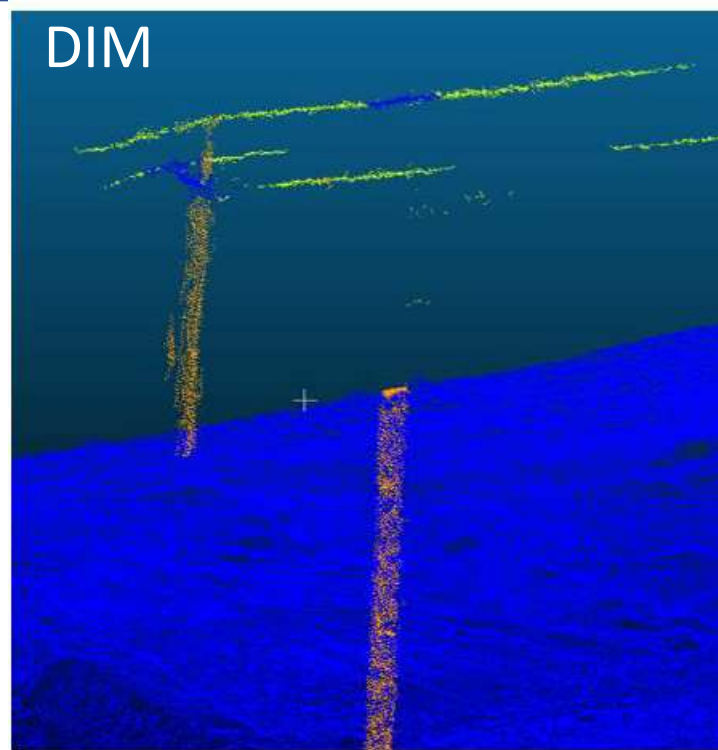
- For AI, point clouds from both sources are 3D products so they should present infrastructure in a reliable way

Dense Image Matching

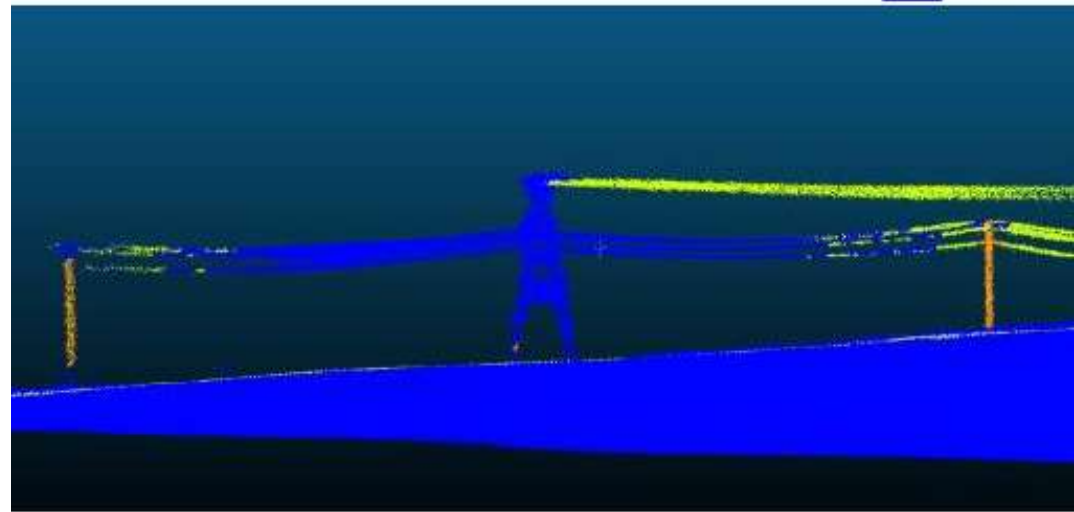
- DIM-based point clouds are the best with oblique images, but still gaps in points representing cables are visible
- relatively low pixel-sized is recommended with a low image footprint versus a safe flight height

Light Detection and Ranging

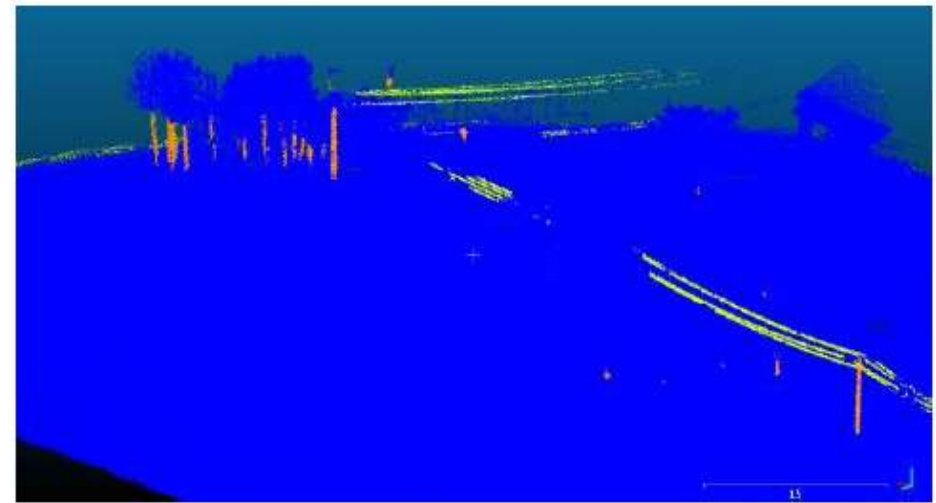
- LIDAR point clouds are more continuous having a regular distribution of points in line
- only corridor flight lines parallelly to infrastructure are recommended
- Flight height should be set considering a safe flight height and scanner range



Factors influencing on the classification results



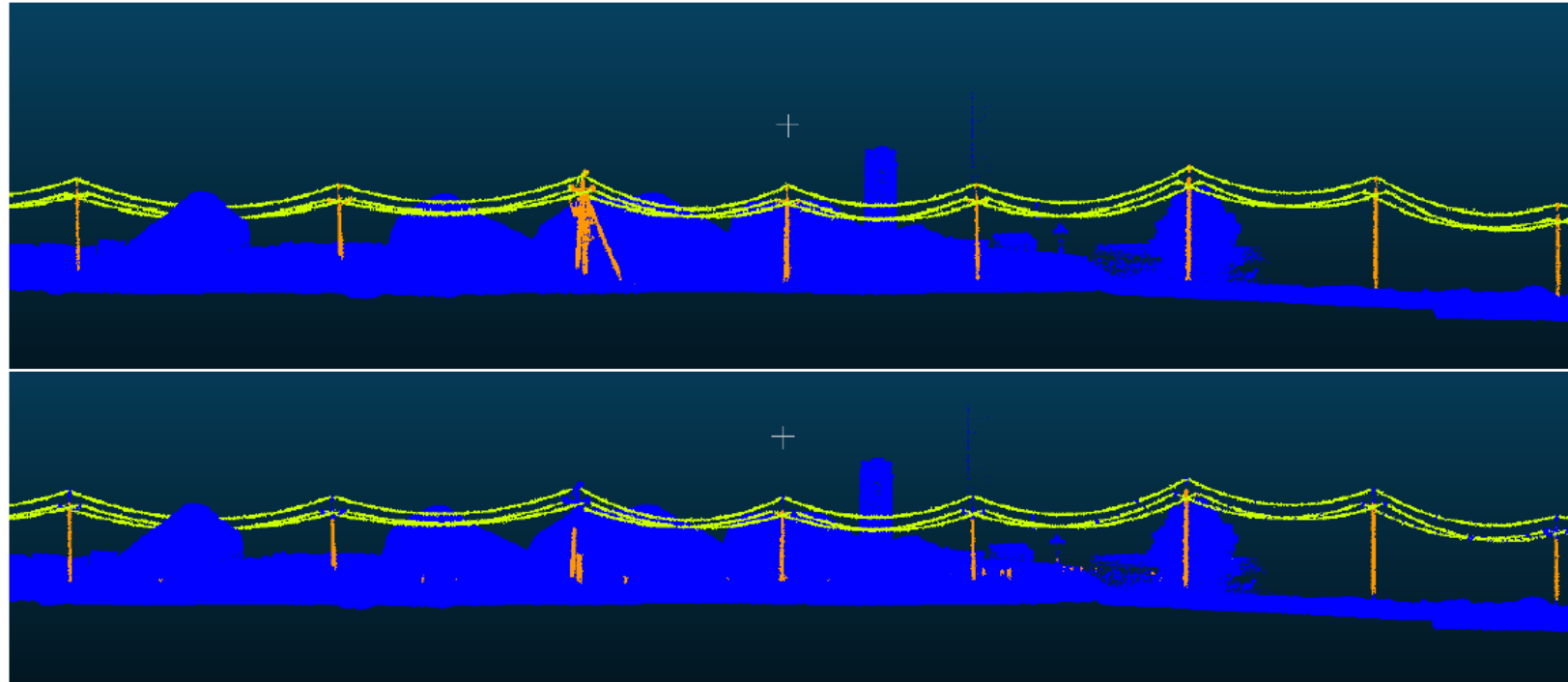
Despite the continuous representation of power cables in the point cloud, the results did not classify the whole line into proper classes – gaps can be filled



In the results of classification many trees were classified as poles – 2D approach or some GIS or BIM data could filter this result out

Detection results

- Independent test area in Mława – Northern Mazovia in Poland,
- DJI L1 point cloud collected with 50 m a.g.l
- RTK GNSS used with minimizing works in a field
- RetinaNet with feature pyramid network (ResNet-50)
- Accuracy (recall), precision and F1, score analysed (on independent dataset)



Parameter	Value for poles	Value for cables
Accuracy (Recall)	98%	74%
Precision	80%	67%
F1 score	67%	67%

Final product GIS database with objects and attributes

Attributes of a single object such as electric pole:

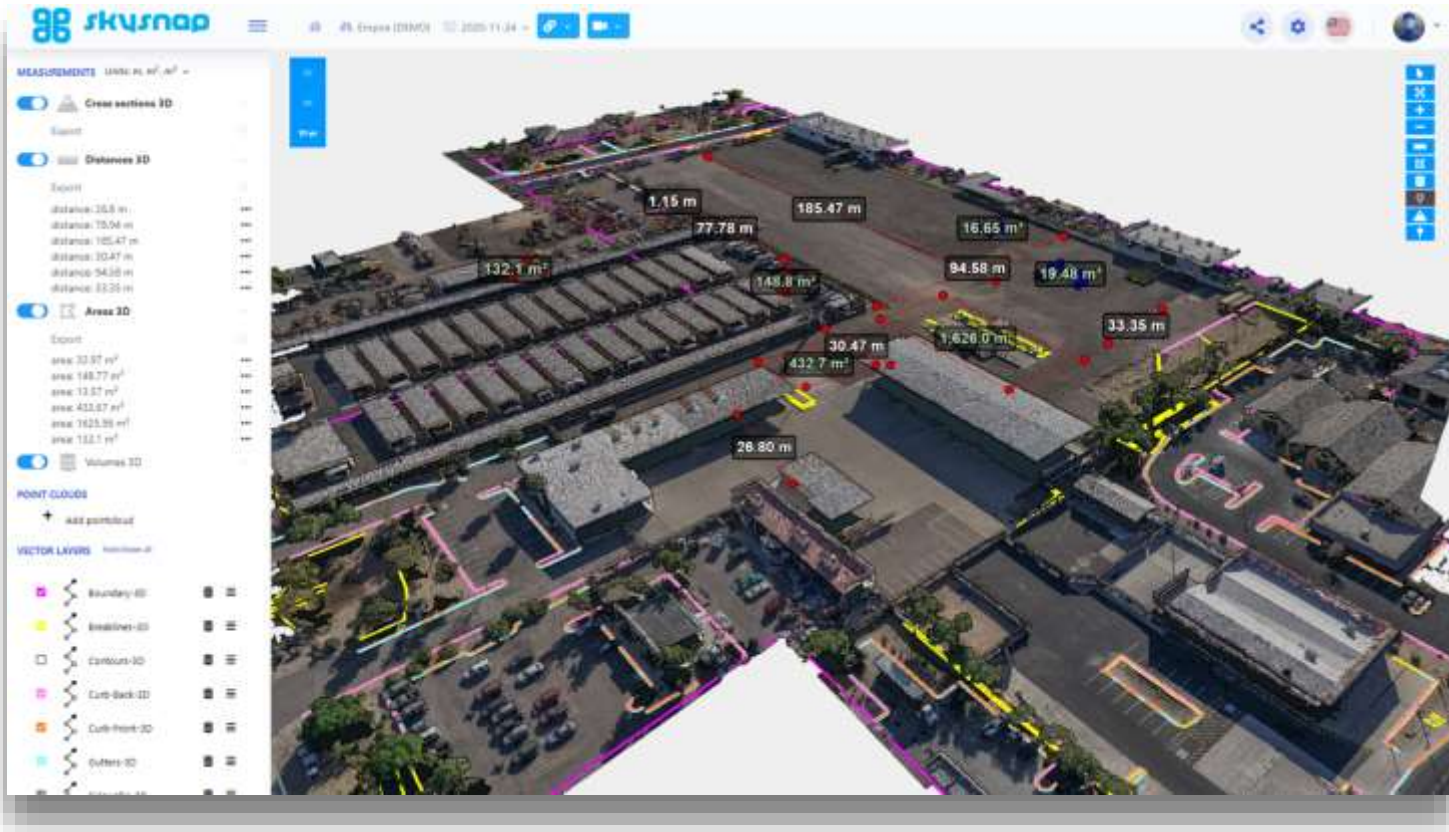
- Localisation x,y,z
- height
- type
- condition

Database of chosen infrastructure objects

OBJECTID	6020
<Null>	<Null>
Juliana Tuwima	Juliana Tuwima
naziemny	naziemny
ogolnodostepny	ogolnodostepny
nie	nie
publiczny	publiczny
ogolne	ogolne
bezpлатne	bezpлатne
nie	nie
nie	nie
poziomoe	poziomoe
niepoprawne	niepoprawne
<Null>	<Null>
5	5
0	0
0	0
4	4
4	4
5	5
3	3
3	3

OBJECTID	Geometry	Shape	Name	Type	Condition	Access	Fee	Other	Other	
4344	Polygon	<Null>	Jana Brzechwy	naziemny	ogolnodostepny	nie	publiczny	ogolne	bezpлатne	nie
4345	Polygon	<Null>	Jana Brzechwy	naziemny	ogolnodostepny	nie	publiczny	ogolne	bezpлатne	tak
4346	Polygon	<Null>	Jana Brzechwy	naziemny	ogolnodostepny	nie	publiczny	ogolne	bezpлатne	nie
4347	Polygon	<Null>	Jana Brzechwy	naziemny	ogolnodostepny	nie	publiczny	ogolne	bezpлатne	tak
4348	Polygon	<Null>	Jana Brzechwy	naziemny	ogolnodostepny	nie	publiczny	ogolne	bezpлатne	nie
4349	Polygon	<Null>	Jana Brzechwy	naziemny	ogolnodostepny	nie	publiczny	ogolne	bezpлатne	tak
4350	Polygon	<Null>	droga wewnetrzna - od Krzysztofa Baczyńskiego	naziemny	ogolnodostepny	nie	prywatny	ogolnodostepny	bezpлатne	nie
4351	Polygon	<Null>	Jana Brzechwy	naziemny	ogolnodostepny	nie	prywatny	ogolnodostepny	bezpлатne	nie
4352	Polygon	<Null>	Jana Brzechwy	naziemny	ogolnodostepny	nie	prywatny	ogolnodostepny	bezpлатne	nie
4353	Polygon	<Null>	Krzysztofa Kamila Baczyńskiego	naziemny	ogolnodostepny	nie	publiczny	ogolne	bezpлатne	nie

Conclusion



- UAVs with sensing and georeferencing sensors provide us datasets ready for automatic processing with AI tools
- Photogrammetry delivers many opportunities to use products with AI-fueled tools
- Automation in photogrammetric dataset processing can deliver vector data for management of investment
- Results must be continuously assessed due to different factors influencing the images

□ Up to **90% improved quality of data**

□ **33% reduced cost** of infrastructure measurement

□ At least **5 x faster** surveying than currently



FIG WORKING WEEK 2023

28 May - 1 June 2023 Orlando Florida USA

Protecting Our World, Conquering New Frontiers

NCBR

National Centre for Research
and Development

The project is carried out by an interdisciplinary research team by SkySnap Sp. z o.o. company and Faculty of Geodesy and Cartography of Warsaw University of Technology within the project entitled, "R&D works in inventory and modelling of key technical and transport infrastructure objects in BIM technology using AI tools in the process of drone data processing", financed by the National Centre for Research and Development, grant no POIR.01.01.01-00-0980/20

Organized By



Diamond Sponsors



Thank you for your attention 😊

krzysztof.bakula@pw.edu.pl



Faculty of Geodesy
and Cartography

WARSAW UNIVERSITY OF TECHNOLOGY



<https://skysnap.com/>



https://www.gik.pw.edu.pl/gik_en



<https://www.facebook.com/SkySnapPolska/>



<https://www.facebook.com/MMNSatWUT/>



<https://www.instagram.com/mmnsatwut/>



<https://twitter.com/MMNSatWUT>