

# FIG WORKING WEEK 2019

22-26 April, Hanoi, Vietnam

Presented by the FIG Working Week 2019,  
April 22-26, 2019 in Hanoi, Vietnam

"Geospatial Information for a Smarter Life  
and Environmental Resilience"



ORGANISED BY



PLATINUM SPONSORS





# FIG WORKING WEEK 2019

22-26 April, Hanoi, Vietnam

"Geospatial Information for a Smarter Life and Environmental Resilience"



Spatial  
Participation

Village Land  
Mapping Result



by Nandang Iskandar  
National Land Agency Indonesia  
Hanoi, 22- 26 April 2019

ORGANISED BY



PLATINUM SPONSORS







# FIG WORKING WEEK 2019

22-26 April, Hanoi, Vietnam

"Geospatial Information for a Smarter Life and Environmental Resilience"



## INTRODUCTION



Target the completion  
of land registration

2017

2025

- Many acceleration strategies have been prepared
- Introducing parcel based participatory mapping.

*'Participatory mapping for support land registration programme in Indonesia was conducted by the initiative of land offices in collaboration with local government.'*

*Parcel based participatory mapping programme in Tangerang Selatan called Sensus PBB dan Pertanahan (Fiscal Cadastre and Legal Cadastre Census)*

ORGANISED BY



PLATINUM SPONSORS





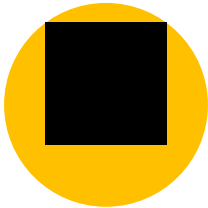
# FIG WORKING WEEK 2019

22–26 April, Hanoi, Vietnam

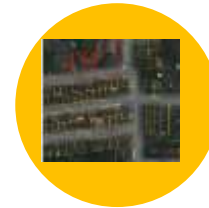
"Geospatial Information for a Smarter Life and Environmental Resilience"



## BACKGROUND STUDY



- Main activities: parcel identification and delineation.
- General Boundary Deliniation



## SPATIAL DATA QUALITY

- Scale Factor and Resolution
- Parcel Boundary Clarity
- Community Abilities
- Error in Land Parcels Boundary Intrepetation

## OBJECTIVE



To review the implementation of parcel based participatory mapping conducted by Tangerang Selatan



to evaluate the quality of spatial data parcels based on participatory mapping result

ORGANISED BY



PLATINUM SPONSORS





# FIG WORKING WEEK 2019

22-26 April, Hanoi, Vietnam

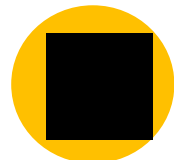
"Geospatial Information for a Smarter Life and Environmental Resilience"



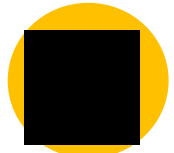
## PARTICIPATORY MAPPING BY TANGERANG SELATAN



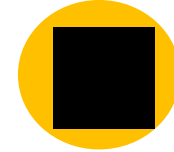
- ❑ Fast Growing Distric
- ❑ 7 Subdictric
- ❑ 147, 19 km2,
- ❑ 1.543.209 inhabitants



Parcel based participatory mapping programme called *Sensus PBB dan Pertanahan* (Fiscal Cadastre and Legal Cadastre Census).  
**(Cooperation Agreement No 01/PKS.36.07/IV/2016)**



Involving community element including village youth organisation



Collected data: land tenure, land value, land tax, land use, and spatial planning suitability.



**Outcome:**

- Local government: land taxation & land permit issuance purposes.
- Land office for supporting land registration programme & improving land administration.

ORGANISED BY



PLATINUM SPONSORS









# FIG WORKING WEEK 2019

22-26 April, Hanoi, Vietnam

"Geospatial Information for a Smarter Life and Environmental Resilience"



## PARTICIPATORY MAPPING



Fig. Participatory Mapping Socialisation



Fig. Community Engagement



Fig. Application "smile cadaster"

ORGANISED BY



PLATINUM SPONSORS







# FIG WORKING WEEK 2019

22-26 April, Hanoi, Vietnam

## PEMETAAN BIDANG TANAH ( Editing, Standarisasi dan Integrasi )

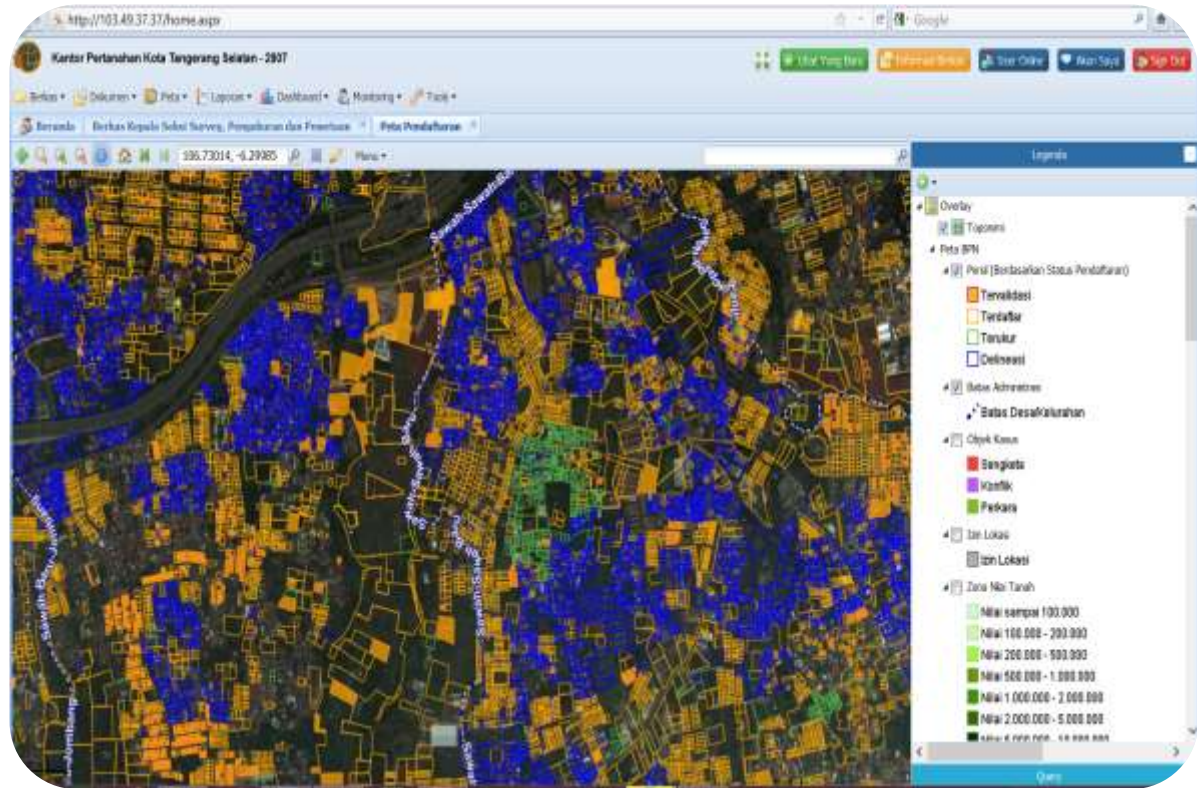
"Geospatial Information for a Smarter Life and Environmental Resilience"



### LAND PARCELS MAPPING

#### Stage :

1. Reposition registered parcel to aerial photo map
2. General Boundary Deliniation (Smile Cadastre)
3. Giving NIB dan NOP to parcel which are already sensus
4. Entry Document Sensus+upload poto



ORGANISED BY



PLATINUM SPONSORS







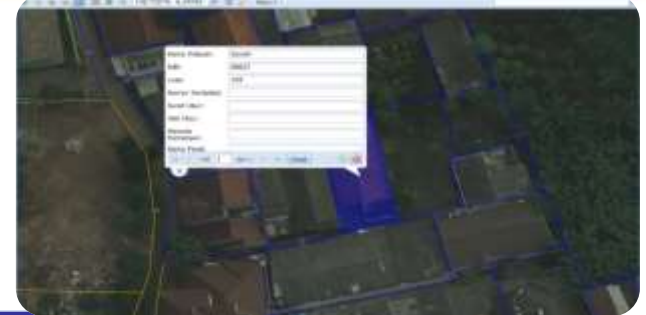
# FIG WORKING WEEK 2019

22-26 April, Hanoi, Vietnam

"Geospatial Information for a Smarter Life and Environmental Resilience"



## CENCUS RESULT DATA IN KKP



**Taxation Data**

NOP/Tahun:	36760001800302600	2015	Cek-Online
Luas (M2):	105		
Nilai Tanah per M2 (Rp):	64470		

**Ownership Data**

Dokumen Kepemilikan:	Akta
Nomor:	012/2000
Tanggal:	09/11/1996

**Subject Data**

NIK:	3173026404660007	Cek-Online
Nama:	SUHARTINE	
Status Perkawinan:	Kawin	
Jumlah Anggota Keluarga:	4	
Alamat Domsil:	JL.CICI	
Menempati Tanah Sejak Tahun:		

**Photo**

File Surat Pernyataan dan Foto Obyek

File Foto:

**Object Data**

Status Penguasaan Tanah:	Sendiri
Tanah tersebut diperoleh:	Jual Beli

ORGANISED BY



PLATINUM SPONSORS





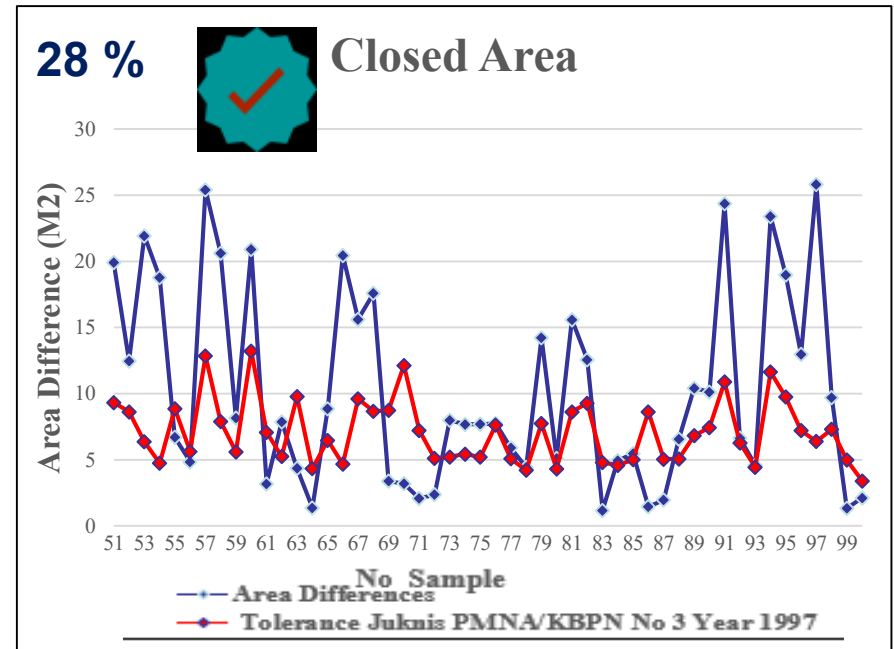
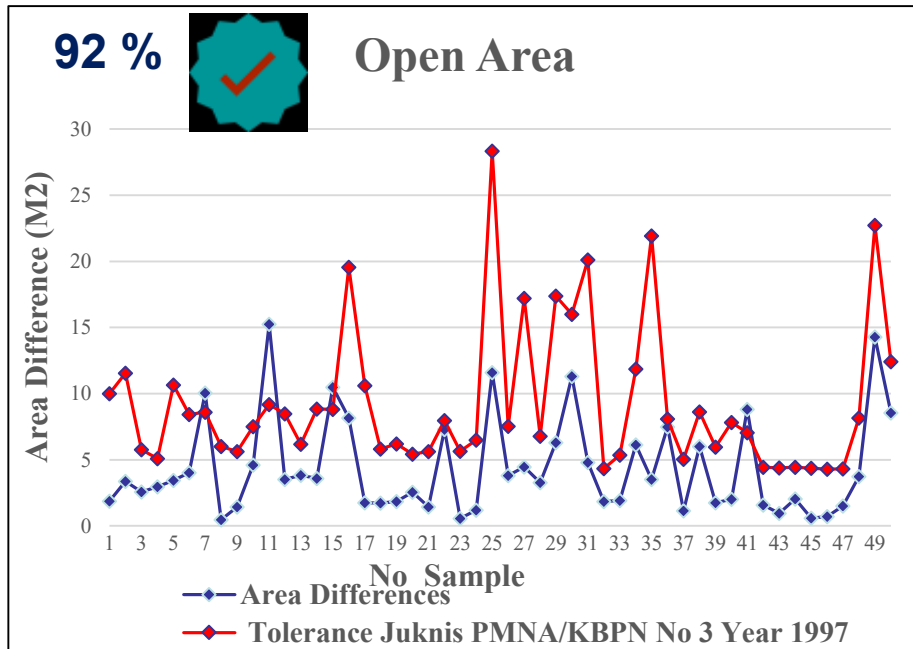
# FIG WORKING WEEK 2019

22-26 April, Hanoi, Vietnam

"Geospatial Information for a Smarter Life and Environmental Resilience"



## AREA ACCURACY TEST



ORGANISED BY



PLATINUM SPONSORS







# FIG WORKING WEEK 2019

22-26 April, Hanoi, Vietnam

"Geospatial Information for a Smarter Life and Environmental Resilience"

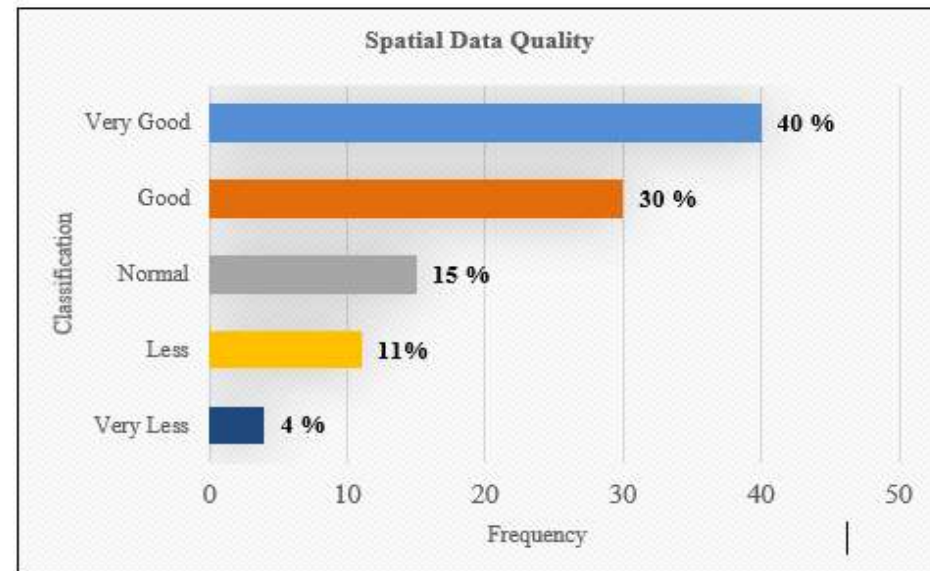


## SPATIAL DATA QUALITY TEST

(SNI-ISO 19113: 2011)

Classification	Methode	Polygon Near Distance	Polygon Area	Polygon Circularity Ratio
Very Good		5	5	5
Good		4	4	4
Normal		3	3	3
Less		2	2	2
Very Less		1	1	1

Class	Classification	Frequency
$13 < x \leq 15$	Very Good	40
$11 < x \leq 13$	Good	30
$9 < x \leq 11$	Normal	15
$7 < x \leq 9$	Less	11
$5 < x \leq 7$	Very Less	4
<b>Total Data</b>		<b>100</b>



ORGANISED BY



PLATINUM SPONSORS





# FIG WORKING WEEK 2019

22-26 April, Hanoi, Vietnam

"Geospatial Information for a Smarter Life and Environmental Resilience"

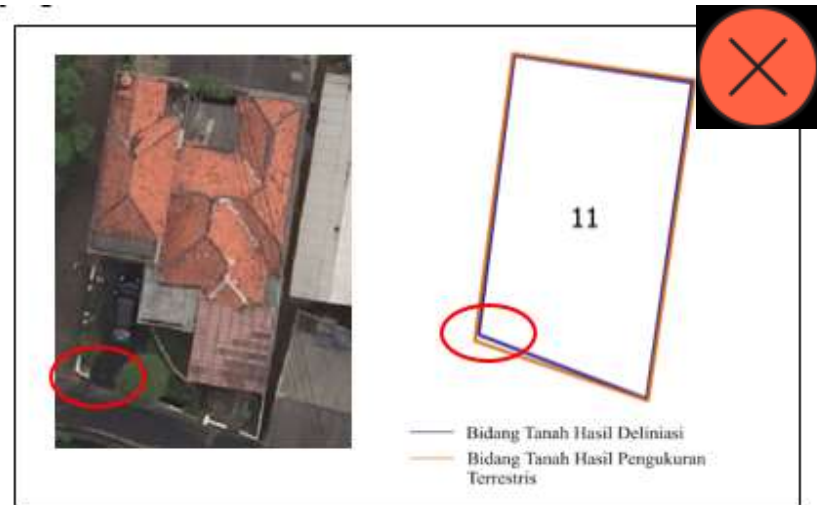


## FACTOR THAT AFFECT SPATIAL DATA QUALITY

(Open Area)



visibility of land parcel boundaries



Error in interpretation of land parcel boundaries

ORGANISED BY



PLATINUM SPONSORS







# FIG WORKING WEEK 2019

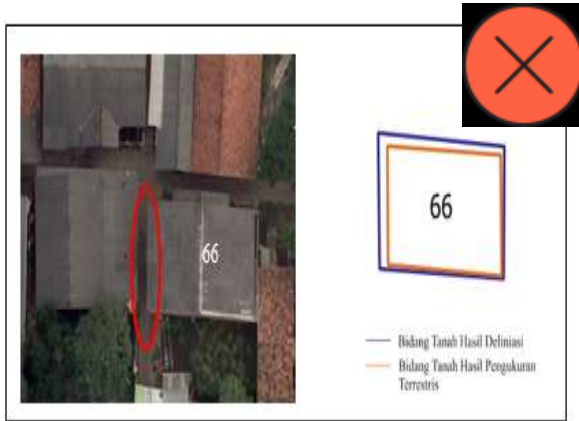
22-26 April, Hanoi, Vietnam

"Geospatial Information for a Smarter Life and Environmental Resilience"



## FACTOR THAT AFFECT SPATIAL DATA QUALITY

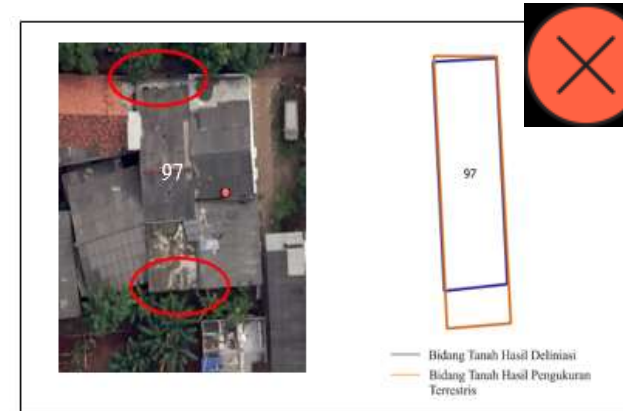
(Closed Area)



land parcel boundaries blocked by building



land parcel boundaries blocked by vegetation



differences in information related to the land parcel boundary by the owner and neighborhood

ORGANISED BY



PLATINUM SPONSORS





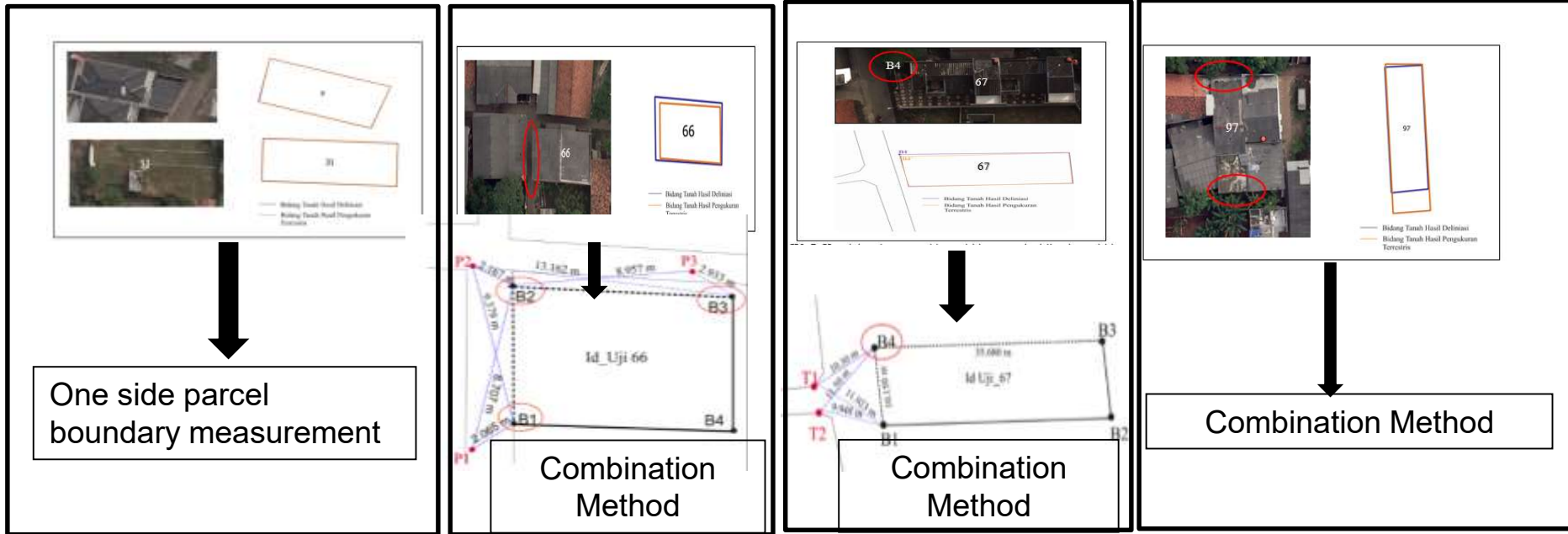
# FIG WORKING WEEK 2019

22-26 April, Hanoi, Vietnam

"Geospatial Information for a Smarter Life and Environmental Resilience"



## QUALITY CONTROL FOR LAND REGISTRATION PROGRAMME



Land Registration Programme

ORGANISED BY



PLATINUM SPONSORS







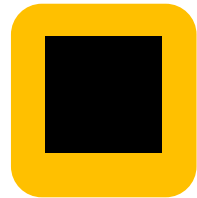
# FIG WORKING WEEK 2019

22–26 April, Hanoi, Vietnam

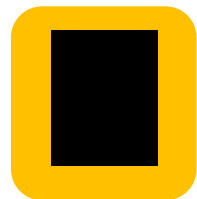
"Geospatial Information for a Smarter Life and Environmental Resilience"



## CONCLUSION



The data of participatory mapping result through FFP-LA approach can be used as preliminary information for land registration programme



In order to proceed into land registration programme, quality control of identified and delineated parcels must be taken by National Land Agency's surveyors or cadastral licensed surveyors

ORGANISED BY



PLATINUM SPONSORS





# FIG WORKING WEEK 2019

22–26 April, Hanoi, Vietnam

"Geospatial Information for a Smarter Life and Environmental Resilience"



# Thank You

## CONTACTS

**Kariyono**

Center of Human Resource Development  
Ministry of Land Affairs and Spatial Planning /  
National Land Agency

Jl. Akses Tol Cimanggis Cikeas Udik, Gunung Putri,  
Bogor, Jawa Barat, 16966

INDONESIA



Telp [\(+621\) 8674586](tel:+6218674586) / +6281390516630

Email: [kariyono.atrbpn@gmail.com](mailto:kariyono.atrbpn@gmail.com)

Web site: [www.atrbpn.go.id](http://www.atrbpn.go.id)

ORGANISED BY



PLATINUM SPONSORS

