



Presented at the FIG Congress 2018,
May 6-11, 2018 in Istanbul, Turkey

6-11 May 2018
ISTANBUL

XVI FIG Congress 2018

Geographical Names : Detailing map and enhancing GIS



EMBRACING OUR SMART WORLD WHERE THE CONTINENTS CONNECT:
ENHANCING THE GEOSPATIAL MATURITY OF SOCIETIES

ORGANISED BY



MAIN SUPPORTERS



PLATINUM SPONSORS





PRESENTATION STRUCTURE Congress 2018

6-11 May 2018
ISTANBUL

- Why geographic names?
- Who Decides What Names Go on a Map
- Significance and Standardization
- National agenda dan global awareness



ORGANISED BY



T.C.
ÇEVRE VE ŞEHİRCİLİK
BAKANLIĞI

Tapu ve Kadastro Genel Müdürlüğü

Ulusal Coğrafya Kurumu

Coğrafya Kurumu

CT:
IES

ble.

For 125 years, a group you've never heard of has been helping create a common language for the world's place – geographical name

FIG
2018
ISTANBUL

FIG Geographical Names Conference 2018



NATIONAL GEOGRAPHIC CREATIVE

ORGAN



JECT:
ETIES

Geographical names bureau

You are lost and want to find your way?



FIG
2018
ISTANBUL



XXXVIII
6-11 May 2018
ISTANBUL

complementing geographical
data....



BERJAYA
TRACS SQUARE, EKA A LUMPUR - MALAYSIA
HOTEL



SMART WORLD WHERE THE CONTINENTS CONNECT:
ADVANCING THE GEOSPATIAL MATURITY OF SOCIETIES

ORGANISED BY

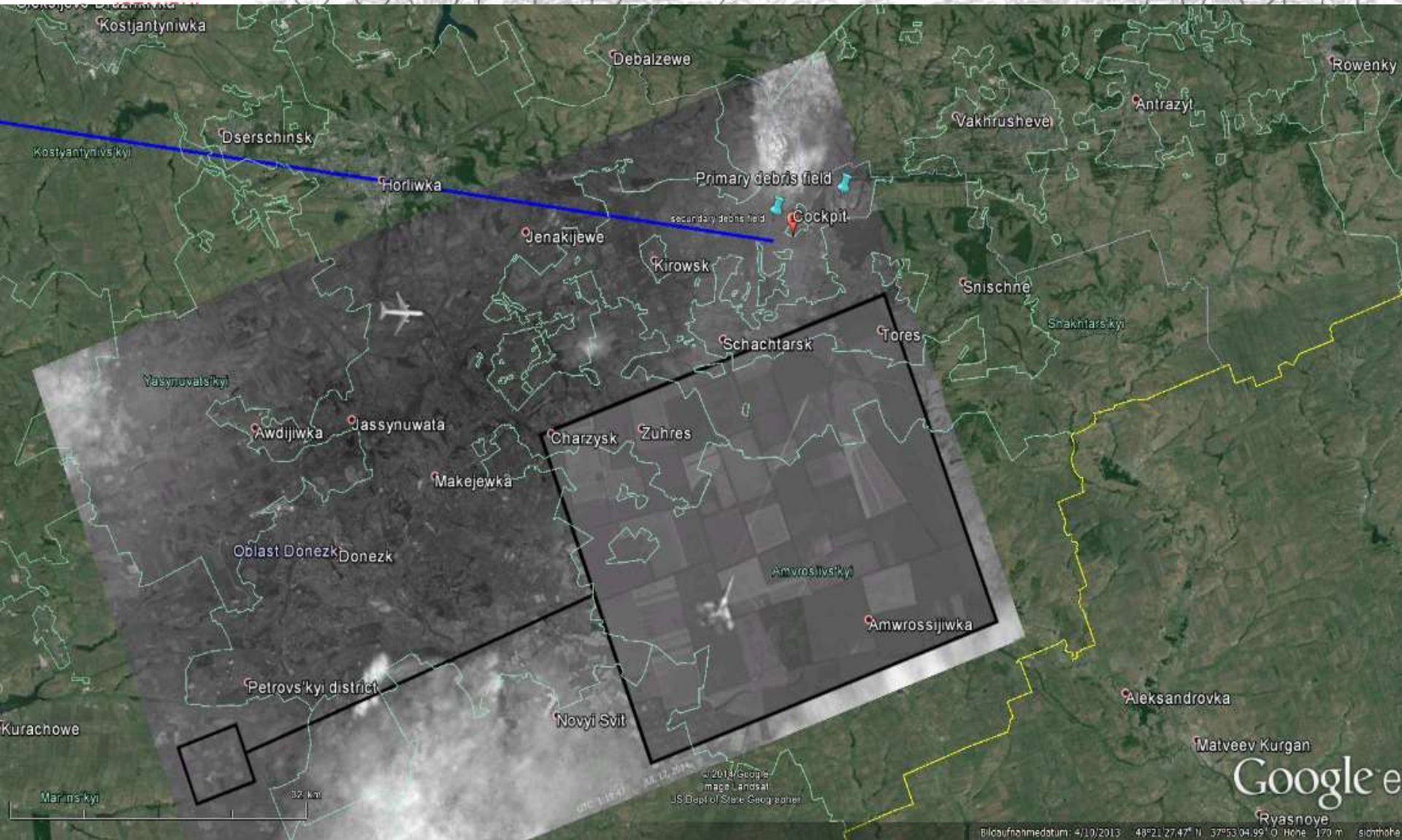


MAIN SUPPORTERS



PLATINUM SPONSORS





ORGANISED BY



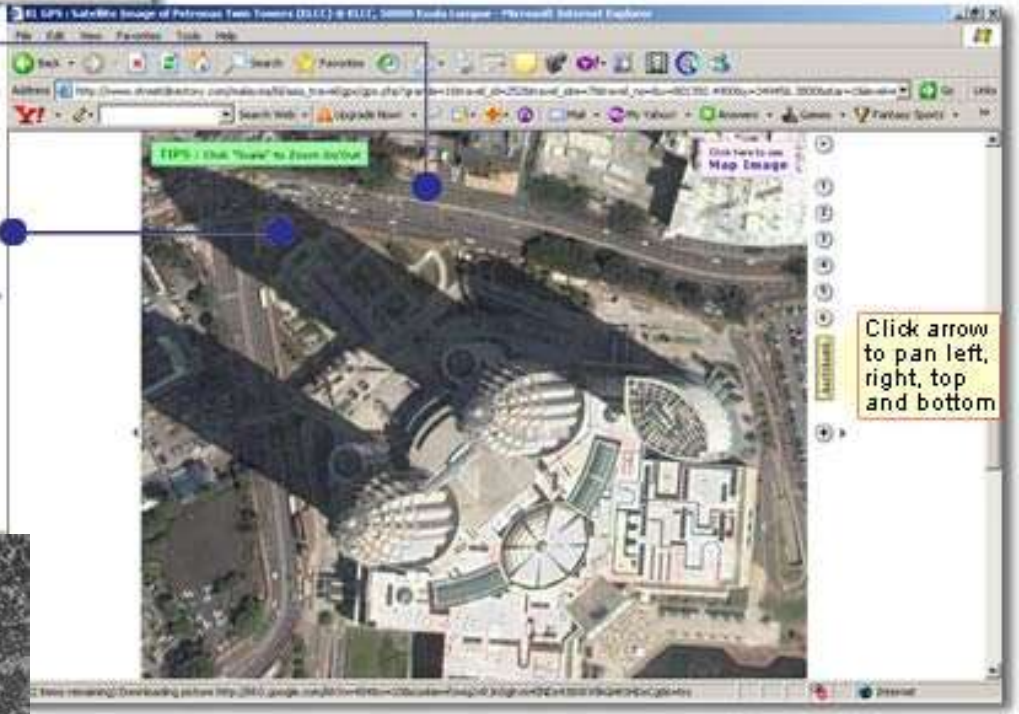
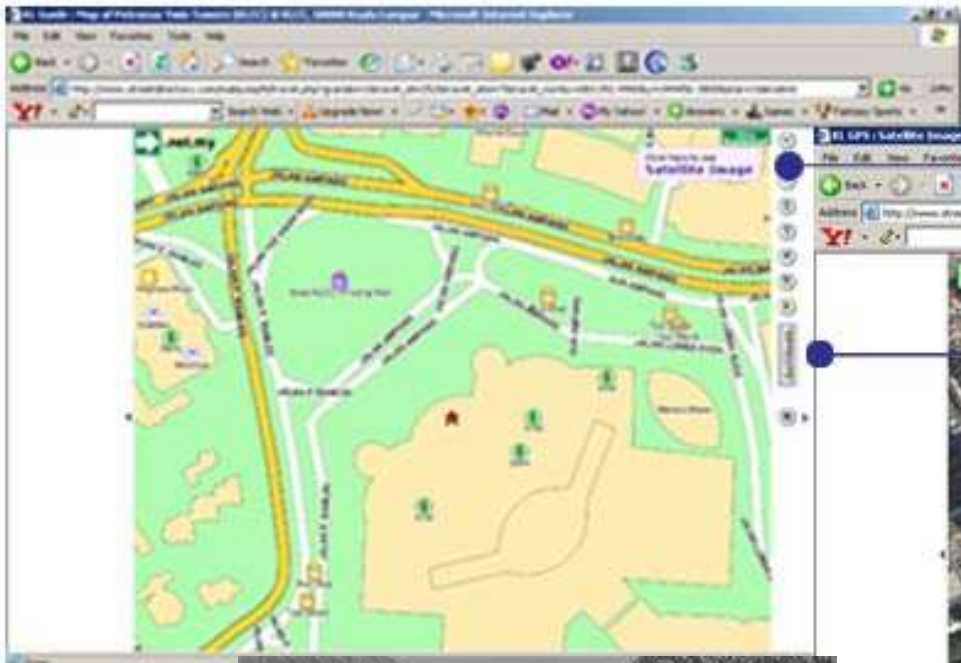
MAIN SUPPORTERS



PLATINUM SPONSORS



depicting geographical data



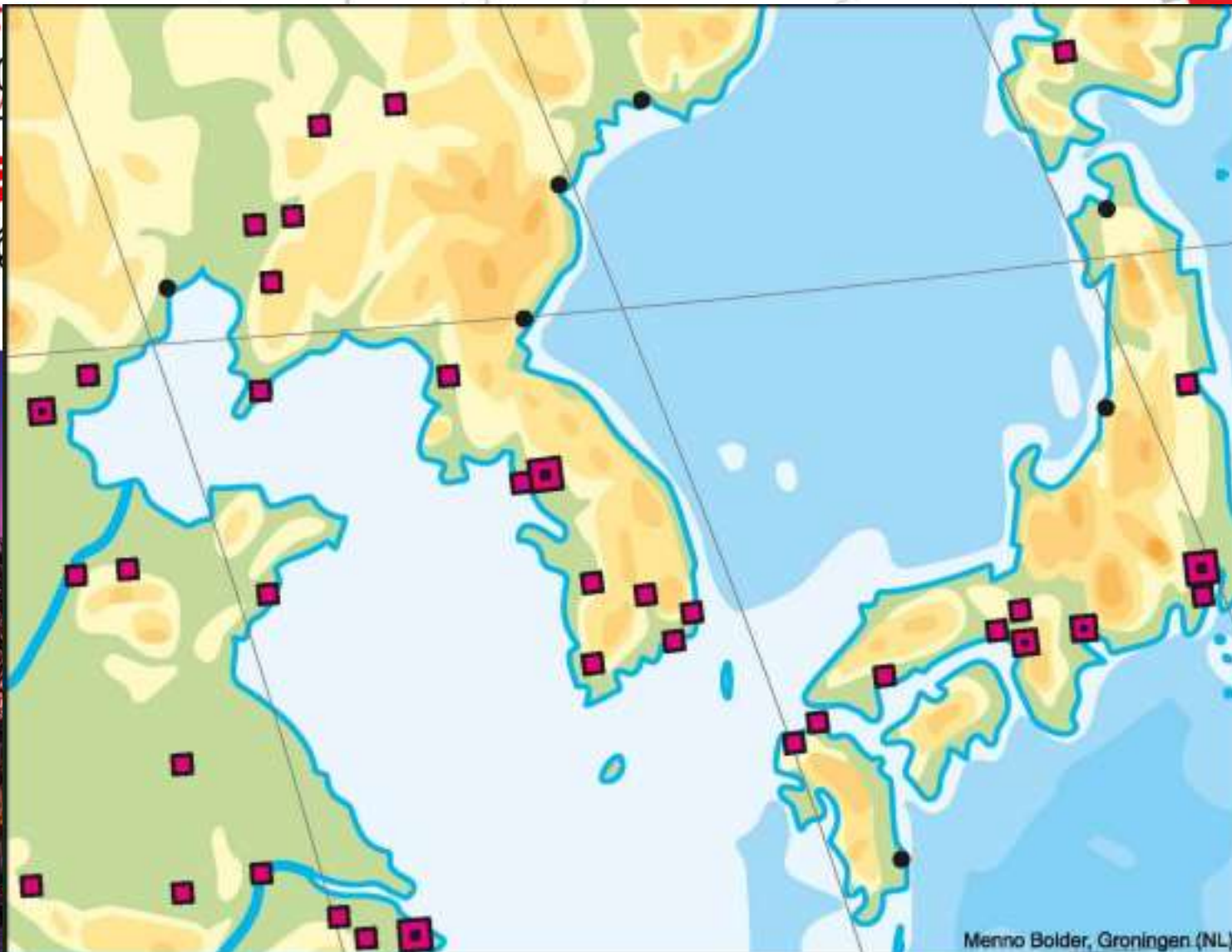
Tell history and heritage
**WORLD WHERE THE CONTINENTS CONNECT:
ING THE GEOSPATIAL MATURITY OF SOCIETIES**

ORGANISED BY



PLATINUM SPONSORS





Menno Bolder, Groningen (NL)

EMBRACING A GLOBAL WORLD WHERE THE CONTINENTS CONNECT:
ENHANCING THE GEOSPATIAL MATURITY OF SOCIETIES

ORGANISED BY



MAIN SUPPORTERS

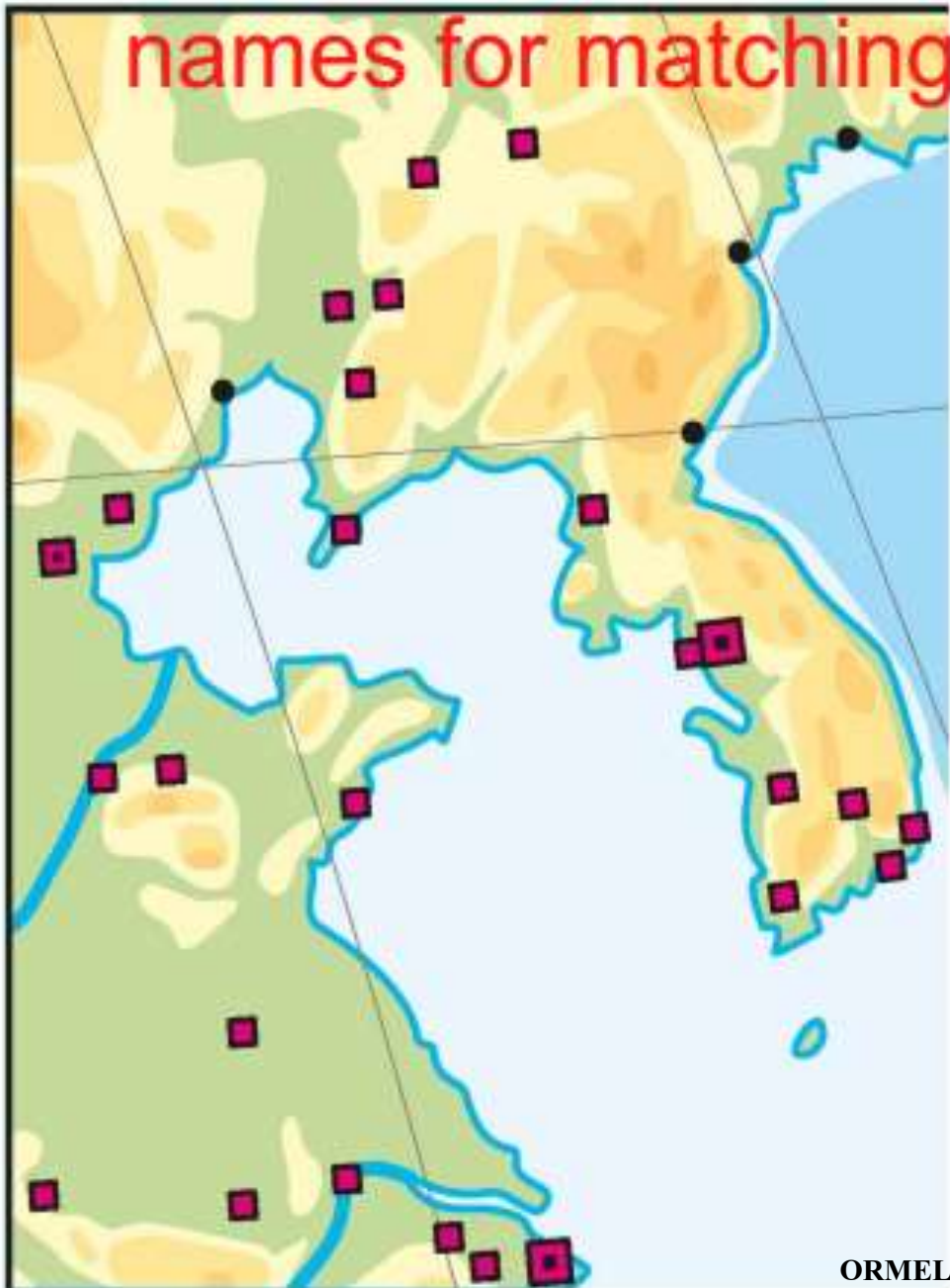


PLATINUM SPONSORS



The necessity of having geographical

names for matching geographical data



GIS operations

- Querying, buffer and overlay operations on the basis of named objects are possible on the basis of place name standardization

Congress 2018

The screenshot displays the TMM SmartMap v17.2 interface. On the left, a 'Layers' panel lists various map layers. The central map shows a street view of Kuala Lumpur with a context menu open over a point labeled 'Kampung Perliuk (Kuala Lumpur)'. The menu includes options like 'Query POIs...', 'Count POIs...', and 'Query properties...'. On the right, the 'Query POIs' dialog box is active, showing a tree view of categories and a list of selected items. The 'Selected Items' list includes various education-related categories. Below the dialog, a table shows the results of the query.

Category	Name	Location	Count
Category: POI; Education; Preschools			Count=1
Category: POI; Education; Primary Education; Chinese			Count=1
Category: POI; Education; Primary Education; National			Count=1
Category: POI; Education; Primary Education; Tamil			Count=1
SJK (T) Appar	4, Jalan Merpati, Kampung Bahru, 50480 Kuala Lumpur		
Category: POI; Education; Secondary Education; National, Te			
Category: POI; Education; Tertiary Education; Colleges			Count=1
Category: POI; Education; Tertiary Education; Universities, U			Count=1

At the bottom right, there is a banner for 'CONTINENTS CONNECT: DIVERSITY OF SOCIETIES' and logos for Leica Geosystems and Trimble.

FIG

STANDARDISATION OF PUBLIC GEOGRAPHICAL NAMES IN MALAYSIA

MALYSIAN NATIONAL COMMITTEE ON GEOGRAPHICAL NAMES (MNCGN)

➤ Established on 11
September 2002 by the
Malaysian Cabinet

➤ Responsible to
coordinate geographical
naming activities in
Malaysia

➤ Chaired by the Director
General of Surveying and
Mapping Malaysia



CONTINENTS CONNECT:
MATURITY OF SOCIETIES

ORGANISED BY

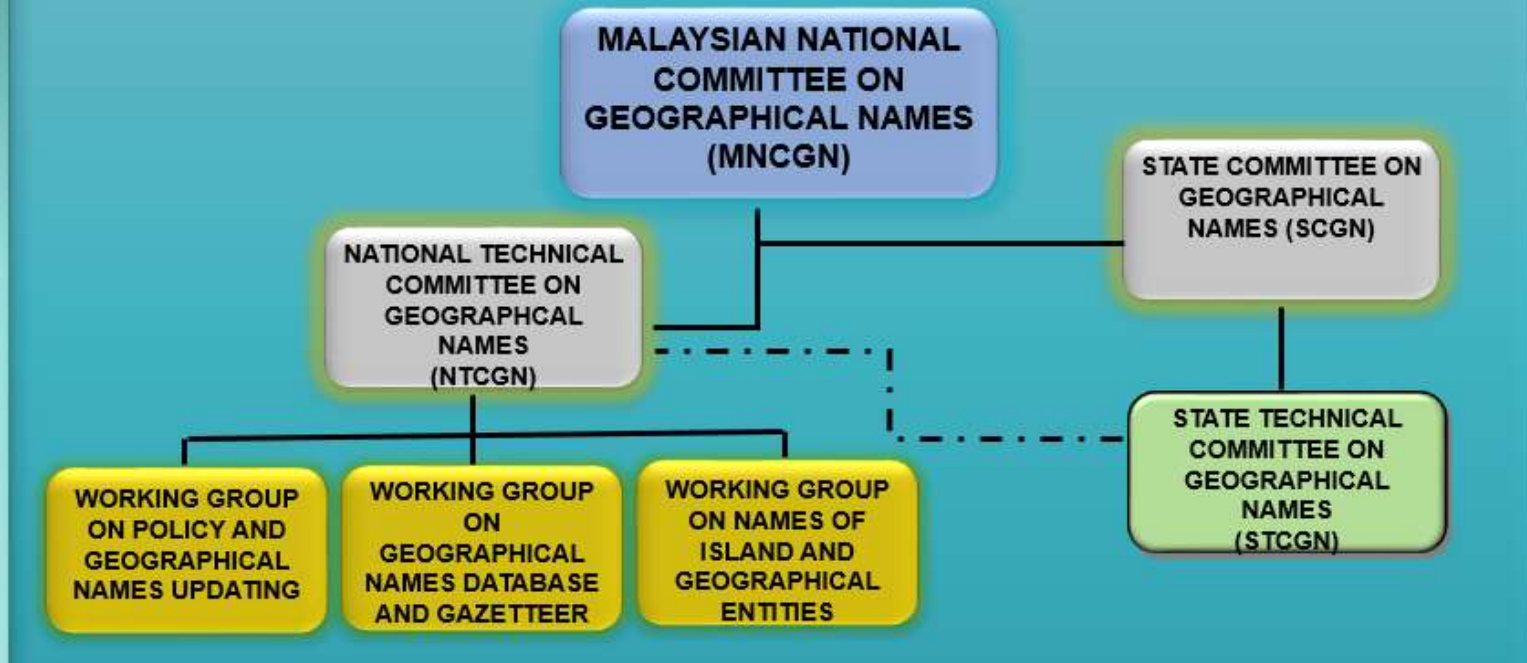


MAIN SUPPORTERS



PLATINUM SPONSORS





MNCGN RESPONSIBILITIES

- 1 Formulating national guidelines for the determination of geographical names
- 2 Developing the National Geographical Names Database and Gazetteer
- 3 Promoting the use of official names
- 4 Coordinating the input of national nomenclature activities with those at the international level





JKNG National Programs

Integration of geographical names into topographic map updating process

6-11 May 2018

ISTANBUL

2018



ORGANISED BY



VE VE SE
RAKANLIĞI

İçişleri Bakanlığı
Harita ve Kadastro Genel Müdürlüğü

THE SCIENCE OF WHERE

Geosystems

ITS CONNECT:
OF SOCIETIES



REFLECTING NATIONAL IDENTITY

Towns:

- Jesselton → Kota Kinabalu
- Maxwell Hill → Bukit Larut
- Port Swettenham → Pelabuhan Kelang





Geographical names

United Nations Statistics Division

World



UNGEGN – UN Geographical Experts on Geographic Names



UNGEGN Asia South East Division
(12 country members)