

FIG
2018
ISTANBUL

XXVI FIG Congress 2018

6-11 May 2018 ISTANBUL

EMBRACING OUR SMART WORLD WHERE THE CONTINENTS CONNECT:

ENHANCING THE GEOSPATIAL MATURITY OF SOCIETIES

Presented at the FIG Congress 2018,
May 6-11, 2018 in Istanbul, Turkey

Implementation of Fit For Purpose Land Administration Approaches in Nepal

10th May, 2018

Paula Dijkstra

Danilo Antonio

Raja Ram Chhatkuli

Eva-Maria Unger

Wondimagegm Tesfaye Beshah

Shristee Singh Shrestha

Christiaan Lemmen

ORGANISED BY



MAIN SUPPORTERS



PLATINUM SPONSORS





XXVI FIG Congress 2018

6-11 May 2018 ISTANBUL

EMBRACING OUR SMART WORLD WHERE THE CONTINENTS CONNECT:

ENHANCING THE GEOSPATIAL MATURITY OF SOCIETIES

Introduction



Nepal is mountainous country due to which one of the **major challenge of land is its topography**

ORGANISED BY



MAIN SUPPORTERS

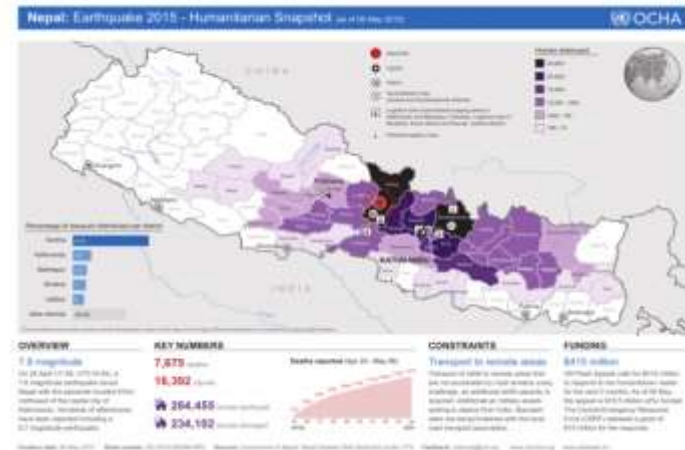


PLATINUM SPONSORS



Introduction

- New **constitution** in September 2015.
- Nepal was declared as a **federal democratic republic** and is going through **State restructuring**.
- Massive **earthquake** occurred in April, 2015 which added further complexity to the existing complex land governance in Nepal.
- Nearly **9000** people were killed; **9,00,000** houses completely and partially destroyed.
- For reconstruction and rehabilitation,
 - i). **Relocation** of households from the identified vulnerable sites,
 - ii). **Integrated settlement** planning and
 - iii). **Secure tenure** for **informal & non-formal** tenure holders.
- Then, a Fit-For-Purpose Land Administration was felt necessary.





XXVI FIG Congress 2018

6-11 May 2018 ISTANBUL
EMBRACING OUR SMART WORLD WHERE THE CONTINENTS CONNECT:
ENHANCING THE GEOSPATIAL MATURITY OF SOCIETIES

Key Interventions

Key Interventions



Objectives

- Identify key issues related to exiting land tenures and their security concerns
- Design land policy to protect land ownership and secured tenure, use, management, property rights and administration, and administrative structures.
- Design a Strategy to implement the land policy in the Country context

Results

- Research Report (English and Nepali)
- Revised Land Policy document (Nepali and English)
- FFPLA Country level Engagement Strategy document (English and Nepali)

ORGANISED BY



MAIN SUPPORTERS



PLATINUM SPONSORS



Key Interventions

FFPLA in Post EQ Land Management and Land Tenure Security



Integrated Settlement Planning (Jilu)



Identification, Verification and Recording of Informal Tenure (Phulappa)



Relocation from Vulnerable Sites
(Boshimpa/ Pani Pokhari; Bulungkhani)



ORGANISED BY



MAIN SUPPORTERS



PLATINUM SPONSORS



Partnership

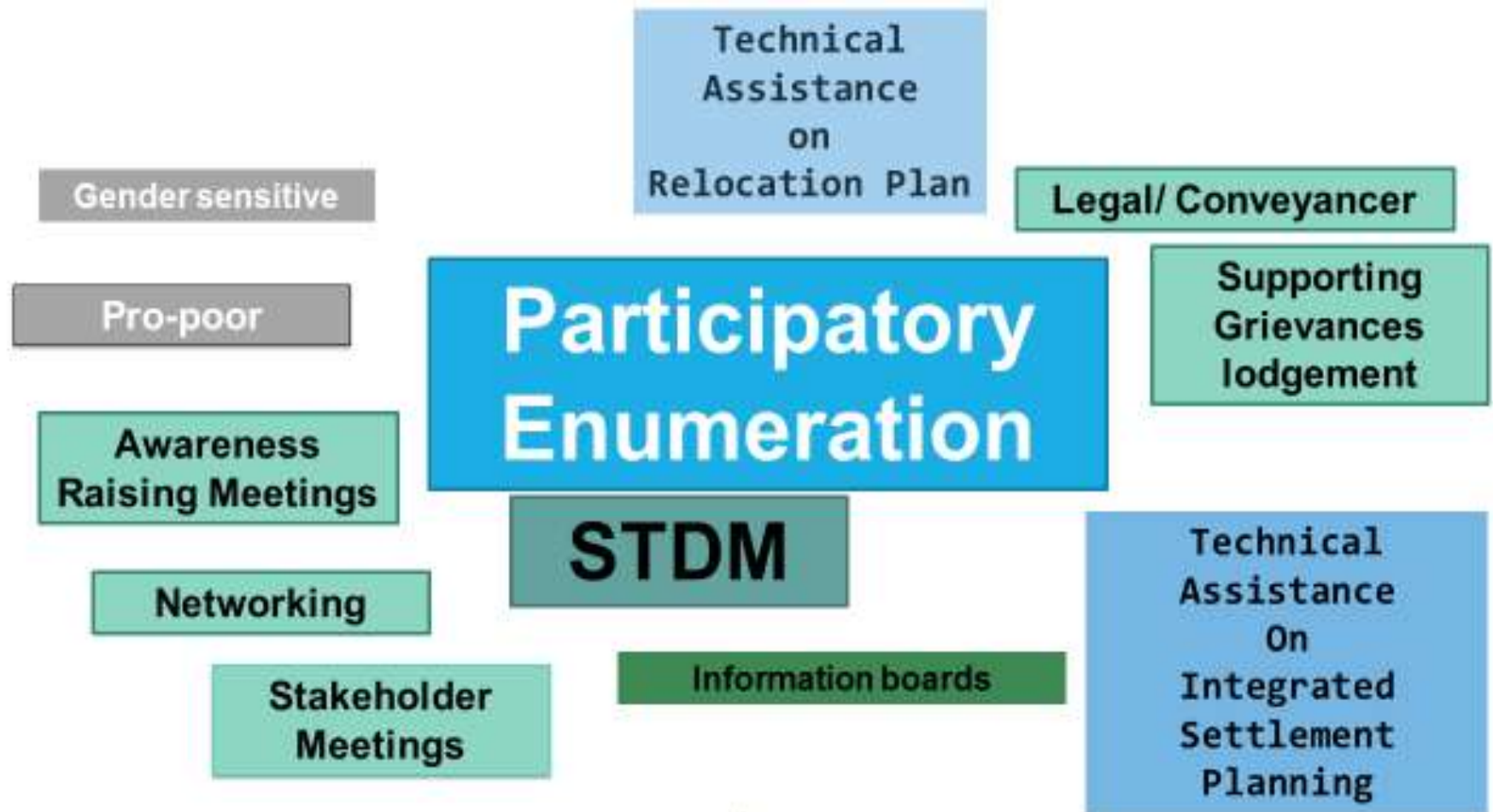
- **Ministry of Agriculture, Land Management & Cooperatives:** Lead land policy formulation
- **National Reconstruction Authority & its local office:** Coordination in post EQ disaster reconstruction, policy improvement, infrastructure development
- **Department of Survey and its local district office, Dolakha:** Test Implementation of FFPLA using low cost QGIS/ STDM based LIS system
- **Kadaster International:** Technical and Financial Support in implementing participatory enumeration & STDM in post EQ land & tenure management
- **Community Self Reliance Centre (CSRC):** Tenure typology, multi-stakeholder consultations in land policy development & designing FFPLA Strategy
- **Human Rights Awareness and Development Centre (HURADEC):** Data collection, local coordination and STDM analysis in post earthquake land and tenure management
- **Community members, ward leaders, Mayors, all government bodies,** especially the survey department, Caritas provided the information and gave their trust to Huradec



XXVI FIG Congress 2018

6-11 May 2018 ISTANBUL
EMBRACING OUR SMART WORLD WHERE THE CONTINENTS CONNECT:
ENHANCING THE GEOSPATIAL MATURITY OF SOCIETIES

Process



ORGANISED BY



MAIN SUPPORTERS



PLATINUM SPONSORS





XXVI FIG Congress 2018

6-11 May 2018 ISTANBUL

EMBRACING OUR SMART WORLD WHERE THE CONTINENTS CONNECT:

ENHANCING THE GEOSPATIAL MATURITY OF SOCIETIES

Panipokhari

PILOT 1

No HHQ



No FQ & Farms



Community Meeting



District Meeting



Jilu

PILOT 2

No HHQ



81

No FQ & Farms



0

Community Meeting



District Meeting



Done

Phulappa

PILOT 3

No HHQ



320

No FQ & Farms



1271

Community Meeting



Done

District Meeting



Done

Bulungkhani

PILOT 4

No HHQ



80

No FQ & Farms



87

Community Meeting



Done

District Meeting



Done

ORGANISED BY



MAIN SUPPORTERS



PLATINUM SPONSORS



FIG
2018
ISTANBUL

XXVI FIG Congress 2018

6-11 May 2018 ISTANBUL

EMBRACING OUR SMART WORLD WHERE THE CONTINENTS CONNECT:

ENHANCING THE GEOSPATIAL MATURITY OF SOCIETIES



ORGANISED BY



MAIN SUPPORTERS



PLATINUM SPONSORS



6-11 May 2018 ISTANBUL

EMBRACING OUR SMART WORLD WHERE THE CONTINENTS CONNECT:

ENHANCING THE GEOSPATIAL MATURITY OF SOCIETIES



DOLKHA HOUSEHOLD¹ ENUMERATION QUESTIONNAIRE

दोलखा घरधुरी गणना प्रस्नावली

Rev.17.07.2017

A. ENUMERATION गणना	
1. Questionnaire number* ¹ प्रस्नावली नम्बर	
2. Name of enumerator* (Last name, other names) सत्यांक संकलकको (थर, नाम)	
3. English date of enumeration (dd/mm/yyyy) * सत्यांक संकलन अंग्रेजी मिति (गते/ महिना/साल)	
4. GPS ID number जि पि एस आइडी नम्बर	
5. Camera ID number क्यामरा आइडी नम्बर	

B. RESPONDENT उत्तरदाता	
6. Name (Last Name, other names*) थर, नाम	
7. Mobile number मोबाइल नम्बर	
8. Gender* लिंग	<input type="checkbox"/> Female महिला (1) <input type="checkbox"/> Male पुरुष (2) <input type="checkbox"/> Other अन्य (3)

FIG
2018
ISTANBUL

XXVI FIG Congress 2018

6-11 May 2018 ISTANBUL

EMBRACING OUR SMART WORLD WHERE THE CONTINENTS CONNECT:

ENHANCING THE GEOSPATIAL MATURITY OF SOCIETIES



ORGANISED BY



MAIN SUPPORTERS



PLATINUM SPONSORS





UNINHABITAT



BOYUN HANEHOLUP İZLENİMLERİNE SORULAR
BOYUN HANEHOLUP İZLENİMLERİ
 BAŞLIK NO: 1001

A. DEMOGRAFİK VERİLER	
1. Evlilik durumu (evli / evli değil)	
2. Yaş (evli değil ise)	
3. Eğitim seviyesi (ilköğretim / ortaokul / lise / üniversite)	
4. İş durumu (işçi / memur / emekli / diğer)	
5. Gelir durumu (yüksek / orta / düşük)	

B. İZLENİMLERİ	
6. Harita kullanma deneyimi (evet / hayır)	
7. Harita kullanma amacı (bilgi edinme / araştırma / diğer)	
8. Harita türü (harita / dijital harita)	

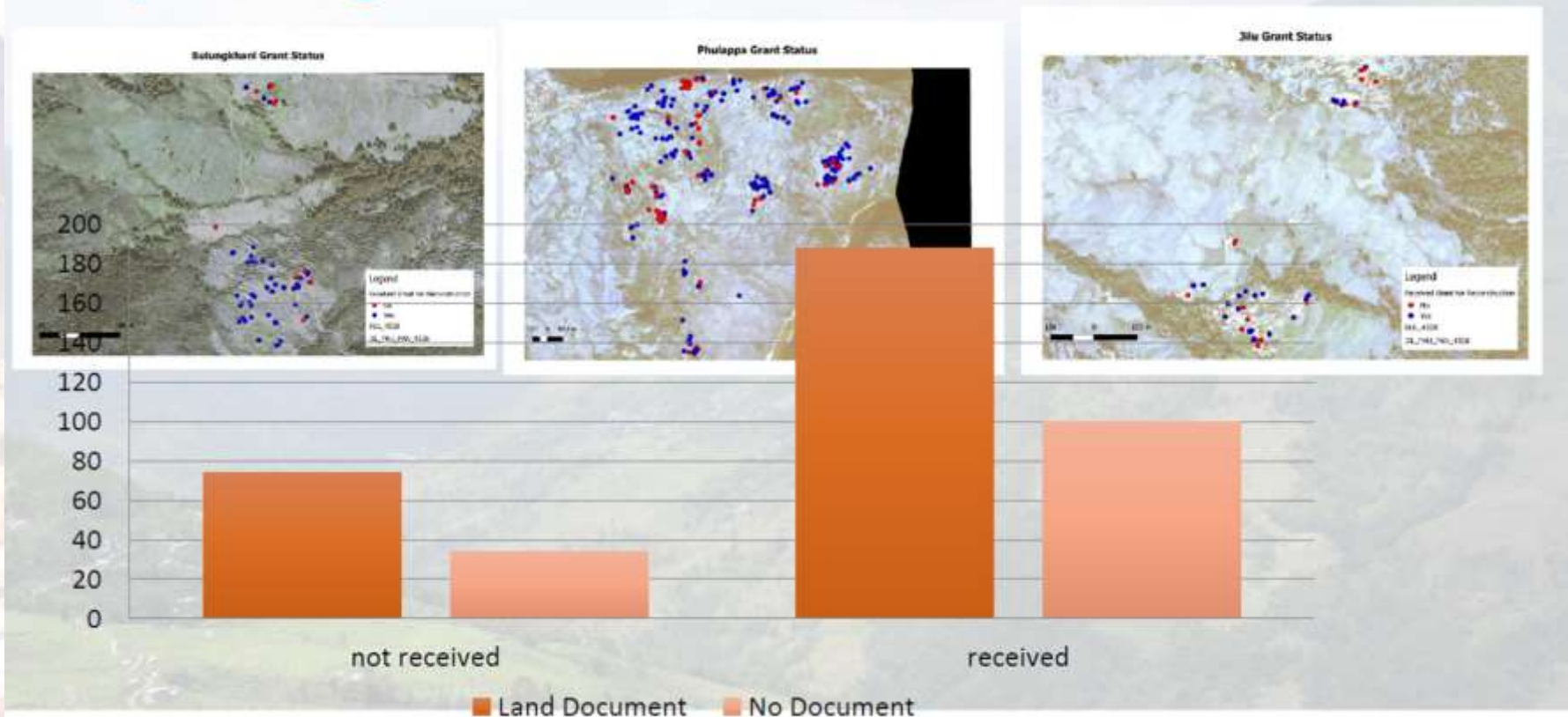


STDM



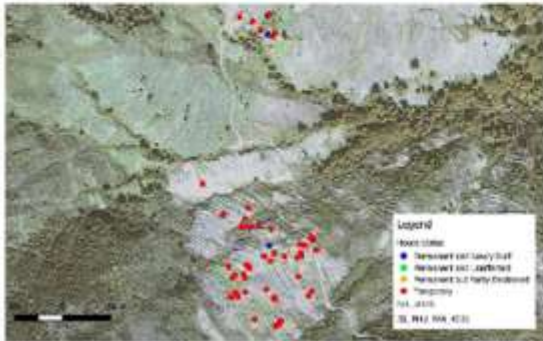
	HH	Persons	Farms
Pilot 1	80	190	155
Pilot 2	73	250	87

Key Findings 1: 1/3rd HH have not received Grant

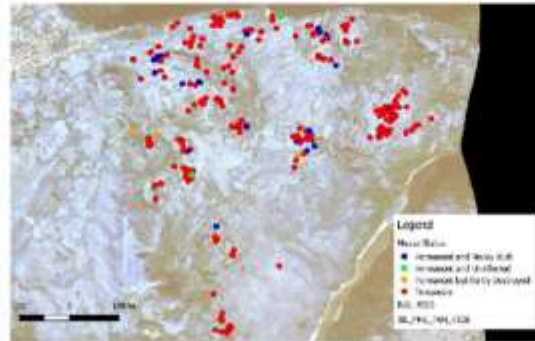


Key Findings 2: 1/3rd HH do not have land document

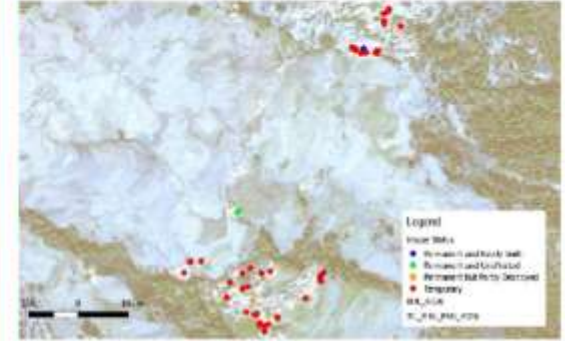
Bulungkhani House Status



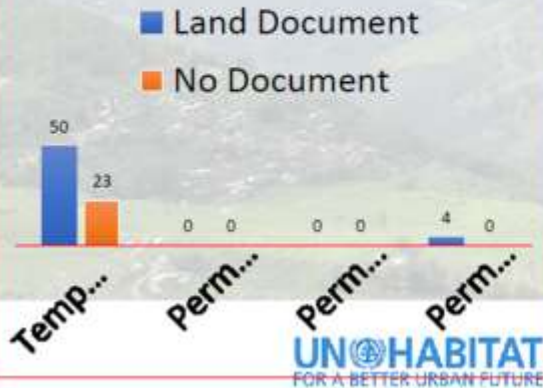
Phulappa House Status



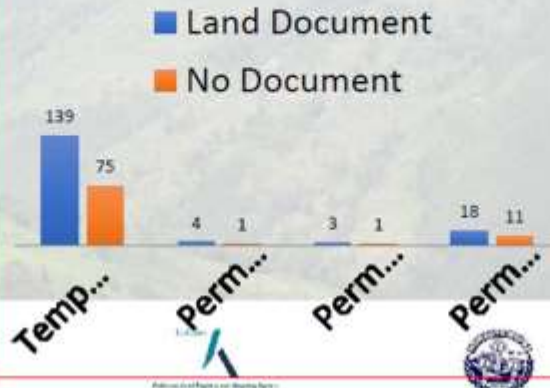
Jilu House Status



Bulungkhani - Current House



Phulappa - Current House



Jilu - Current House



Key Achievement

- **NRA recognized and owned the achievements**
 - Relocation Plan of Boshimpa/ Panipokhari approved
 - Integrated Settlement Plan of Jilu approved
 - Relocation Plan of Bulungkhani under consideration
- **Land and Tenure status for informal tenure holders in Phulappa identified**
 - The government knows where the people are, the people know where the government is and what the government is doing for them
- **Participatory Enumeration process for Formal and Informal tenures using satellite imagery and hand held GPS developed**
 - Customized STDM tool developed for houses and farm information
 - Capacity Development (Training, Workshop, Seminar, Symposium, Handbooks)
- **National dialogue platform on land issues activated; Partnership and Mutual trust between different land stakeholders created**





XXVI FIG Congress 2018

6-11 May 2018 ISTANBUL

EMBRACING OUR SMART WORLD WHERE THE CONTINENTS CONNECT:

ENHANCING THE GEOSPATIAL MATURITY OF SOCIETIES

Dhanyabad !

Thank you !

ORGANISED BY



MAIN SUPPORTERS



PLATINUM SPONSORS

