

FIG

FIG WORKING WEEK 2017

Helsinki Finland

29 May - 2 June 2017

Presented at the FIG Working Week 2017,
May 29 - June 2, 2017 in Helsinki, Finland

Semi-automatic classification of power lines by using airborne LiDAR

Dragana POPOVIĆ, Vladimir PAJIĆ,
Dušan JOVANOVIĆ, Filip SABO and
Jovana RADOVIĆ

University of Novi Sad
Faculty of Technical Sciences, Serbia

Surveying the world of tomorrow -
From digitalisation to augmented reality

Organised by



Platinum Sponsors:



esri



Trimble

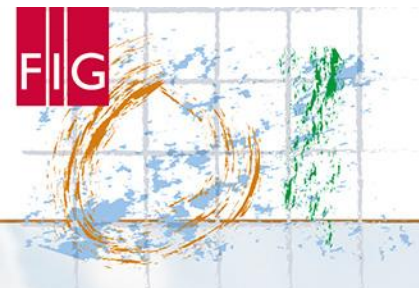


FIG WORKING WEEK 2017

Surveying the world of tomorrow -

Helsinki Finland 29 May - 2 June 2017

From digitalisation to augmented reality

Introduction

- Mapping of power lines for cadastre use
- LiDAR data
- Fusion of different methods for data extraction
- Problems with methods
- Obtained valid and accurate data



Platinum Sponsors:



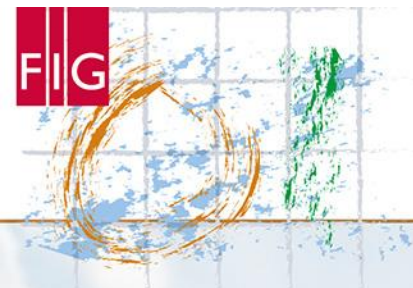


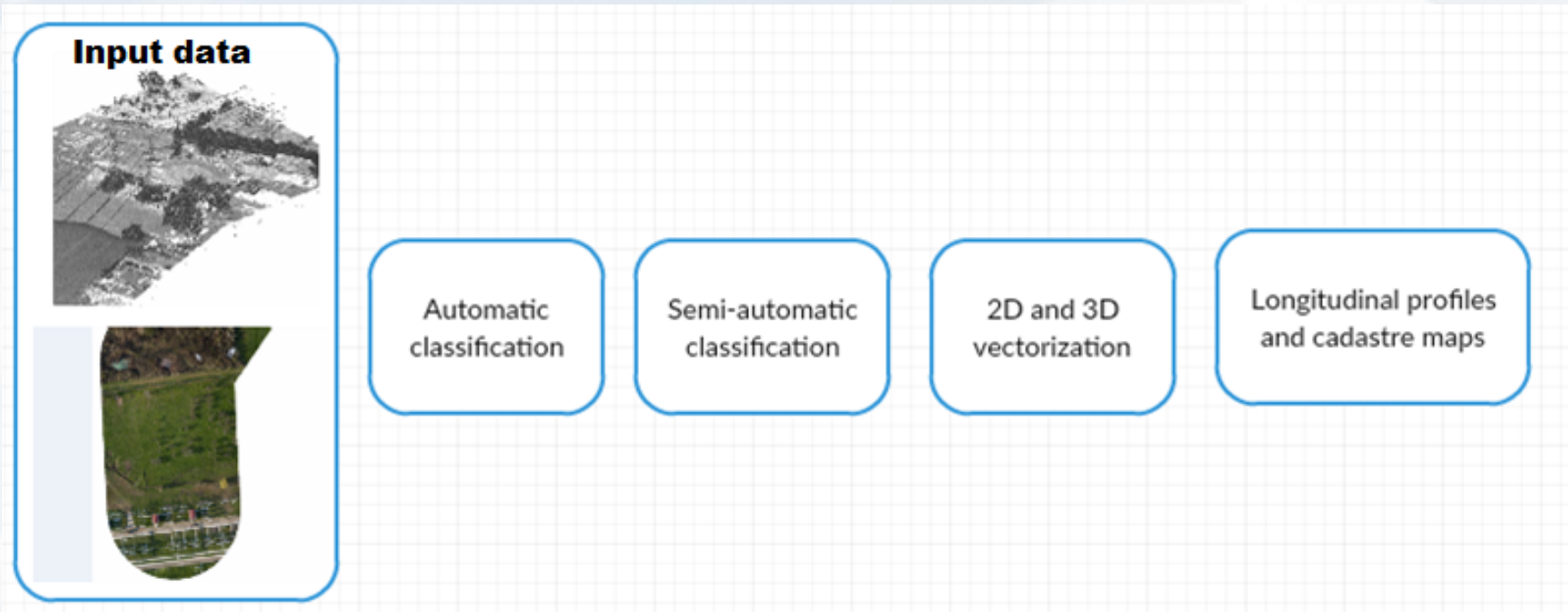
FIG WORKING WEEK 2017

Surveying the world of tomorrow -

Helsinki Finland 29 May - 2 June 2017

From digitalisation to augmented reality

Workflow



Platinum Sponsors:



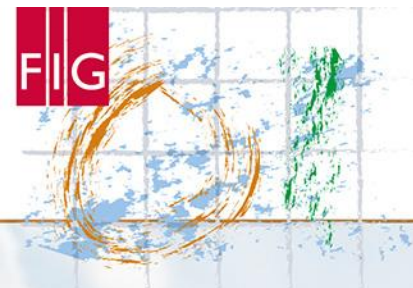


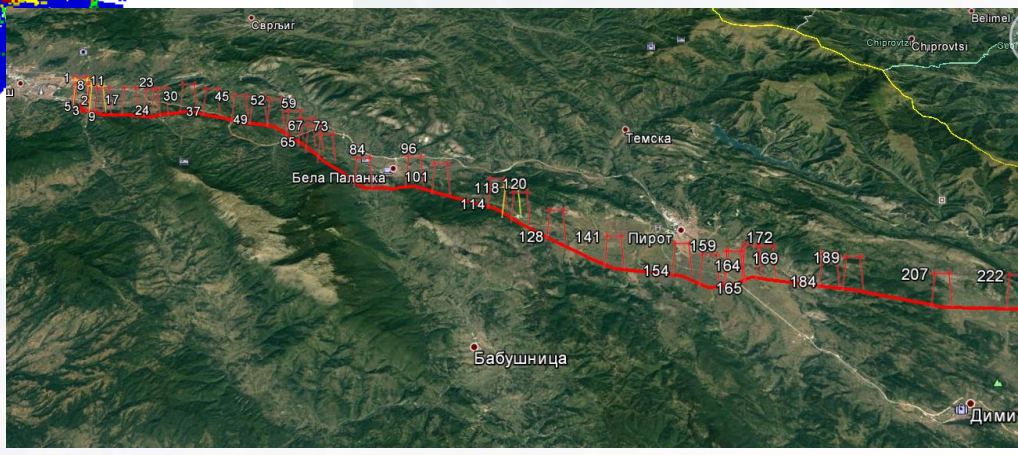
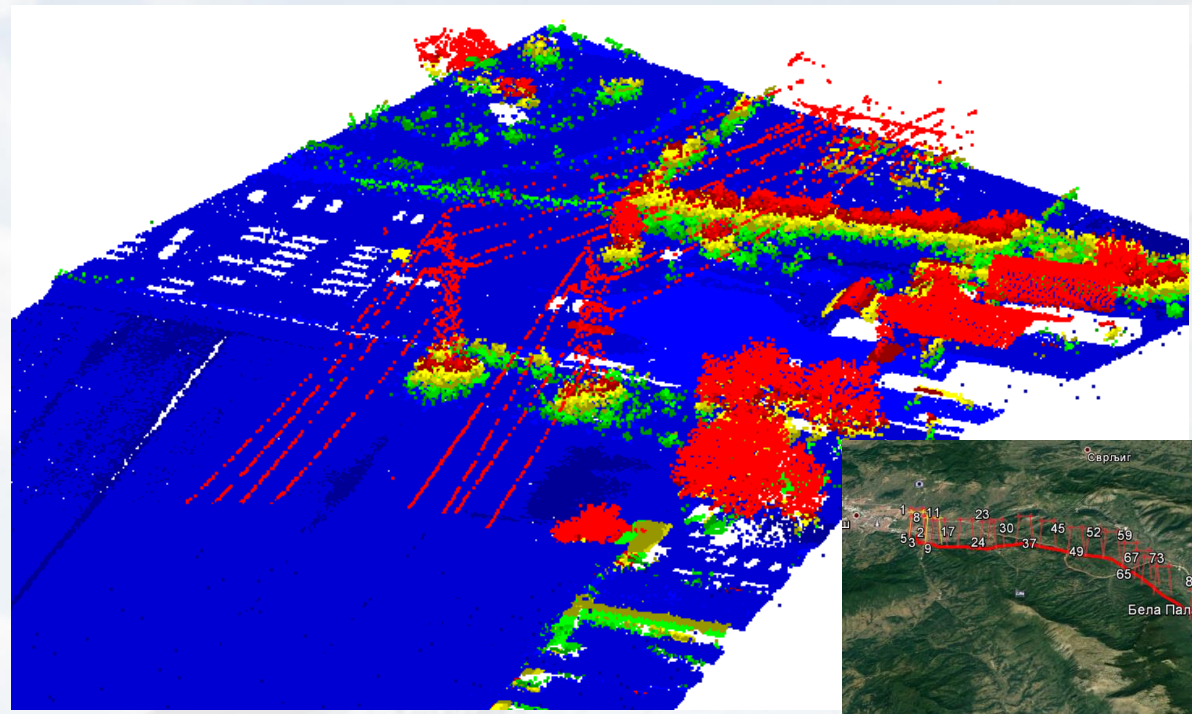
FIG WORKING WEEK 2017

Surveying the world of tomorrow -

Helsinki Finland 29 May - 2 June 2017

From digitalisation to augmented reality

Used data



Platinum Sponsors:



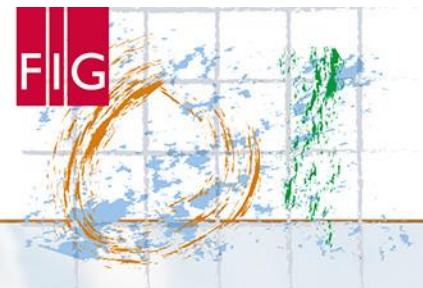


FIG WORKING WEEK 2017

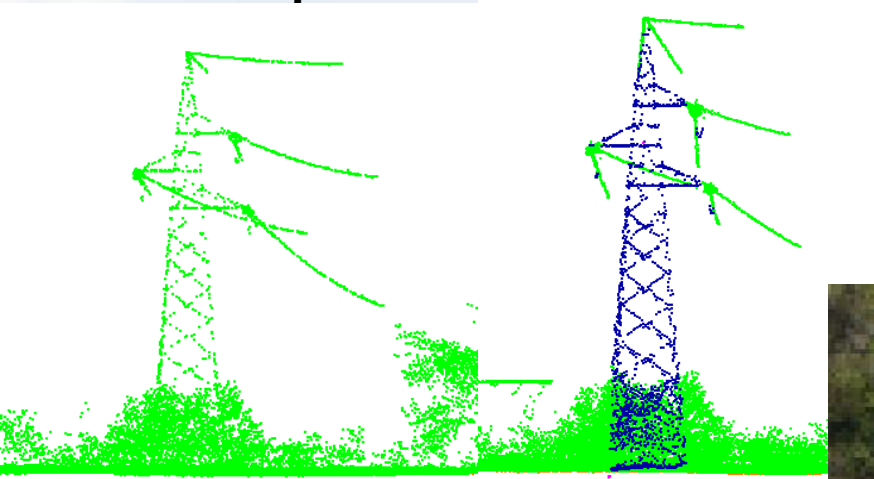
Surveying the world of tomorrow -

Helsinki Finland 29 May - 2 June 2017

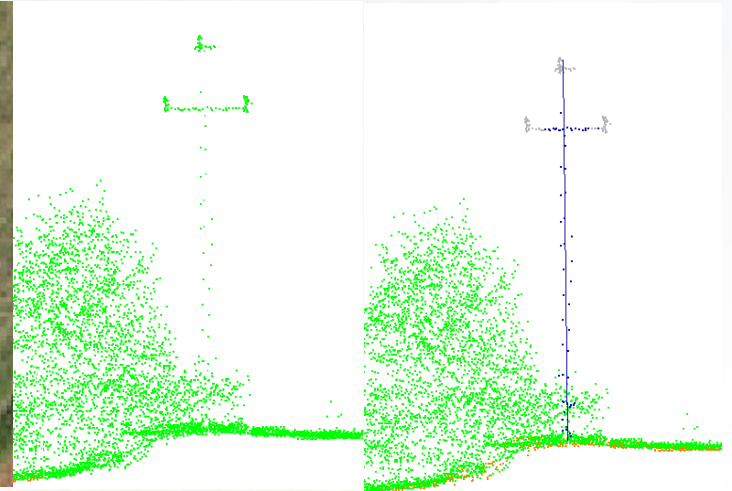
From digitalisation to augmented reality

Misclassified points

misclassified points of pole



points close to vegetation that belongs to pole



Platinum Sponsors:



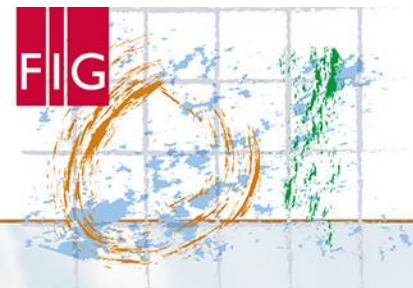


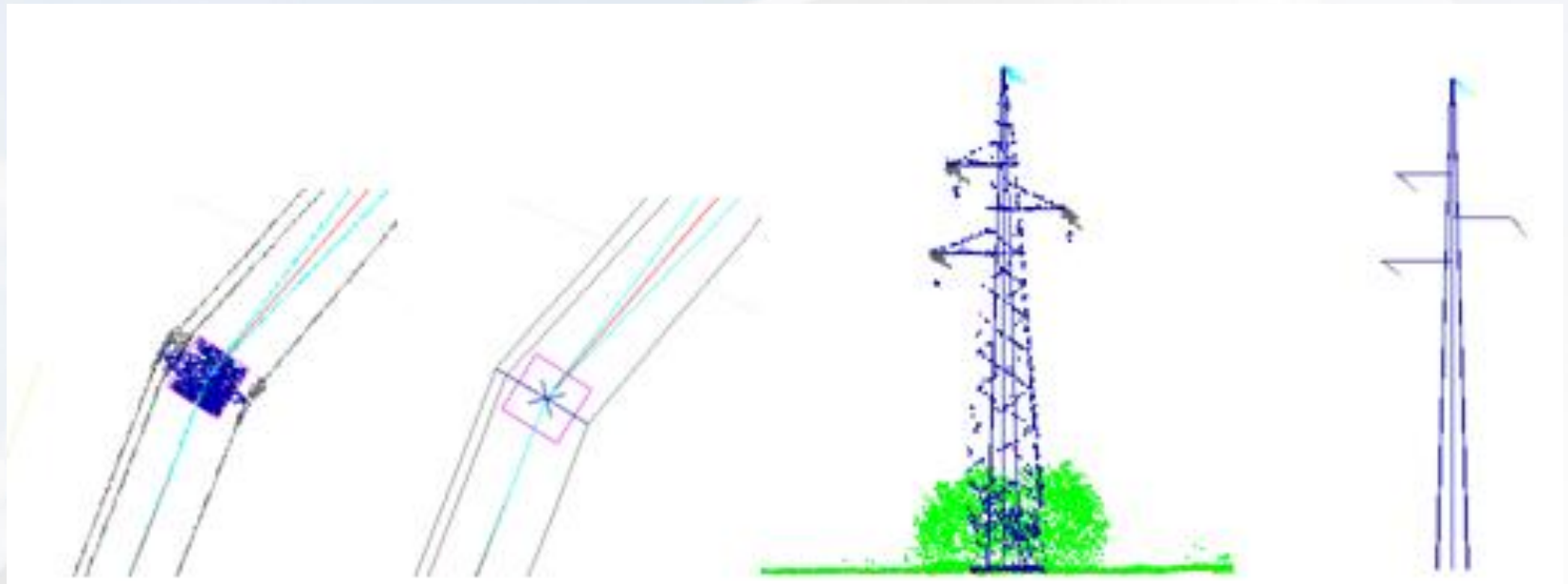
FIG WORKING WEEK 2017

Surveying the world of tomorrow -

Helsinki Finland 29 May - 2 June 2017

From digitalisation to augmented reality

2D and 3D Vectorization of poles



Platinum Sponsors:



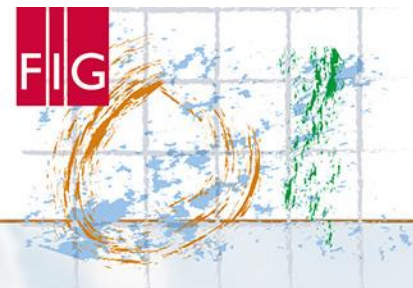


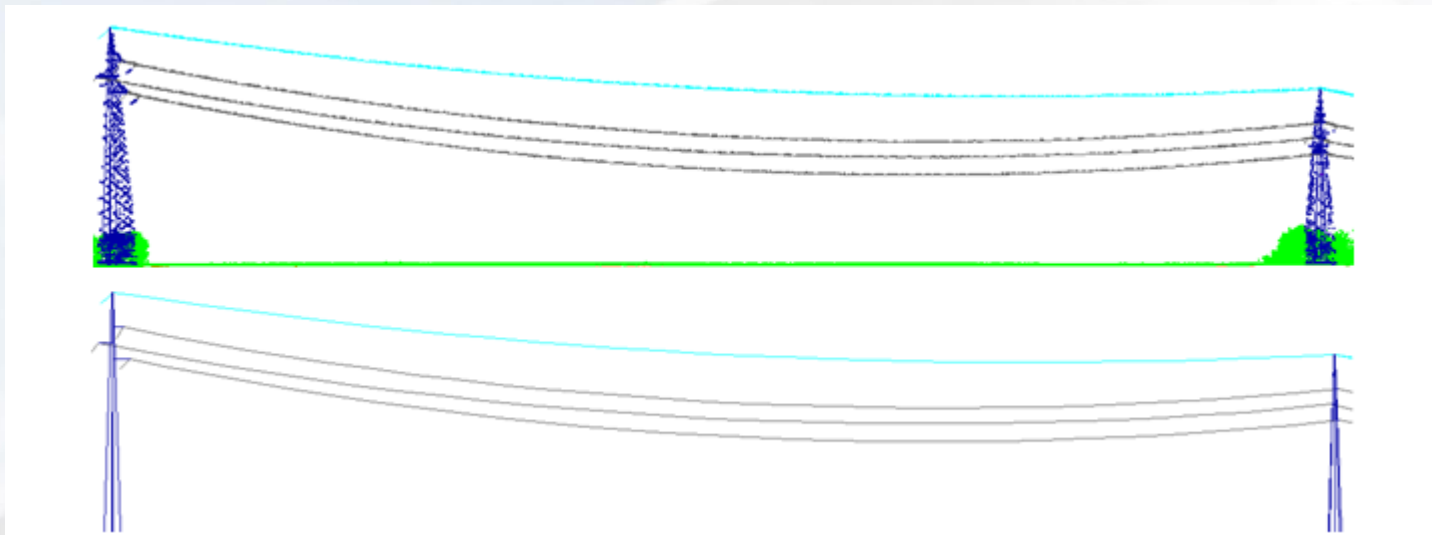
FIG WORKING WEEK 2017

Surveying the world of tomorrow -

Helsinki Finland 29 May - 2 June 2017

From digitalisation to augmented reality

3D Vectorization of poles and wires



Platinum Sponsors:



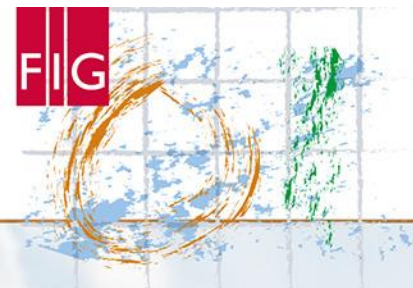


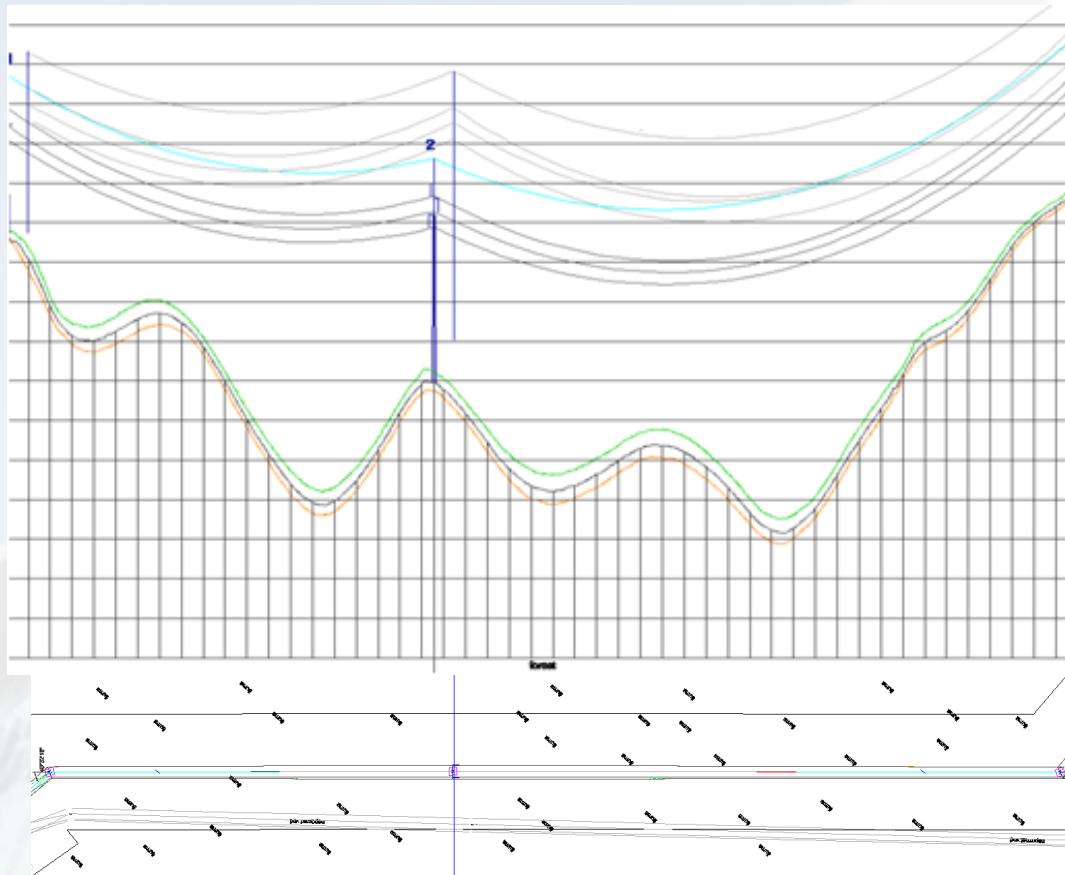
FIG WORKING WEEK 2017

Surveying the world of tomorrow -

Helsinki Finland 29 May - 2 June 2017

From digitalisation to augmented reality

Longitudinal profile and cadastre map



Platinum Sponsors:



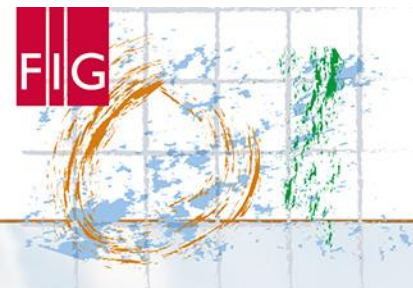


FIG WORKING WEEK 2017

Surveying the world of tomorrow -

Helsinki Finland 29 May - 2 June 2017

From digitalisation to augmented reality

Conclusion

- Valid informations for cadastre
- Precise i accurate data used in Electricity distribution infrastructure

Future work:

- Will be focused on finding the ideal solution for semi-automatic classification and vectorization.
- Solution should be basic automatic classification that would classify much more point classes that automatic classification could not classify.



Platinum Sponsors:





FIG WORKING WEEK 2017

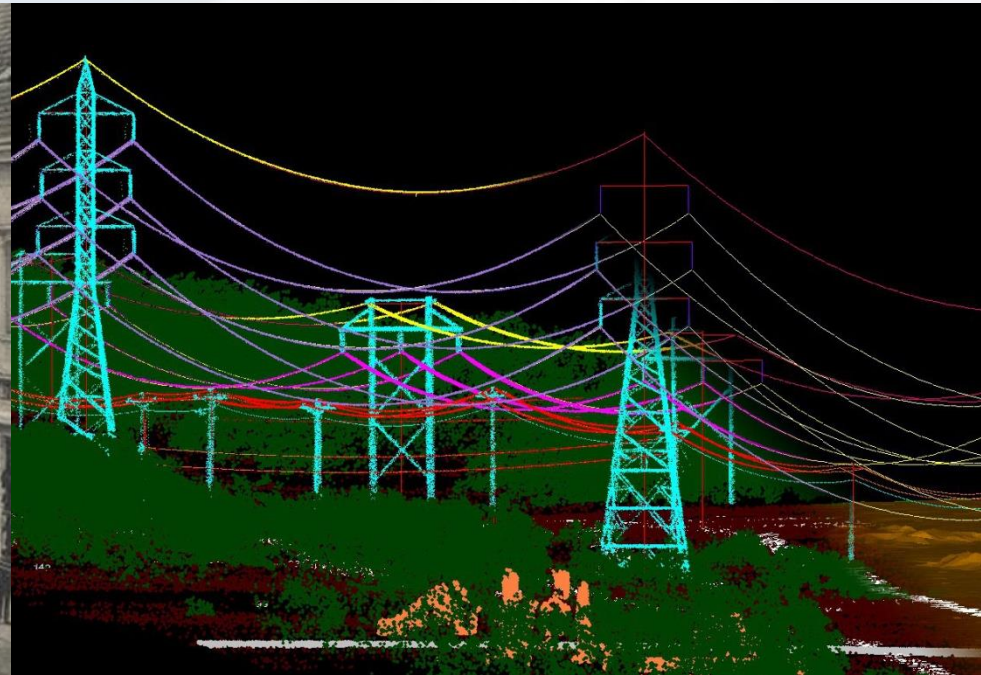
Surveying the world of tomorrow -

Helsinki Finland 29 May - 2 June 2017

From digitalisation to augmented reality

Past

Future is here



Platinum Sponsors:

