

*Presented at the FIG Working Week 2016,
May 2-6, 2016 in Christchurch, New Zealand*

As simple as possible for as Many as Possible, to Access, Understand and Use of Spatial Data

Anders Sandin
Director
Lantmäteriet

The Swedish Mapping, cadastral and land registration authority



FIG Working Week 2016

CHRISTCHURCH, NEW ZEALAND 2-6 MAY 2016

Recovery

from disaster

Organised by



Platinum Partners



Diamond Partner





Outline

1. Background
2. State of play
3. Lessons learned, key factors of success
4. Next step



Background (I)

Lantmäteriet is the National coordinator of Spatial data (Geodata) in Sweden and have the responsibility for the;

- **Cooperation and collaboration**
- **Production**
- **Dissemination**
- **Development**

INSPIRE as a driving force to built the Spatial Data Infrastructure





Background (II)

Why an Spatial Data Infrastructure?

We are under constant threat of:

- Climate change
- Disasters
- Human, animal and plant disease
- Extinction of species
- Scarcity of resources (water, food, fuel)





State of play (I)



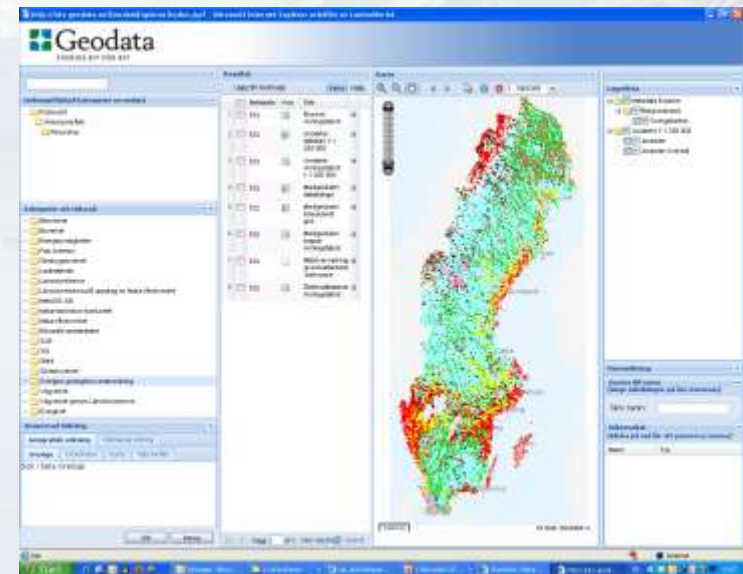
- Cooperation
- Competence
- Portal (National Discovery Service)
- Geodata (Information)
- Services
- Legal framework
- Metadata
- Standards



State of play (II)

Outcomes and what we achieved in our coordination task:

- ❑ Geodata strategy for Sweden
- ❑ Geodata portal (National Discovery Service)
- ❑ Geodata cooperation
- ❑ Education & Research





Lessons learned, key factors of success

- Politicians and policy makers commitment
- Management
- Communication
- Listen & Response
- Engage & Involve
- Good examples





Next step

A new Geodata strategy will be released, June 15 for the period 2016-2020

- Geospatial information free of charge**
- Geospatial information easy accesable**
- Geospatial information easy to use**
- Developed cooperation & collaboration**

Vision Sweden has a national infrastructure for geodata (SDI)

- Promote innovation and growth**
- Enables digital processes "Digital first"**
- Contributes to the citizens to have a good, safe and sustainable environment**



FIG Working Week 2016

CHRISTCHURCH, NEW ZEALAND 2-6 MAY 2016

Recovery

from disaster

Thank you for your attention!



Platinum Partners:



Diamond Partner

