

Presented at the FIG Working Week 2016,
May 2-6, 2016 in Christchurch, New Zealand

POINTSHARE.ORG

An SDI for new technologies in Disaster Management

Plumline 1:100, Azimuth 249
0:00 1:24.5 2:50.0 3:77.5 5:00.0



FIG Working Week 2016

CHRISTCHURCH, NEW ZEALAND 2-6 MAY 2016

Recovery

from disaster

Organised by



Platinum Partners



Diamond Partner





FIG Working Week 2016

CHRISTCHURCH, NEW ZEALAND 2-6 MAY 2016

Recovery

from disaster

There are multiple efforts in sharing data for Disaster Management

- ADMP



Infrastructure for Spatial Information in Europe



In Colombia.....

- CDMPS



- CDMP(Colombia Disaster Management Platform)
- Colombian Infrastructure of Spatial Data



Global Platform for Disaster Risk Reduction (UNISDR)





FIG Working Week 2016

CHRISTCHURCH, NEW ZEALAND 2-6 MAY 2016

Recovery

from disaster

However limited opportunities are today to share data between practitioners and academia

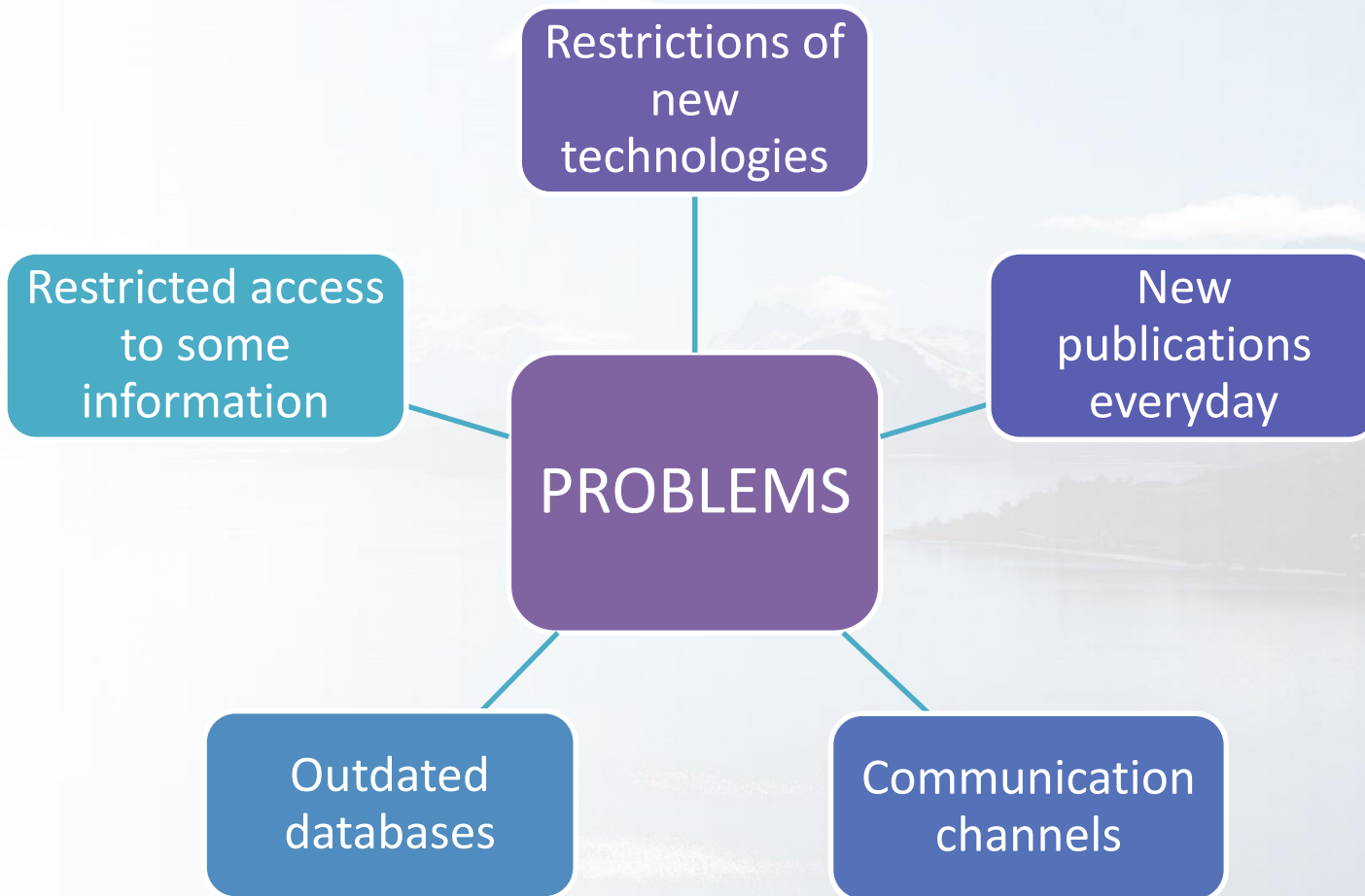




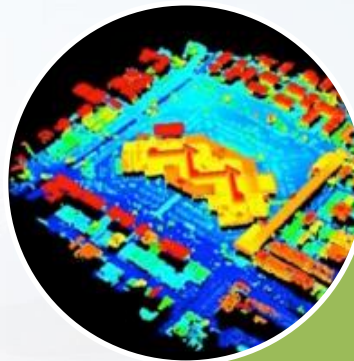
FIG Working Week 2016

CHRISTCHURCH, NEW ZEALAND 2-6 MAY 2016

Recovery

from disaster

Drones have great capabilities but access to sample data is difficult



Sharing data (.las and .xyz) has the potential to help researchers around the world



Limitations are different in each country



FIG Working Week 2016

CHRISTCHURCH, NEW ZEALAND 2-6 MAY 2016

Recovery

from disaster

FIG Commission 7 working group 7.2 have been working in improving knowledge for Disaster Management

“Ensuring the Rapid Response to Change Ensuring the Surveyor of Tomorrow”

What is FIG

International Federation of Surveyors



What is the 7th Commission

Cadastre and Land Management



What is de 7.2 Group

Climate Change, Disaster Risk Management and Land Administration



Platinum Partners:



Diamond Partner





FIG Working Week 2016

CHRISTCHURCH, NEW ZEALAND 2-6 MAY 2016

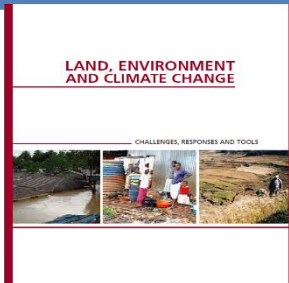
Recovery

from disaster

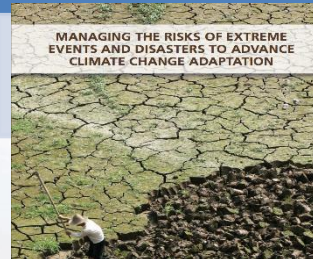
Publications in Point Share

• Climate Change and Adaptation

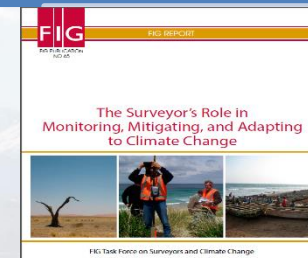
Land, Environment and Climate Change



Managing the Risks of Extreme Events and Disasters to Advance Climate Change Adaptation

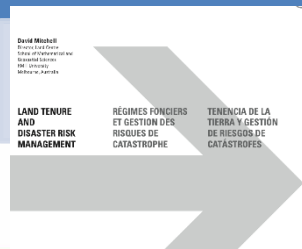


Surveyor's Role in monitoring, mitigation and adapting to Climate Change

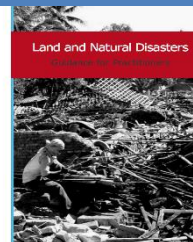


• Disaster Risk Management

Land Tenure and Disaster Risk Management



Land and Natural Disasters: Guidance for Practitioner



Microfinance and Disaster Risk Management Experiences and Lessons Learned

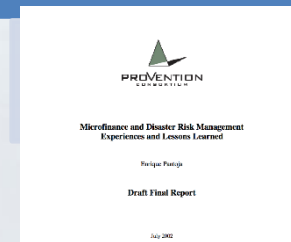




FIG Working Week 2016

CHRISTCHURCH, NEW ZEALAND 2-6 MAY 2016

Recovery

from disaster

Pointshare is an holistic approach to knowledge and data share for disaster management



- Sharing data, cloud points, orthophotos



- Publications and general information



- E-Learning material and social networks



FIG Working Week 2016

CHRISTCHURCH, NEW ZEALAND 2-6 MAY 2016

Recovery

from disaster

Knowledge based sharing is about making key publications known by the public domain

The screenshot shows the pointshare.org website. At the top left is the FIG logo and the text "Department of Civil and Environmental Engineering SUR Investigation Group". The navigation menu includes "Home", "Who are we?", "Publications" (highlighted with a red box), "Point Data Share", "News", "PS Blogs", and "Follow Us". A dropdown menu for "Publications" lists "Climate Change Adaptation and Mitigation" and "Disaster Risk Management". The main content area features a 3D topographic map with colored overlays. Below the map is a video player titled "What is this?" with the subtitle "Point Share For All". To the right of the video are "Social links" (Facebook, Twitter, YouTube) and a "Gallery" section. The browser address bar shows "pointshare.org".



Platinum Partners:



Diamond Partner





FIG Working Week 2016

CHRISTCHURCH, NEW ZEALAND 2-6 MAY 2016

Recovery

from disaster

Data sharing is based on the concept of open access and support

← → ↻ ↩ xplorer.procalculo.com

Welcome Map List WebView Catalog Control Panel

ADVANCED Sign Out Settings Help

STATUS GXP Xplorer® Search... Search

Last Sign-In: 10/08 9:41:22 AM CART 0 items

Center Map To... Go

Search By

Search Results

Saved Searches

Catalogs

4983 total results

Show 500 Sort By: None

04° 36' 18.640"N 74° 07' 38.190"W



Platinum Partners:



Diamond Partner





FIG Working Week 2016

CHRISTCHURCH, NEW ZEALAND 2-6 MAY 2016

Recovery

from disaster

Selection of Data Types

The screenshot displays the GXP Xplorer web application interface. A central modal window titled "Select Data Types" is open, showing a hierarchical list of data categories with checkboxes for selection. The categories and their sub-items are:

- ALL
 - IMAGERY**
 - NITF
 - TFRD
 - DPPDB
 - TIFF
 - MrSID
 - ECW
 - IMG
 - JPEG
 - GIF
 - BMP
 - PNG
 - SOCKET GXP Support File
 - AMSD
 - Portable Document Format (PDF)
 - MS Word Document
 - MS Excel Document
 - MS Powerpoint Document
 - Hypertext Markup Language (HTML)
 - Extensible Markup Language (XML)
 - ASCII Text Document
 - Rich Text Document (RTF)
 - CIB
 - DigitalGlobe Historical Images
 - DOCUMENTS**
 - Portable Document Format (PDF)
 - MS Word Document
 - MS Excel Document
 - MS Powerpoint Document
 - Hypertext Markup Language (HTML)
 - Extensible Markup Language (XML)
 - ASCII Text Document
 - Rich Text Document (RTF)
 - MAPS AND CHARTS**
 - Global Navigation Chart (1:5M)
 - Jet Navigation Chart (1:2M)
 - VFR
 - Operational Navigation Chart (1:1M)
 - High Flying Chart (1:1M)
 - Low Flying Chart (1:500k)
 - Visual Navigation Charts (1:500k)
 - Tactical Pilotage Chart (1:500k)
 - Joint Operations Graphic
 - Operational Planning Graphic (1:250k)
 - Transit Flying Chart (1:250k)
 - Series 200 Air Target Chart (1:200k)
 - Helicopter Route Chart (1:125k)
 - Topographic Line Map (various)
 - Riverine Map (1:50K)
 - Harbor and Approach Charts (various)
 - Coastal Charts (various)
 - Naval Range Operating Area Chart (various)
 - City Graphics (various)
 - Combat Charts (various)
 - Military Installation Maps (1:50k)
 - Miscellaneous Maps & Charts (various)
 - VIDEO**
 - MPEG
 - AAF
 - Other
 - VECTORS**
 - Shapefiles
 - Interim Terrain Data
 - KML/KMZ
 - Track
 - VPF
 - TERRAIN**
 - DTED
 - HRE
 - GeoTiff
 - GXP
 - LIDAR
 - TERCOM
 - WMED
 - WEB MEDIA**
 - News
 - Tweets
 - Blogs
 - Reports
 - OTHER**
 - *.xyz



Platinum Partners:



Diamond Partner





FIG Working Week 2016

CHRISTCHURCH, NEW ZEALAND 2-6 MAY 2016

Recovery

from disaster

Viewing Images and Metadata

Welcome [Map](#) [List](#) [WebView](#) [Catalog Control Panel](#) ADVANCED

STATUS Search... Last Sign-In: 10/08 10:4

Center Map To...

Search By

Search Results

Saved Searches

Catalogs

Time Slider

Product Gallery

IMG_1215.JPG

Begin Date	2014-04-19T09:49:24.000Z
Date Collected	2014-04-19T09:49:24.000Z
End Date	2014-04-19T09:49:24.000Z
Filename	IMG_1215.JPG
Mean GSD	2.498454648123989
NBANDS	3
NBPP	8
NCOLS	4608
NROWS	3456
File Path	H:\Data - Uruguay\Bogota\Bogota\...

1 / 3

4983 total results

< 1 2 3 ... 10 > Show 500 Sort By: None



Platinum Partners:



Diamond Partner





FIG Working Week 2016

CHRISTCHURCH, NEW ZEALAND 2-6 MAY 2016

Recovery

from disaster

Data Analysis

Welcome Map List WebView Catalog Control Panel

ADVANCED Sign Out Settings Help



Last Sign-In: 10/08 10:54:33 AM

Jump To Point...



DRAW

Annotation

- Line
- Rectangle
- Polyline
- Text
- Circle
- Image
- Eraser
- Move
- Copy
- Paste
- Undo
- Redo

Measurement

- Distance
- Area
- Perimeter

MARKER PROPERTIES

Line

- Color: Red
- Width: 2
- Dash: Solid

Text

Font: Arial

Size: 12

Style: Bold, Italic, Underline, Strikethrough, Superscript

Text Outline

- Color: Black
- Width: 2
- Dash: Solid

Text Background

- Color: White
- Width: 2
- Dash: Solid

Vertex

- Color: Yellow
- Shape: Circle
- Size: 10



04° 35' 18.320"N 74° 03' 53.903"W 2755.05 m MSL DTED0



Platinum Partners:



Diamond Partner





FIG Working Week 2016

CHRISTCHURCH, NEW ZEALAND 2-6 MAY 2016

Recovery

from disaster

Properties of the Data Display

Welcome Map List WebView Catalog Control Panel

ADVANCED Sign Out Settings Help

Last Sign-In: 10/08 10:54:33 AM

Jump To Point: Go

ENHANCE

Enhancement Tools

Contrast: 50

Brightness: 30

Gamma: 10

Saturation: 20

Sharpness: 10

Reset All

Auto Adjust

Dynamic Auto Adjust

Overview: IMG_3006.JPG

04° 35' 55.518"N 74° 04' 32.358"W



Platinum Partners:



Diamond Partner





FIG Working Week 2016

CHRISTCHURCH, NEW ZEALAND 2-6 MAY 2016

Recovery

from disaster

Publish Data

welcome map List webview Catalog Control Panel ADVANCED Sign Out Settings Help



Last Sign-In: 10/08 10:54:33 AM

Jump To Point...

PUBLISH

Save

Share

Snap to Powerpoint

WebView [Modo de compatibilidad] - Microsoft PowerPoint (Error de activación de productos)

Archivo Inicio Insertar Diseño Transiciones Animaciones Presentación con diapositivas Revisar Vista Nitro Pro 9

Upper Left Corner: N 4° 35' 55,58" W 74° 4' 33,38"
 Upper Right Corner: N 4° 35' 55,58" W 74° 4' 30,21"
 Lower Right Corner: N 4° 35' 54,21" W 74° 4' 30,21"
 Lower Left Corner: N 4° 35' 54,21" W 74° 4' 33,38"
 Center Point: N 4° 35' 54,89" W 74° 4' 31,8"

Diapositiva 1 de 1 "Office Theme" Inglés (Estados Unidos) 92%

Overview IMG_3006.JPG 04° 35' 25.024"N 74° 04' 04.010"W 2693.20 m MSL DTED0



Platinum Partners:



Diamond Partner





FIG Working Week 2016

CHRISTCHURCH, NEW ZEALAND 2-6 MAY 2016

Recovery

from disaster

Download Data

Welcome Map List WebView Catalog Control Panel

ADVANCED Sign Out Settings Help

STATUS GXP Explorer Search... Search

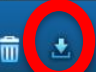

Last Sign-In: 10/08 10:45:00 AM CART 2 items

Center Map To... Go

Search By Search Results Saved Searches Catalogs

Time Slider 4983 total results

Products: 2, Calculate size: 0.00 bytes

File	Metadata
 Filename: IMG_1223.JPG File Size: 3.55 MB Date Cataloged: 2015-10-07T15:41:37.183Z	Begin Date 2014-04-19T09:50:20.000Z Date Collected 2014-04-19T09:50:20.000Z End Date 2014-04-19T09:50:20.000Z Filename IMG_1223.JPG Mean GSD 2.4984446099393365 NBANDS 3 NBPP 8 NCOLS 4608 NROWS 3456
 Filename: IMG_3006.JPG File Size: 4.71 MB Date Cataloged: 2015-10-07T15:17:47.612Z	

Show 100 per page

Show 500 Sort By: None

04° 41' 46.320"N 73° 57' 59.760"W



Platinum Partners:



Diamond Partner





FIG Working Week 2016

CHRISTCHURCH, NEW ZEALAND 2-6 MAY 2016

Recovery

from disaster

Upload Data

Welcome Map List WebView Catalog Control Panel

ADVANCED Sign Out Settings Help

STATUS GXP Xplorer Search... Search

Last Sign-In: 10/08 10:45:00 AM CART 2 items

Center Map To... Go

File Upload

Search By Search Results Saved Searches Catalogs

Time Slider 4983 total results

1 2 3 ... 10 Show 500 Sort By: None

04° 48' 00.760"N 73° 51' 53.910"W

UPLOAD FILES

Upload Files:

Verify GXP Xplorer Java [Settings](#)

File 1	Seleccionar archivo	Ningún archivo seleccionado
File 2	Seleccionar archivo	Ningún archivo seleccionado
File 3	Seleccionar archivo	Ningún archivo seleccionado
File 4	Seleccionar archivo	Ningún archivo seleccionado
File 5	Seleccionar archivo	Ningún archivo seleccionado
File 6	Seleccionar archivo	Ningún archivo seleccionado
File 7	Seleccionar archivo	Ningún archivo seleccionado
File 8	Seleccionar archivo	Ningún archivo seleccionado

Edit Metadata

Upload



Platinum Partners:



Diamond Partner





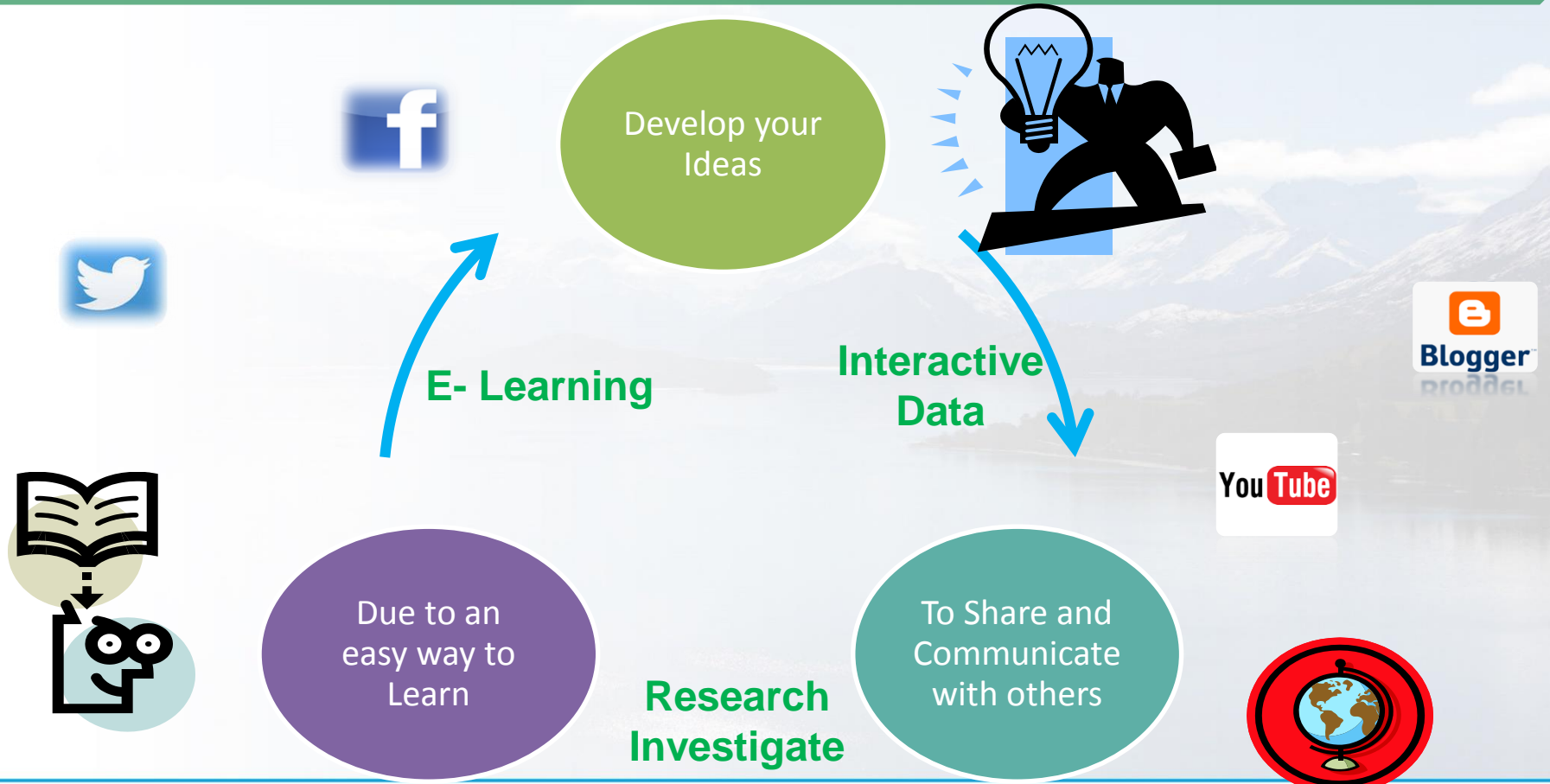
FIG Working Week 2016

CHRISTCHURCH, NEW ZEALAND 2-6 MAY 2016

Recovery

from disaster

Social media is the platform for developing a connection between practitioners and academia



Platinum Partners:



Diamond Partner





FIG Working Week 2016

CHRISTCHURCH, NEW ZEALAND 2-6 MAY 2016

Recovery

from disaster

Pointshare Social media

pointshare.org



Department of Civil and Environmental Engineering
SUR Investigation Group

Home

Who are we?

Publications

Point Data Share

News

PS Blogs

Follow Us

POINT SHARE - PS. Sharing for all

- Climate Change Adaptation and Mitigation Blog
- Disaster Risk Management Blog



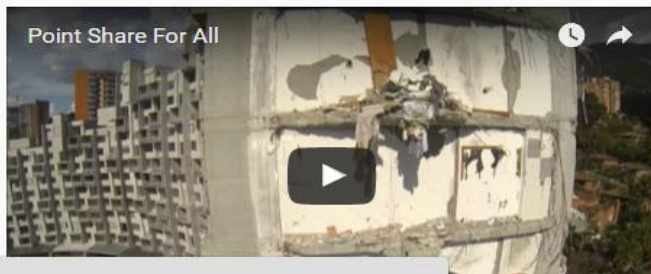
FIG Working Week 2016

CHRISTCHURCH, NEW ZEALAND
2-6 May 2016



Recovery
from disaster

What is this?



Social links



Gallery



Platinum Partners:



Diamond Partner





FIG Working Week 2016

CHRISTCHURCH, NEW ZEALAND 2-6 MAY 2016

Recovery

from disaster

Working group 7.2 has the objective, using pointshare, to develop key policy documents in the next 4 years

Guidelines for post- and pre-disaster management of land rights

Whitepaper on the use of new technologies for spatial data collection for disaster prevention and management

Analysis of climate change impacts on land management and land use

Guidelines for spatial data infrastructure (SDI) development and sharing for disaster management



FIG Working Week 2016

CHRISTCHURCH, NEW ZEALAND 2-6 MAY 2016

Recovery

from disaster

POINTSHARE.ORG

Thank you!



Platinum Partners:



Diamond Partner

