

Strategic Position Model Geo-ICT Function: Facing the Challenge of Organizational Alignment

Michiel Jellema
15 april 2010

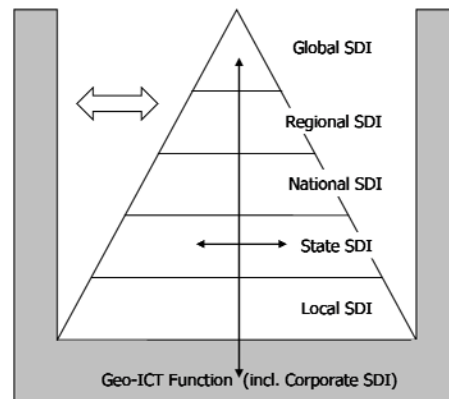
Introduction



- Alignment among organizations and SDI's
- Strategic Position Model Geo-ICT Function
- Results of case-study
- Summary

Alignment among organizations and SDI's

SDI Hierarchy Model and corporate SDI



Strategic Position Model Geo-ICT Function

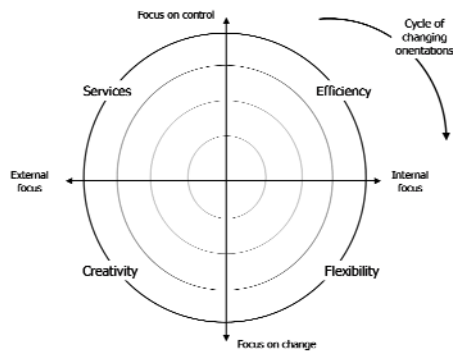
Purpose of this model

- Explain the dynamic alignment between the development of the internal Geo-ICT function of an organization and the interest of this organization in an SDI.
 1. Alignment between organization and Geo-ICT function
 2. Alignment between Geo-ICT function and an SDI

Strategic Position Model Geo-ICT Function

Components of the model

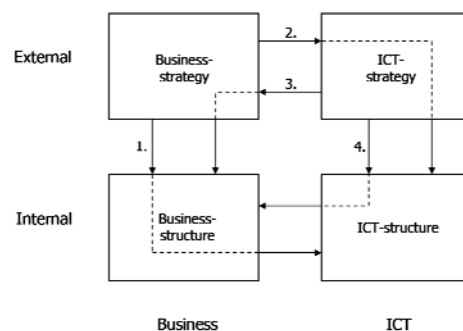
1. Four basic competencies of an organization
2. Orientations of an organization
3. Strategic criteria
4. Change over time



Strategic Position Model Geo-ICT Function

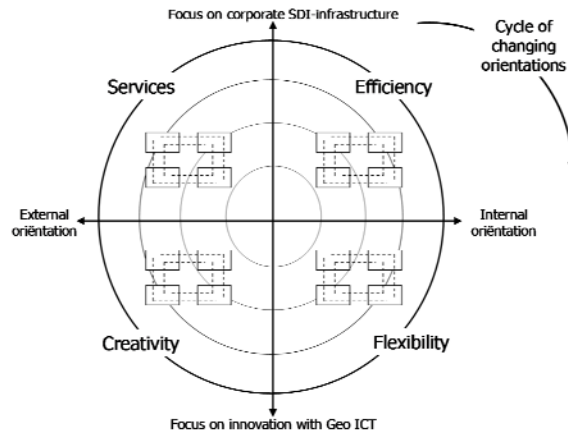
Components of the model

5. Alignment perspective between business and Geo ICT-function



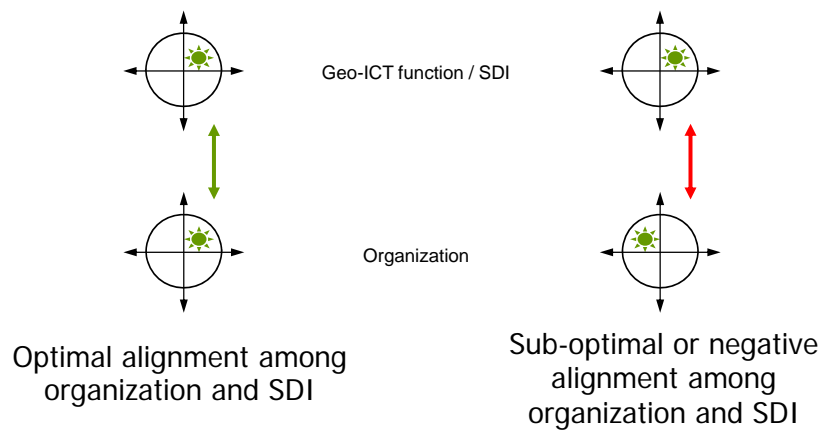
Strategic Position Model Geo-ICT Function

The model



Strategic Position Model Geo-ICT Function

Alignment of organization and Geo-ICT Function / SDI



Strategic Position Model Geo-ICT Function

Using the model

Moments of intervention:

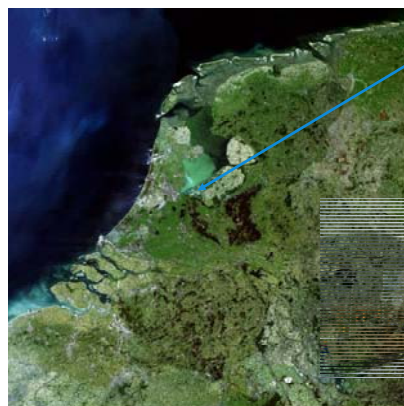
- Policy plan for reorganization
- Policy document Geo-ICT function / SDI

Points of investigation:

- Goal of the intervention
- Result of the intervention
- Type of organizational structure
- Model of decision-making
- Profile of organizational culture
- Dominant management perspective

Results of case-study

Case City of Almere



City of Almere
(190.000 citizens)



Results of case-study

Case City of Almere

5 moments of intervention:

- Policy plan for reorganization
 - a. Structure & Control (1992)
 - b. Direction of our organization (1998)
- Policy document Geo-ICT function / SDI
 - c. Policy document Geo-ICT function (1994)
 - d. Plan Geo-ICT function (1999)
 - e. Policy plan Geo-ICT function & SDI (2007)

Results of case-study

Case City of Almere

1. Alignment between organization and Geo-ICT function

