

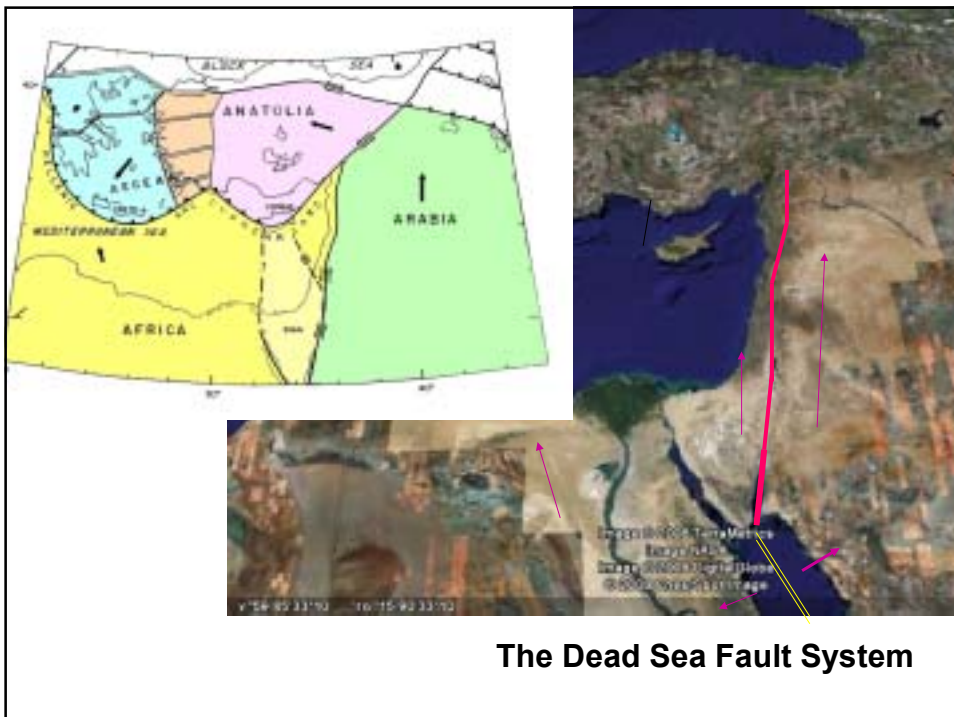


Ministry of National Infrastructures
Inter-ministerial Steering Committee for
Earthquake Preparedness

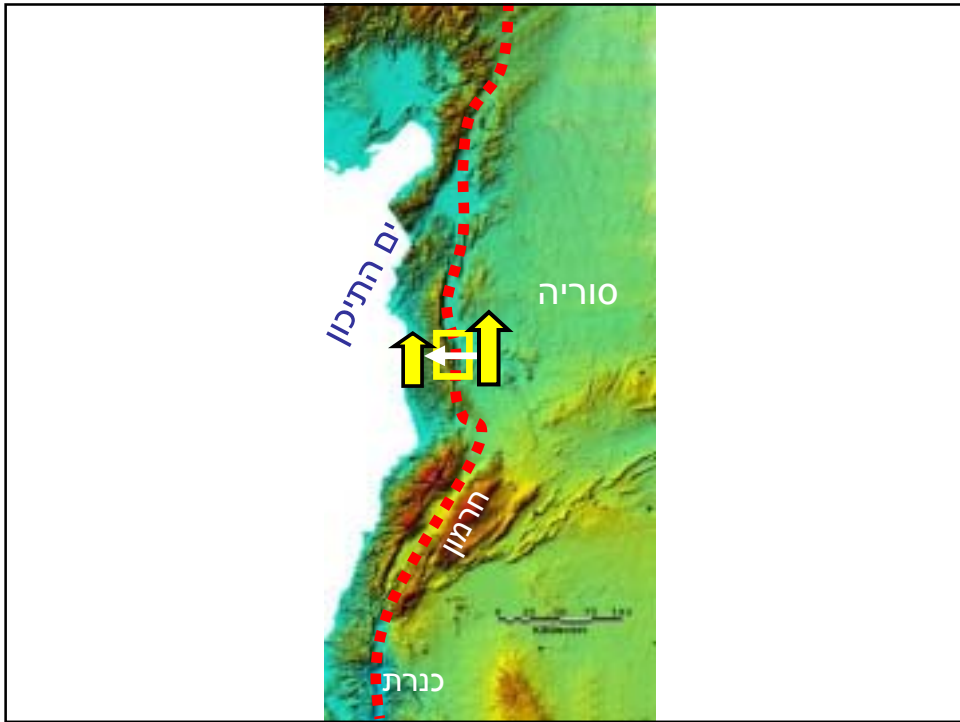
On Earthquake Preparedness in Israel

Dr. Avi Shapira

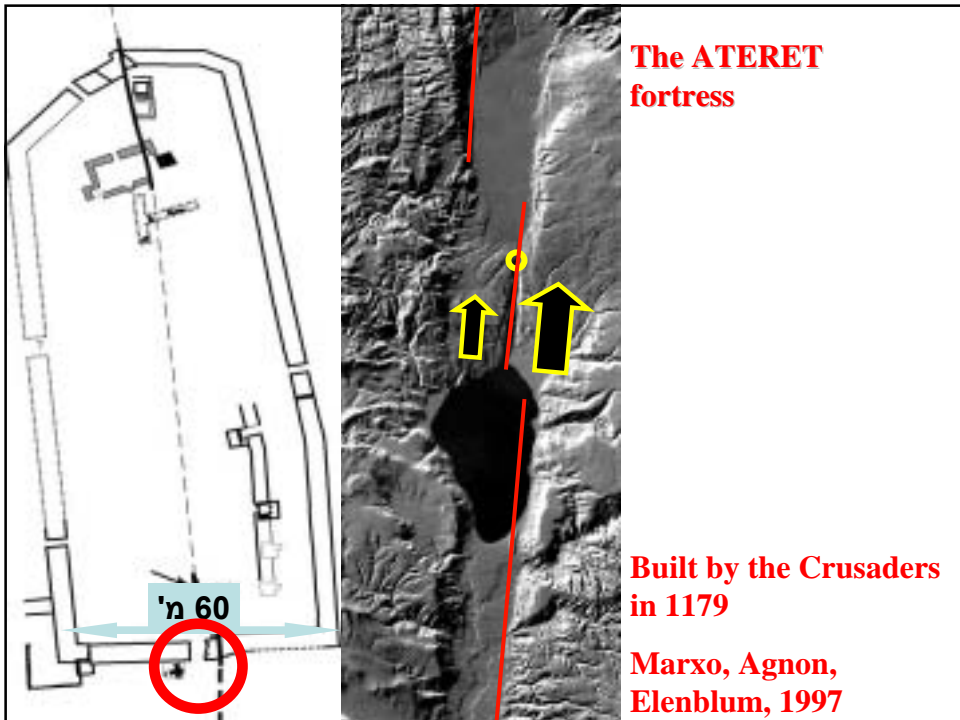
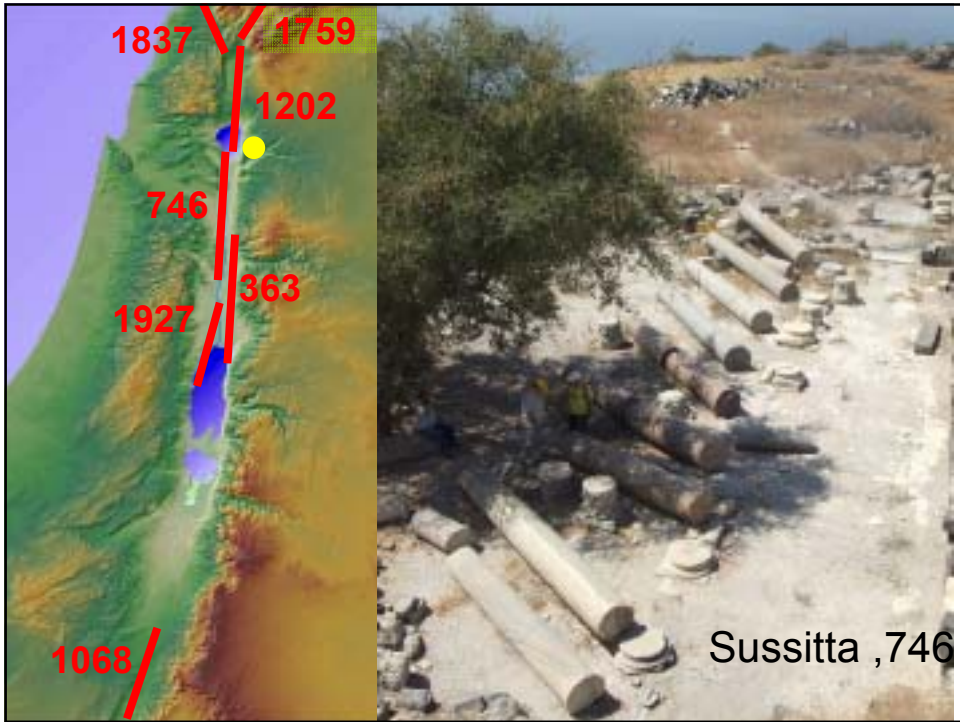
Chairman of the Steering Committee



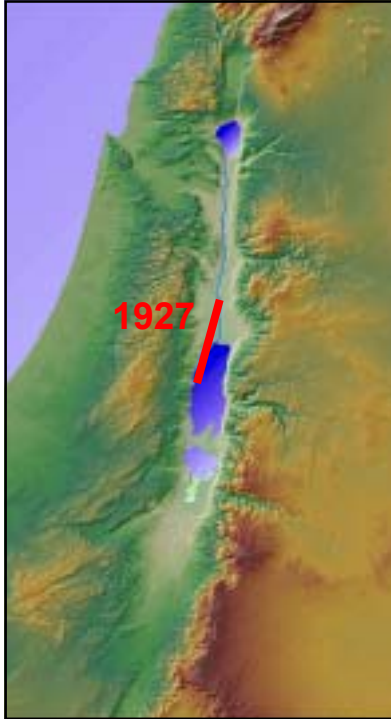
The Dead Sea Fault System











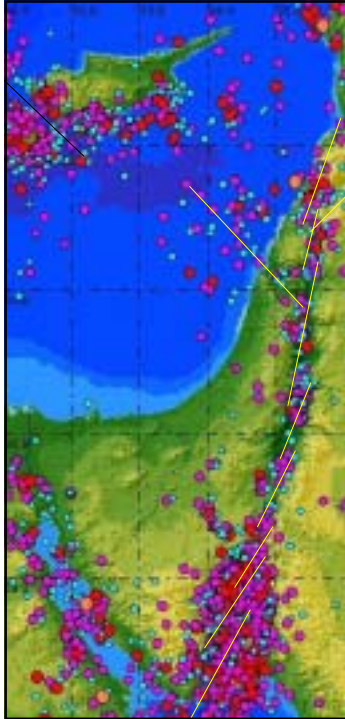
Jericho

Nablus



Gulf of Aqaba/Eilat , 22 November 1995, Mw=7.2

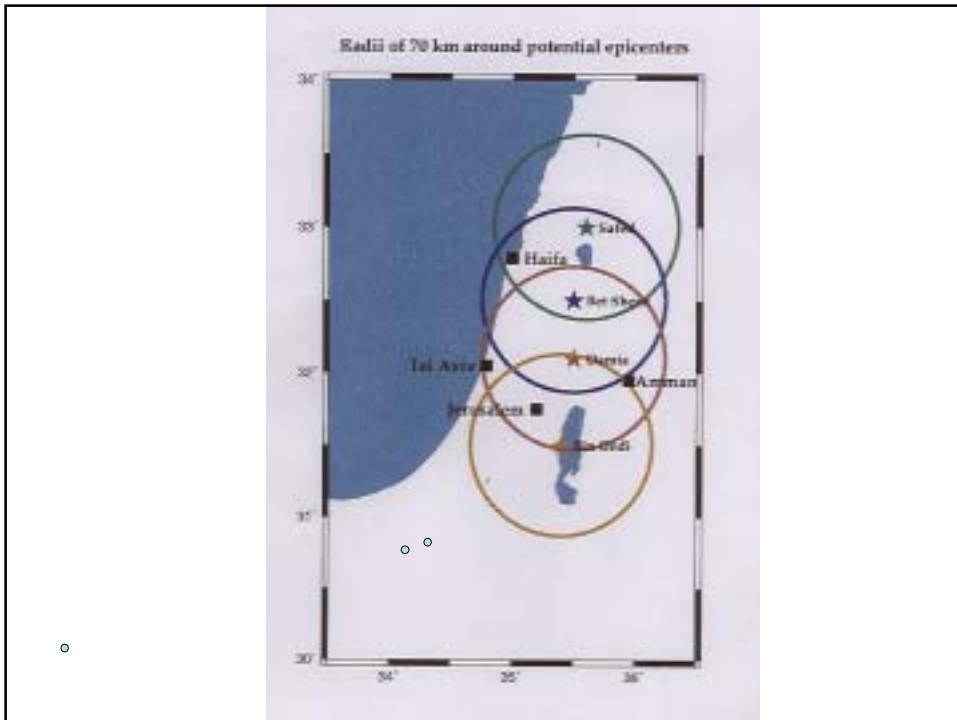
Three photographs illustrating the ground damage caused by the 1995 Gulf of Aqaba earthquake. The top-left photo shows a large, rectangular concrete structure that has shifted and tilted. The top-right photo shows a road with a significant vertical crack and a displaced concrete curb. The bottom photo shows a large, circular area of ground that has subsided, creating a deep depression in the earth.

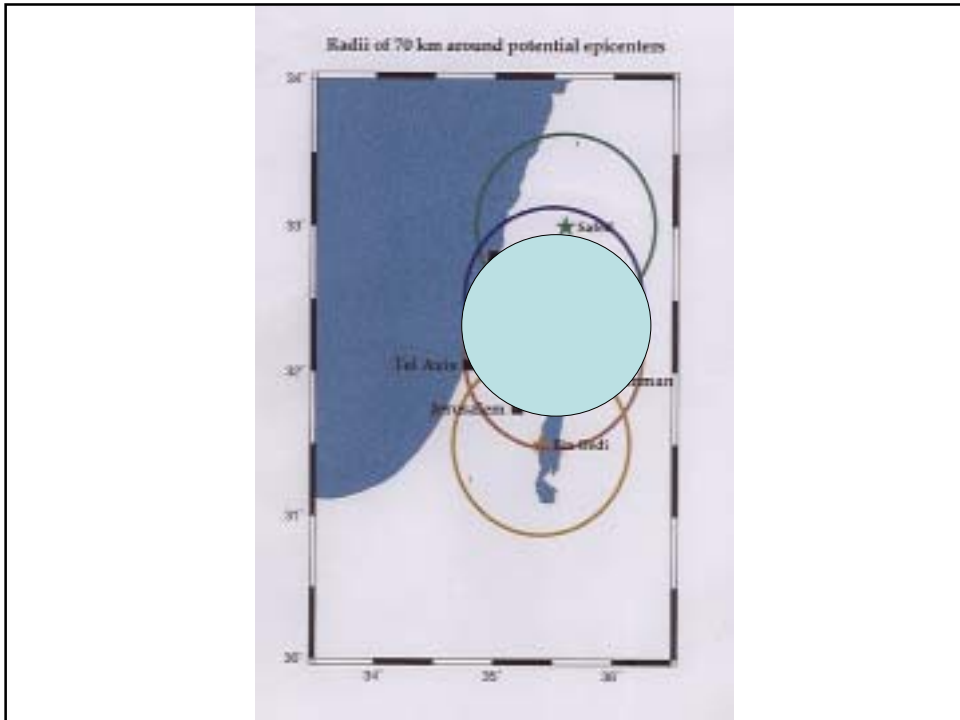


Ministry of National Infrastructures
Inter-ministerial Steering Committee for
Earthquake Preparedness



**Earthquake Epicenters
located by the Israeli Seismic
Network (1980-2005)**





THERE ARE NO DANGEROUS EARTHQUAKES ONLY DANGEROUS BUILDINGS

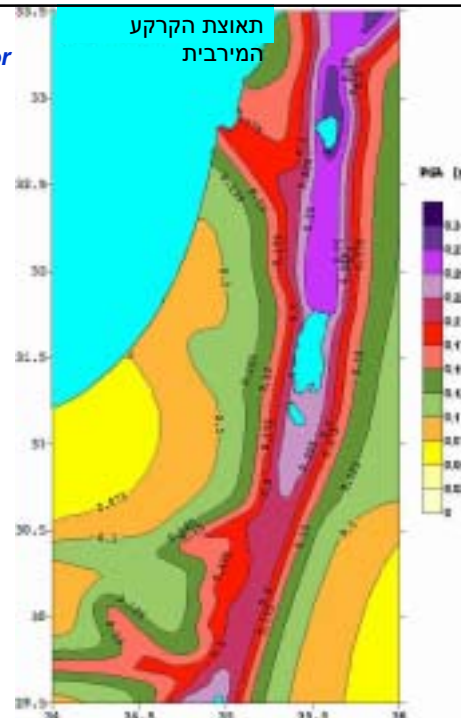


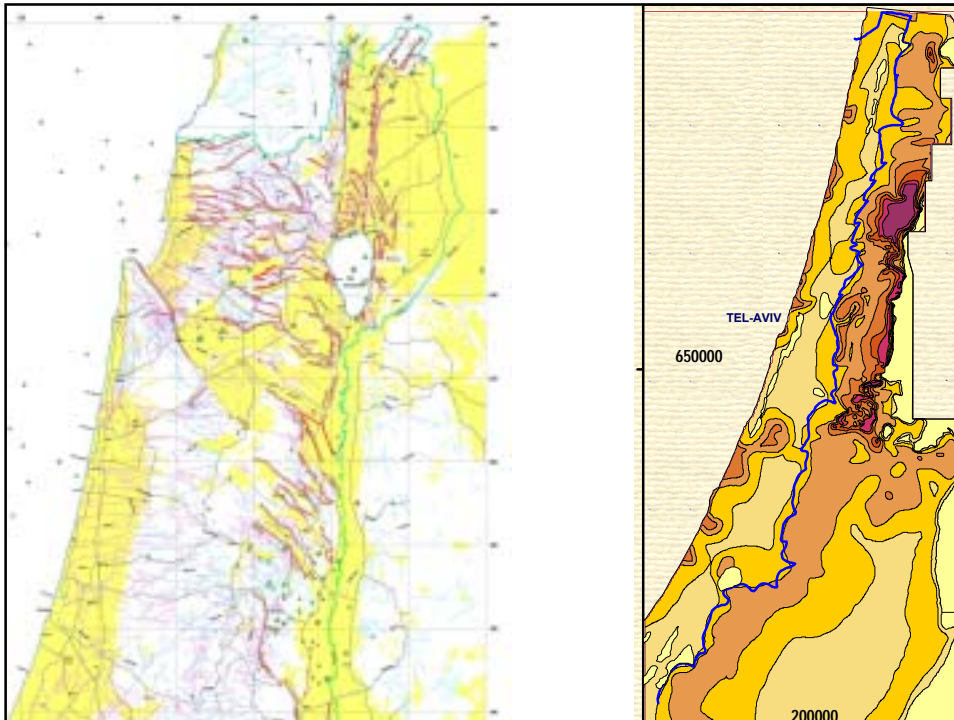
**THERE ARE NO DANGEROUS EARTHQUAKES ONLY
DANGEROUS BUILDINGS**




Ministry of National Infrastructures
Inter-ministerial Steering Committee for
Earthquake Preparedness

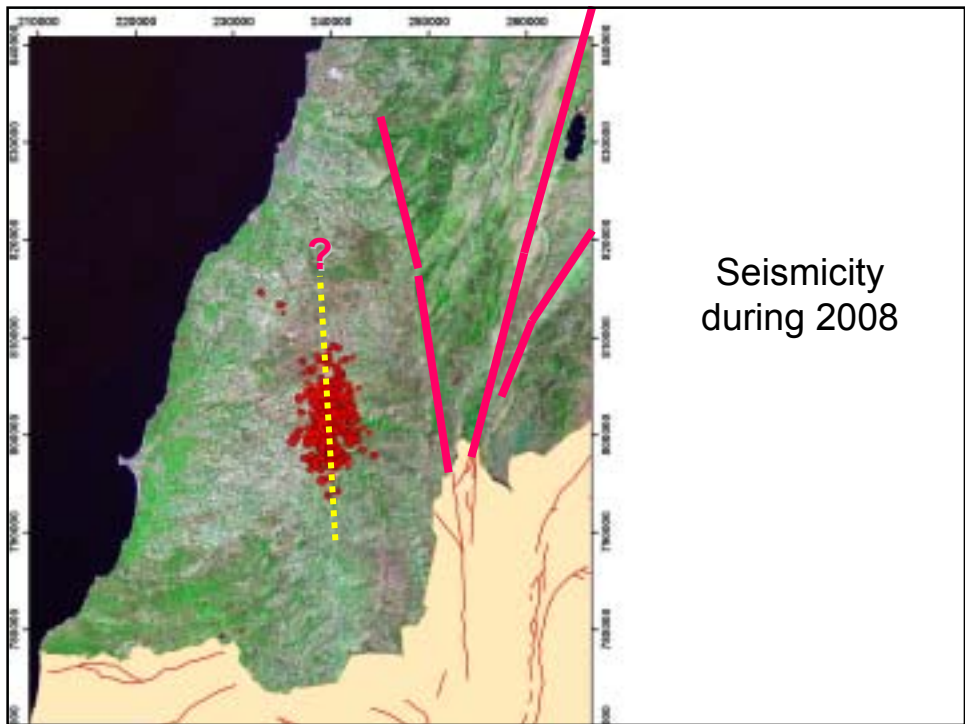
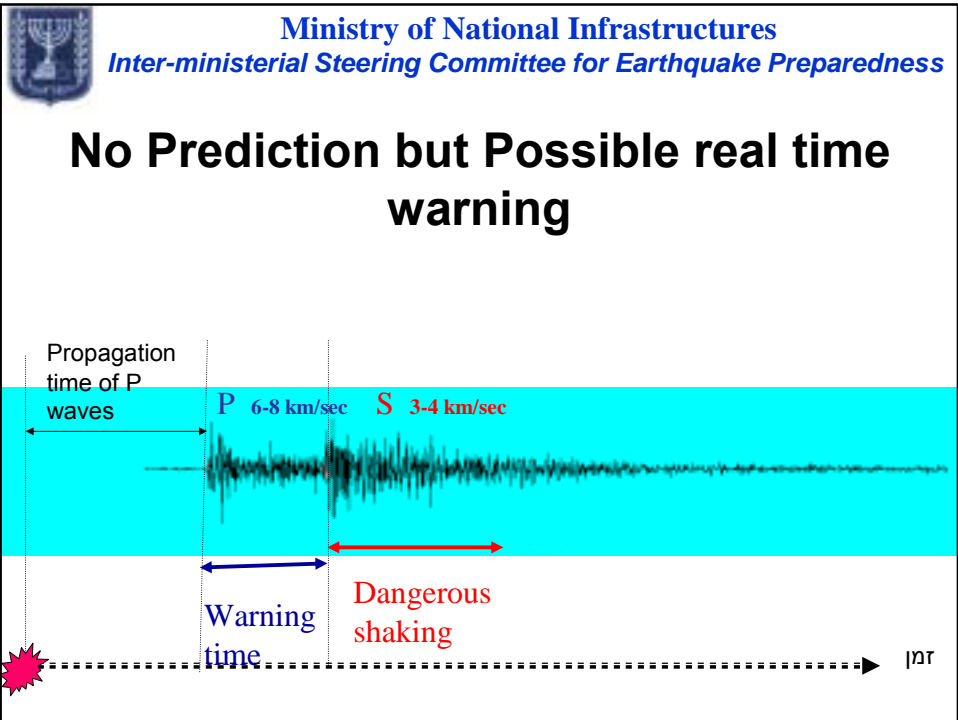
**FOCUS ON
PREVENISION AND
MITIGATION
RATHER THAN ON
RESPENSE**





 Ministry of National Infrastructures
Inter-ministerial Steering Committee for Earthquake Preparedness

Life saving: The prime responders to an Earthquake catastrophe are the **Local Authority** and the **Local Population**



Jerusalem, July 11, 1927



THANK YOU !