



Kawloon II

Technical Session 5H





Papername

**Global Surface Model using
Space-shuttle Radar
Topographic Mission Dataset
and
Global Indexing Grid**

Research Team

3D Geoinformation, Aalborg University

Denmark

Kolar, Bodum, Kjems og Sørensen



Content:

1. Aalborg University – Denmark
2. Centre for 3D Geoinformation
3. Global Indexing Grid – the paper
4. Grifinor – an invitation

1. Aalborg University – Denmark
2. Centre for 3D Geoinformation
3. Global Indexing Grid – the paper
4. Grifinor – an invitation



Aalborg University - Denmark

- 5 mio inhabitants in Denmark
- Located in Aalborg – Northern Region
- Aalborg University established in 1974
- Full scale – 3 faculties – B./M.Sc/Ph.D
- 14.000 student, 2000 Staff.
- Fully based on Problem Based Learning



Esben Munk Sørensen

- Aalborg University, Professor, M.Sc., PhD
- Head of Geoinformatics and Landmanagement:
 - Centre for 3D Geoinformation
 - Laboratory for Geoinformatics
 - School of Surveying and Planning
- =1/3 of Development & Planning(120 staff)
Traffic and Spatial Planning, Energy and Ecology, Environmental Management.

M. Sc. - Chartered Surveyor Study Programme



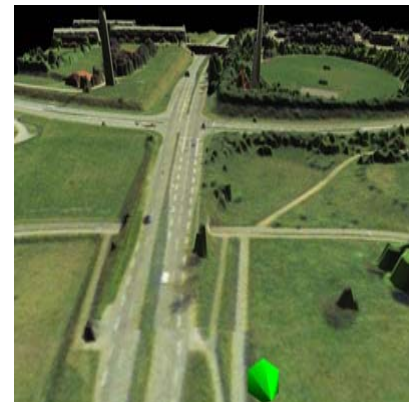
* In co-operation with Faculty of Engineering LTH / Lund University

Centre for 3D GeoInformation

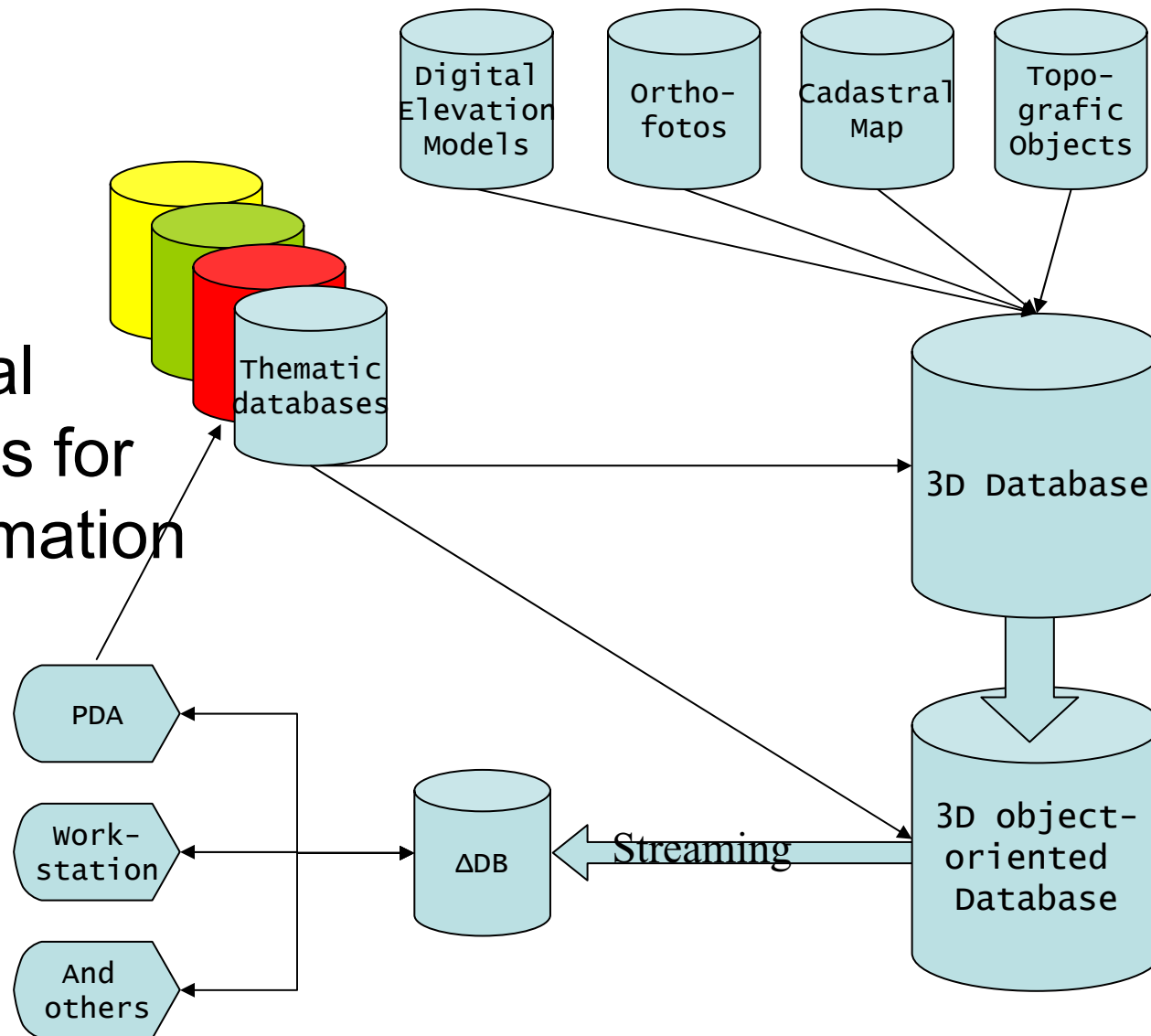
www.3dgi.dk

1. Aalborg University – Denmark
2. Centre for 3D Geoinformation
3. Global Indexing Grid – the paper
4. Grifinor – an invitation

- Knowledge and competence in creating 3D models of cities and landscapes
- Forming the basis for future research and regional knowledge within location-based services and augmented reality.
- Focus on "remodelling" spatial information to meet the challenge of working in 3D-spaces in full digital integrated environment



Futural digital environments for 3D-geoinformation



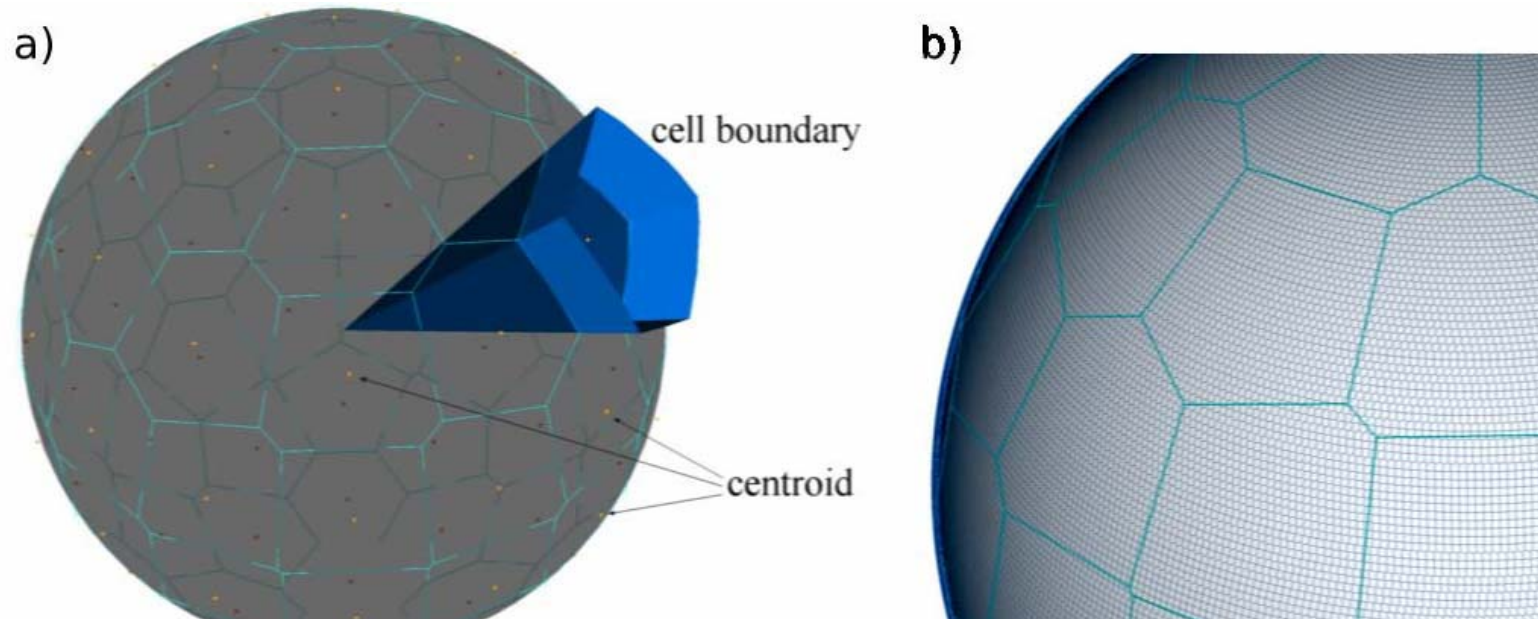


Global Surface Model using Space-shuttle Radar Topographic Mission Dataset and Global Indexing Grid

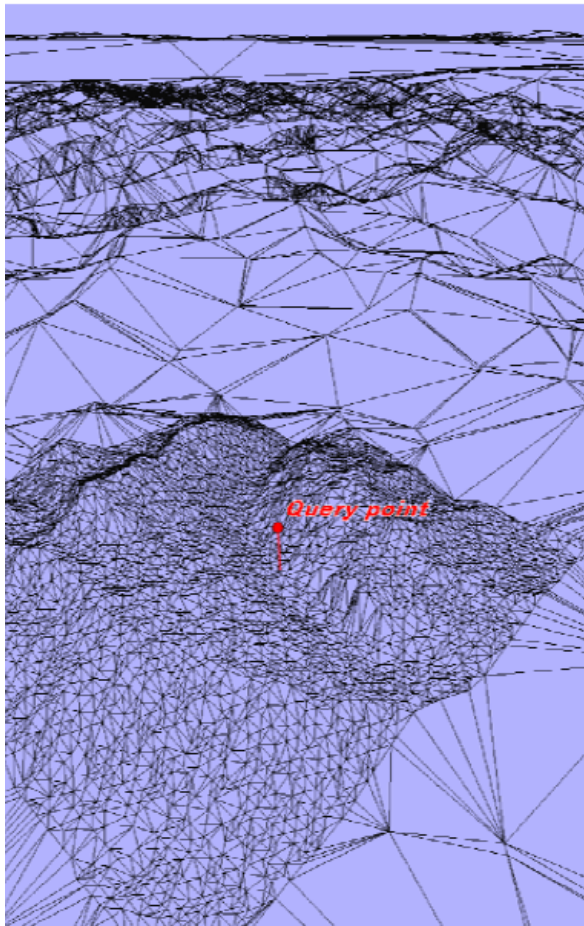
Research Questions.

- Questions about spatial reasoning and volumetric calculations in connection with different types of simulation has been very dependent on a priori models and very fast computer graphics hardware and software.
 1. Essential that the features of the model become real objects with attributes.
 2. Handles 3D data structures as objects with facilities to support real-time geovisualization.

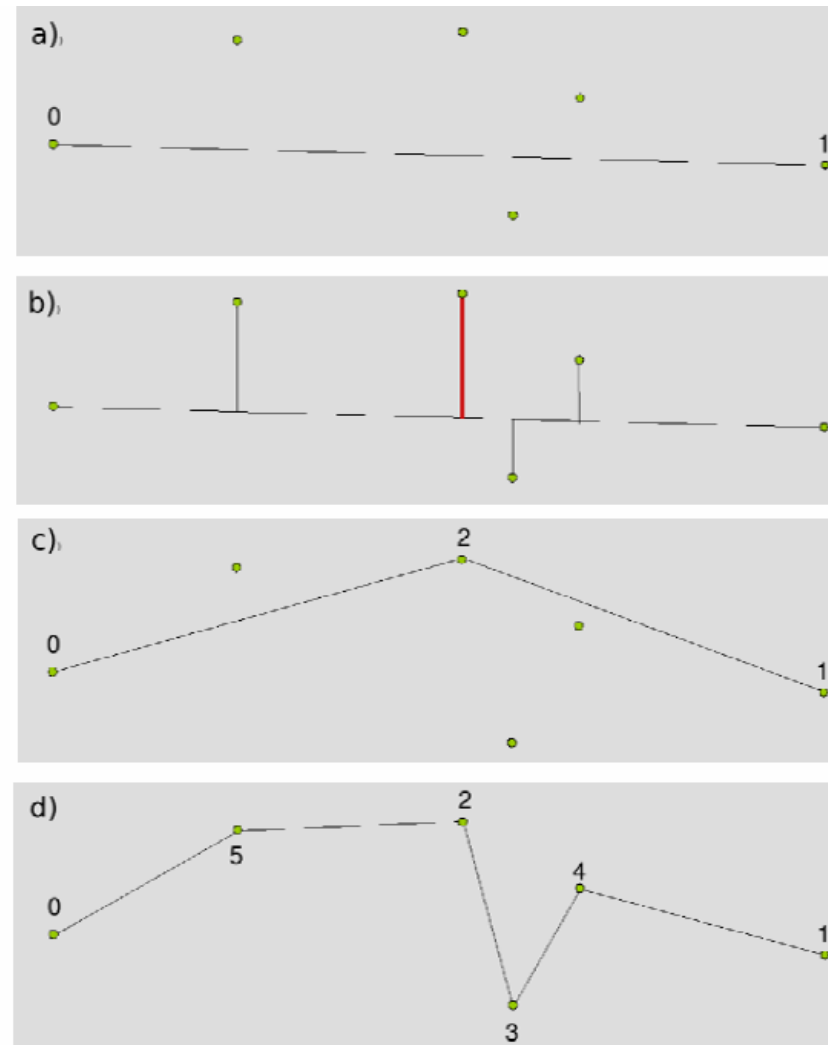
Global Indexing Grid



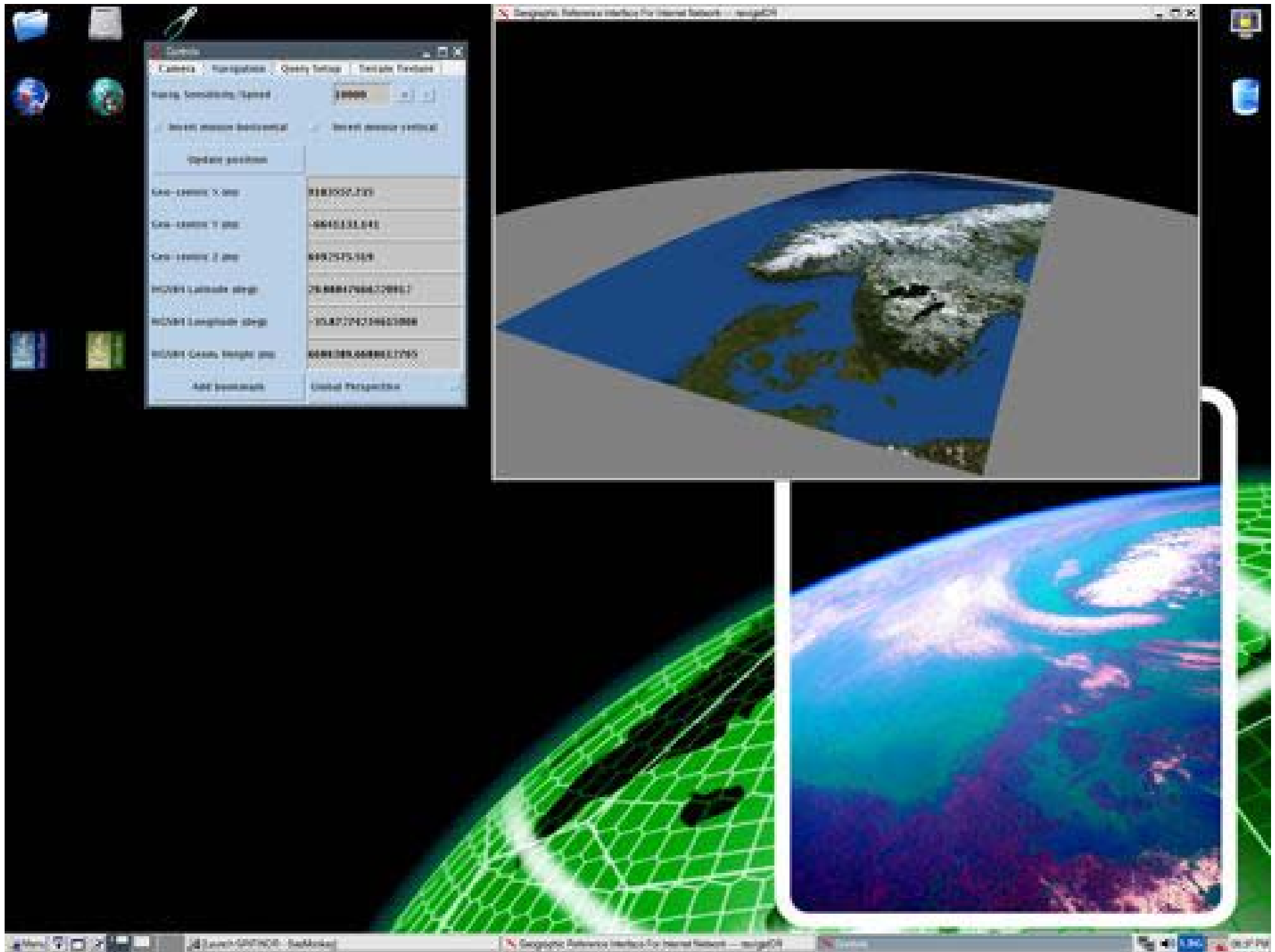
Processing data for a multiresolution surface representation



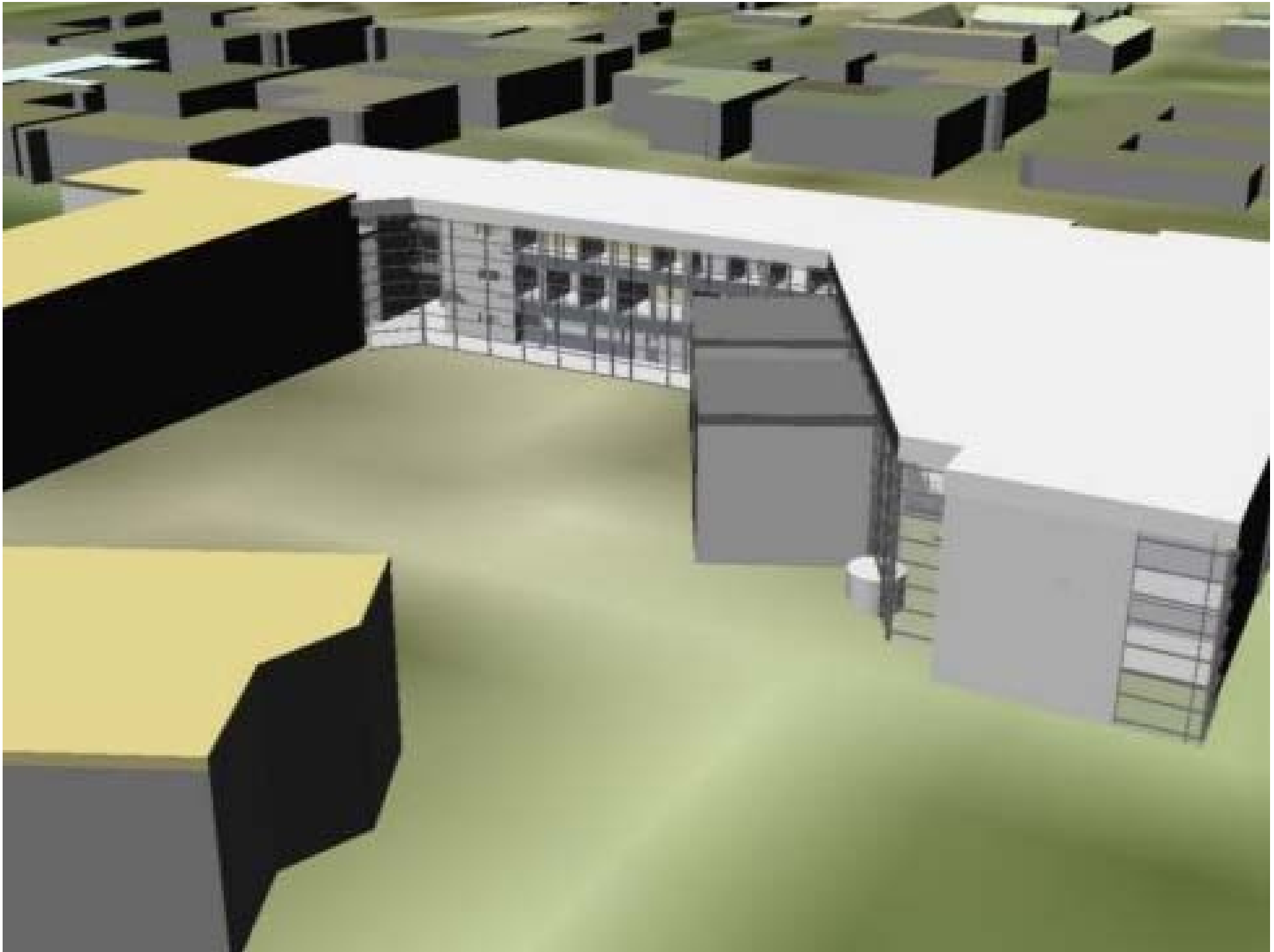
2).















Invitation to participate: www.grifinor.dk

http://www.grifinor.net/ - Microsoft Internet Explorer

Filer Rediger Vis Foretrukne Funktioner Hjælp

Tilbage Søg Foretrukne

Adresse <http://www.grifinor.net/>

msn Søg på internettet

Y! Search Mail My Yahoo! Sign In

Google

[START GRIFINOR](#) [SIGN IN](#)

ABOUT

GALLERY

DOCUMENTATION

GRIFINOR

decentralized platform for 3D geovisualization

DOWNLOAD

Copyright © 2006 GRIFINOR project

Wireless Connection: ST

You have connected to a new Wireless Network. Press here to [Add a new configuration](#) or [Close](#)

Udført

start http://www.grifinor.n... Dokumenter Søg på pc'en 17:09

Thanks for attention!

- www.3dgi.dk
- www.grifinor.net

