

Stakeholder co-operation in Swedish Land Administration and Land Information



XXIII International FIG Congress
October 8-13, 2006, Munich, Germany

Jan Hallebro
Unit for Cooperation, Advice and Support
Land and Geographic Information
Lantmäteriet/National Land Survey, SWEDEN



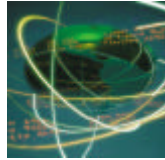
1

Jan Hallebro, 2006

About Lantmäteriet

Lantmäteriet is the coordinator of the Swedish spatial data infrastructure and an important producer and provider of fundamental geographic data and maps.

Lantmäteriet is the leading party in Swedish Land Administration and Land Information



2

Jan Hallebro, 2006

About Lantmäteriet

We are responsible for property formation and provide an extensive amount of information on our country's 3.2 million real properties.

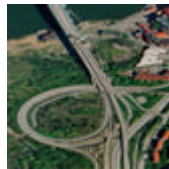


3

Jan Hallebro, 2006

About Lantmäteriet

We are specialists in geographic information, land information, cadastral services and geographic information techniques



4

Jan Hallebro, 2006

Stakeholder cooperation in Swedish Land Administration and Land Information

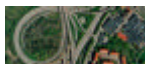
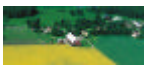
Contents

- Stakeholder co-operation; Why? How? Governing principles
- Stakeholders and their characteristics
- Various forms of co-operation
- Contents of agreements with some stakeholders

Stakeholder co-operation

Why co-operation for national geographic databases ?

- The needs from Market and Society
- No party manage itself
- Common responsibility
- A new phase in the information development of Lantmäteriet



5

Jan Hallebro, 2006




6

Jan Hallebro, 2006

Governing Principles

Contents

- Stakeholder co-operation
- Governing principles
- Stakeholders and their characteristics
- Various forms of co-operation
- Contents of agreements with some stakeholders



Capture the information at its source!

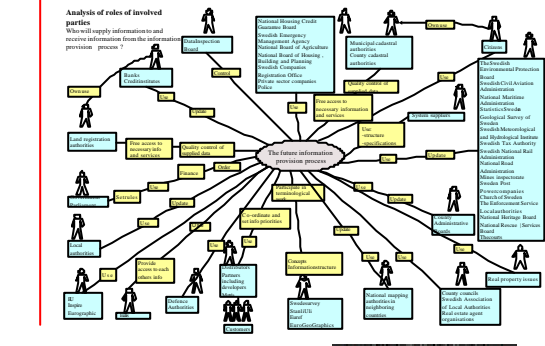
Standardized information

System independent interfaces for exchange of data

7 Jan Hallebro, 2006

Stakeholder analysis

Analysis of roles of involved parties
Who will supply information to and receive information from the information process? (page 7)



8 Jan Hallebro, 2006

Stakeholders characteristics

Contents

- Stakeholder co-operation
- Stakeholders and their characteristics
- Various forms of co-operation
- Contents of agreements with some stakeholders

Co-operation in different ways depending on:

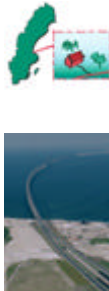
- Stakeholders who use and provide information
- Stakeholders who only use the information
- Regulated by Law
- Voluntary agreements

9 Jan Hallebro, 2006

Stakeholders who USE and PROVIDE information

Examples:

- National Courts - land registration
- National Tax Board - property taxation
- County Administration - registration of plans and regulations
- Local Authorities - e.g. cadastre, addresses, buildings
- Banks and Credit Unions - registration of mortgage deeds



10 Jan Hallebro, 2006

Stakeholders who only USE information

Examples:

- Business Partners
- Real Estate Agents
- Police
- Emergency Management Agencies
- Property Valuation companies
- GIS consultants
- Private individuals



11 Jan Hallebro, 2006

Various forms of co-operation

Co-operation

- with information producers
- with business partners/resellers
- with Advisory Boards and others

12 Jan Hallebro, 2006

Co-operation for Land Registration



Contents
Stakeholders
Governing principles
Stakeholders and their characteristics
Various forms of co-operation
Contents of agreements with some stakeholders

- Regulated by Law
- Lantmäteriet holds the registration system
- Lantmäteriet publicizes the information
- Possible change of responsibility in 2007

Co-operation for registration of Plans and Regulations

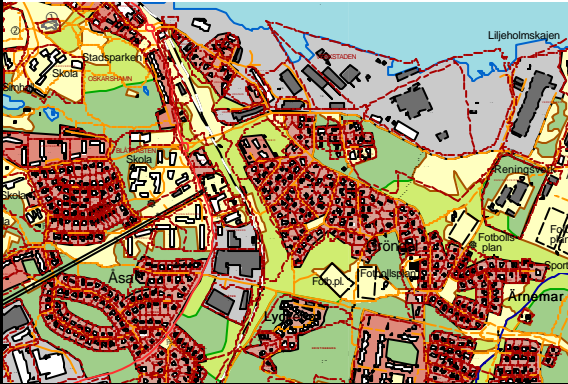


Contents
Stakeholders
Governing principles
Stakeholders and their characteristics
Various forms of co-operation
Contents of agreements with some stakeholders

- Regulated by Law
- Municipalities and County Administrations registers land use regulations, e.g. national parks, nature reserves, building plans
- Cadastral Authorities (Lantmäteriet, some Municipalities) adds real property units affected
- Information shown as areas (zones) at the Cadastral Index Map

Oskarshamn

Information shown as areas (zones) at the Cadastral Index Map



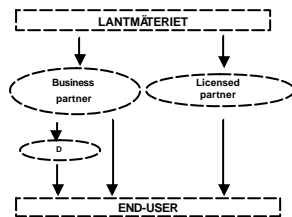
Co-operation with Local Authorities - Municipalities



Contents
Stakeholders
Governing principles
Stakeholders and their characteristics
Various forms of co-operation
Contents of agreements with some stakeholders

- Normative agreement**
- voluntary
 - agreement of co-operation level
 - economic compensation
 - annual follow-up
 - Co-operation Group together with the Swedish Association of Local Authorities

Co-operation with Partners for Dissemination of information



Contents
Stakeholders
Governing principles
Stakeholders and their characteristics
Various forms of co-operation
Contents of agreements with some stakeholders




Our partners



Contents
Stakeholder co-operation
Stakeholders and their characteristics
Various forms of co-operation
Contents of agreements with some stakeholders

Co-operation through Advisory Boards and others

- The GI Advisory Board
- The Place-Names Advisory Board
- The Land and Real Estate Advisory Board
- The Credit Market Advisory Board
- Swedish Development Council for Geographic Information
- STANLI – SIS, Swedish Standards Institute



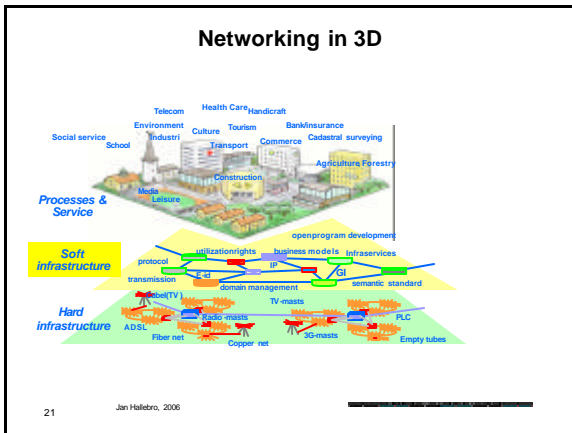
19 Jan Hallebro, 2006

Contents
Stakeholders
Governing principles
Stakeholders and their characteristics
Various forms of co-operation
Contents of agreements with some stakeholders

Co-operation with the Municipalities

- The needs from market and society
- Joint responsibility for Cadastral Services
- Produce a Swedish SDI

20 Jan Hallebro, 2006



Contents
Stakeholders
Governing principles
Stakeholders and their characteristics
Various forms of co-operation
Contents of agreements with some stakeholders

A New Framework Agreement with the Municipalities

Co-operation between
Lantmäteriet and the Municipalities
of Sweden
within the Field of Surveying, Mapping
and Geographical Information

2003

22 Jan Hallebro, 2006

Contents
Stakeholders
Governing principles
Stakeholders and their characteristics
Various forms of co-operation
Contents of agreements with some stakeholders

Content of Framework Agreement

1. **Agreement** - Principles and foundations for co-operation
2. **Model for Compensation (Payment)**
Description of co-operation levels

Payment according to three co-operation levels

Division into different groups of information
- Addresses - Buildings - Cadastral Index Map - Topographical Objects
3. **Catalogue of Objects** - Description of Topographical Objects

23 Jan Hallebro, 2006

Contents
Stakeholders
Governing principles
Stakeholders and their characteristics
Various forms of co-operation
Contents of agreements with some stakeholders

Normative Agreement with individual Local Authorities

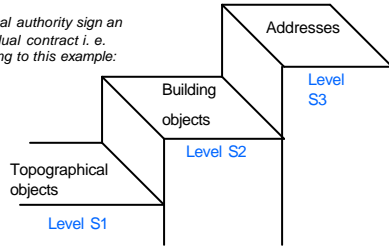
1. **Addresses, buildings and topographical details**
2. **National Digital Cadastral Map**
3. **Cooperation in cadastral surveying**
4. **Cooperation in development, up-dating and distributing of jointly owned geographic databases**

24 Jan Hallebro, 2006

Co-operation with the Municipalities

Co-operation levels and economic compensation

Each local authority sign an individual contract i. e. according to this example:



25

Jan Hallebro, 2006

Co-operation with the Municipalities

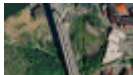
Compensation Model

Co-operation Level	S1	S1+S2	S1+S2+S3
Addresses	2,5%	4,5%	6%
Buildings	2%	3%	5%
Topography	1%	2%	3%
Index Map	4%	4,5%	7%
Total	9,5%	14%	21%

26

Jan Hallebro, 2006

Financing of the economic compensation



Pay-back from the total revenue of Lantmäteriets selling of Geographic Information

27

Jan Hallebro, 2006

Stakeholder co-operation

Expectations of Lantmäteriet

..... that we together with our stakeholders will



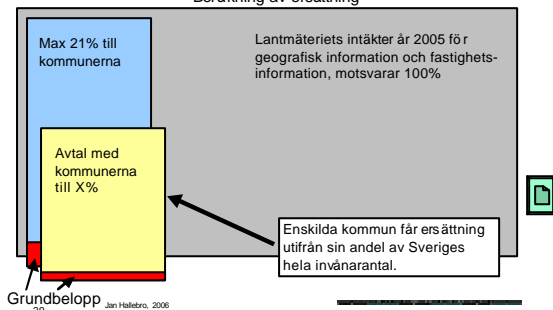
- Broaden the market of geographic information
- Give rise to a well functioning maintenance of information - all over Sweden - up to date - standardized
- Build up a Swedish SDI, (INSPIRE)

28

Jan Hallebro, 2006

Grunddata i samverkan

Beräkning av ersättning



Grundbelopp

29

Jan Hallebro, 2006

Grunddata i samverkan

Tecknade ABT-avtal (2006-07-01)

Totalt 288 ABT-avtal

- varav 71 avtal är reviderade

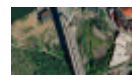
Redovisade per område och samverkansnivå

Adresser S1 - 154 S2 - 107 S3 - 25

Byggnader S1 - 213 S2 - 62 S3 - 12

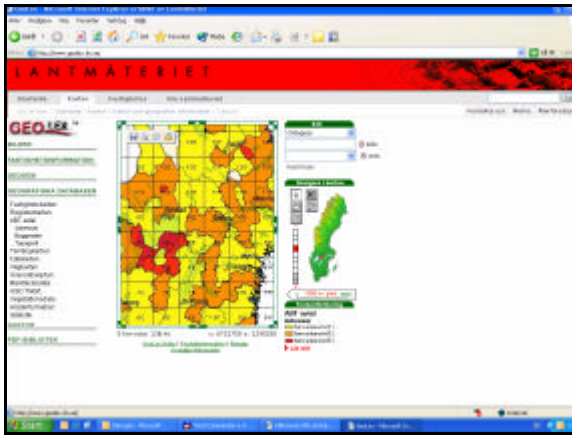
Topografi S1 - 142 S2 - 131 S3 - 2

(byggnadsgeometri)



30

Jan Hallebro, 2006

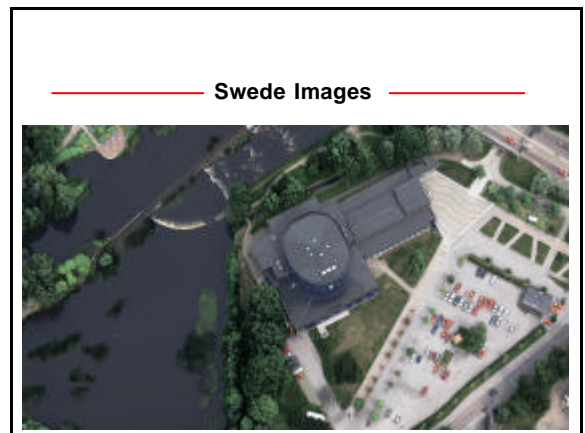
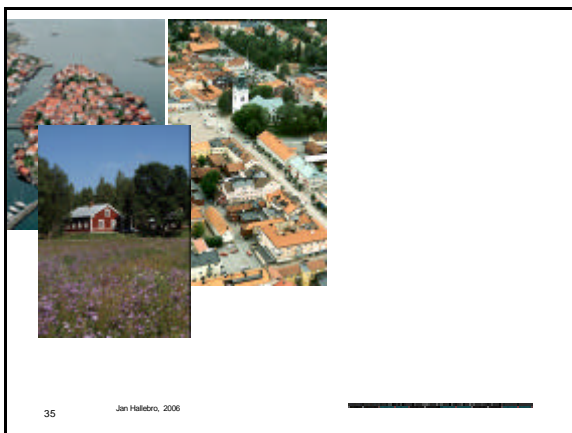


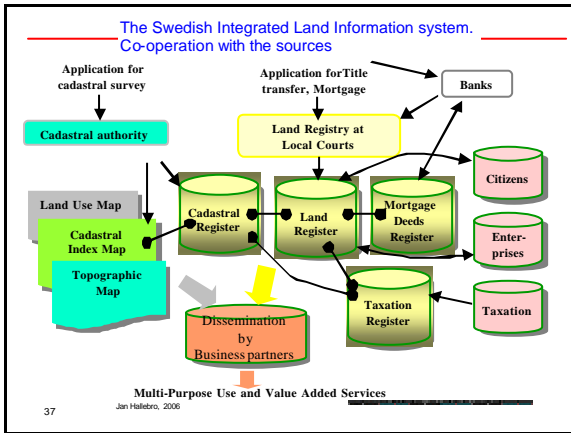
Kommunala ersättningar

Utbetalningar åren 2001 - 2006

År	Utfall
2001	8 300 000
2002	10 663 000
2003	12 161 000
2004	12 941 000
2005	34 185 000
Beräknat 2006	46 000 000

32 Jan Hallebrö, 2006

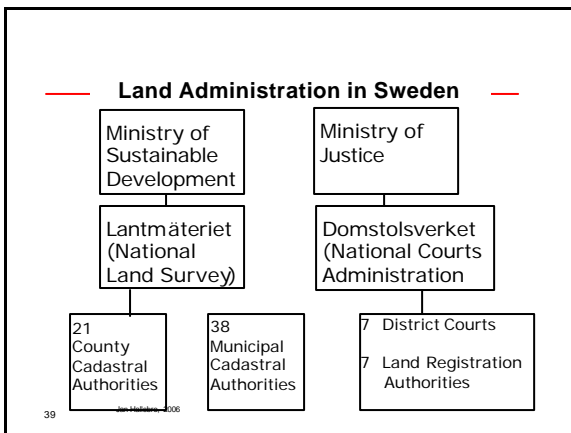




Lantmäteriets four-leaf clover

We are specialists in geographic information, land information, cadastral services and geographic information techniques. Together they put us in a unique situation.

38 Jan Hallebro, 2006



Property formation

- Property formation through formal cadastral survey
- Maintenance of the real property register
- Handling of legal matters concerning real properties

40 Jan Hallebro, 2006

Land information

It includes information in the real property register – including the digital cadastral index map – the land register and the central registers for buildings, apartments, addresses, mortgage certificates and property prices.

41 Jan Hallebro, 2006

Geographic information

It comprises basic geographic data such as co-ordinate and height data, aerial photography, and land cover data and place names

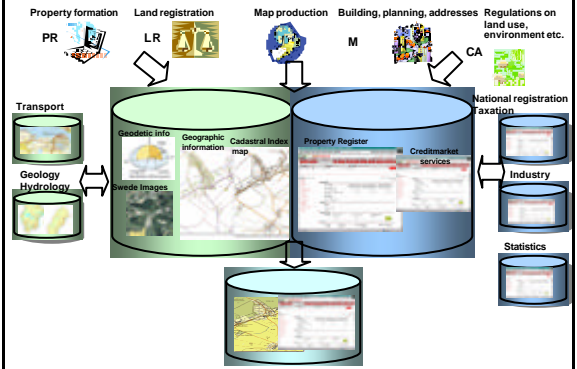
42 Jan Hallebro, 2006



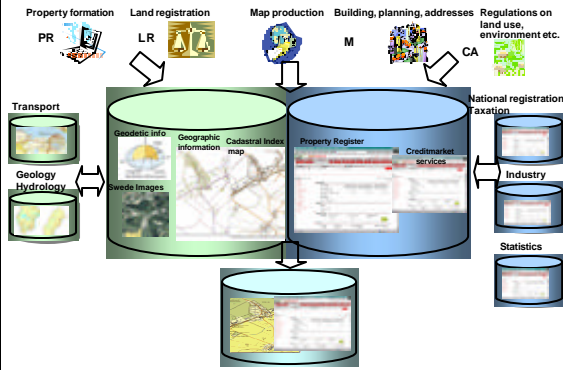
Geographic information techniques

- Aerial photos, satellite imagery, and visualisation
- Surveying and large-scale mapping
- Consultancy services, software and training
- Customised databases and maps
- Atlases and tourist maps

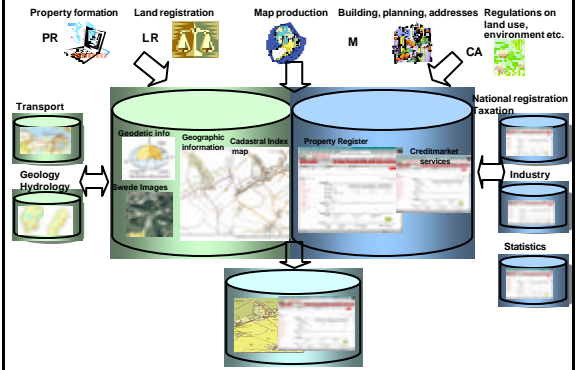
The Swedish Integrated Land Information system. Co-operation with the sources



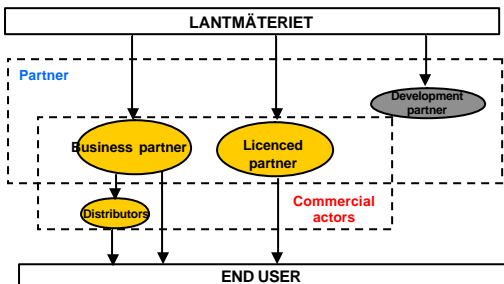
The Swedish Integrated Land Information system. Co-operation with the sources



The Swedish Integrated Land Information system. Co-operation with the sources



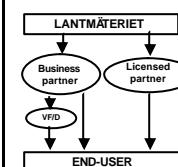
Partner structure



Business plan

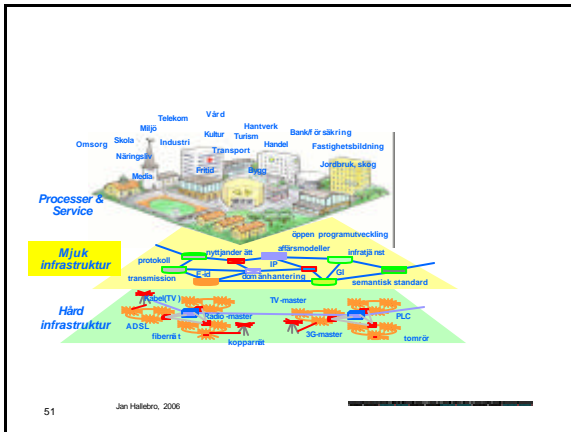
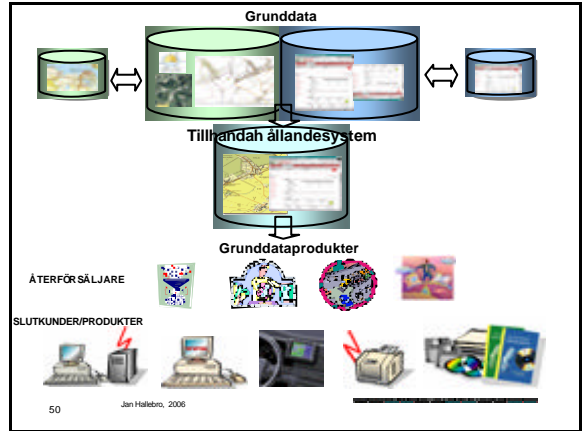
Examples of contents in a business plan

- Current situation
- Business concept
- Economical situation
- Market share
- Co-workers
- Technical solutions



Advisory Boards

- The Map Advisory Board
- The Place-Names Advisory Board
- The Real Estate Development Advisory Board
- The Credit Market Advisory Board



Contents

- Stakeholders
- Governing principles
- Stakeholders and their characteristics
- Various forms of co-operation
- Contents of agreements with some stakeholders

Co-operation with the Municipalities, why?

- The Needs of Market and Society
- No party will manage itself
- Common responsibility
- A new phase in the development work of Lantmäteriet – produce a Swedish SDI
- Joint responsibility for Cadastral Services

Contents

- Stakeholders
- Governing principles
- Stakeholders and their characteristics
- Various forms of co-operation
- Contents of agreements with some stakeholders

Co-operation with the Municipalities, history

- The first stage (up to 1970)
- The second stage (1970 – 1990)
- The third stage (ca 1990 – 2002)
- The fourth stage (2003 - ?)

Why?

- The Needs of Market and Society
- No party will manage itself
- Common responsibility
- A new phase in the development work of Lantmäteriet – produce a Swedish SDI
- Joint responsibility for Cadastral Services

History

- The first stage (up to 1970)
- The second stage (1970 – 1990)
- The third stage (ca 1990 – 2002)
- The fourth stage (2003 - ?)

55

Jan Hallébro, 2006

Framework Agreement

A new framework agreement between Lantmäteriet and the Swedish Association of Local Authorities:

**Further co-operation between
Lantmäteriet and the Municipalities of
Sweden within the Field of Surveying,
Mapping and Geographical Information
2003-12-19
Dnr 106-2003/2410**

56

Jan Hallébro, 2006

Normative Agreement with individual Local Authorities

- Addresses, buildings and topographical details
- Digital Cadastral Map
- National Digital Cadastral Map
- Cooperation in cadastral surveying
- Cooperation in building, up-dating and distributing of commonly owned geographic databases

57

Jan Hallébro, 2006

Examples of co-operation on Regional and National Level

- **Skånekartan** – a co-production between 33 Municipalities via Geodatacenter and Lantmäteriet
- **County-map, Stockholm** – a co-production between the Town of Stockholm and Lantmäteriet
- **The National Road Database** – Co-operation between National Road Administration, the Swedish Forest-industry, the Municipalities and Lantmäteriet
- **Objective 2000** – Co-operation between the Municipalities, Lantmäteriet and Systemdevelopers on a common **Userinterface**

58

Jan Hallébro, 2006

Framework agreement between Lantmäteriet and the Swedish Association of Local Authorities

"Further co-operation between Lantmäteriet and the Municipalities of Sweden within the Field of Surveying, Mapping and Geographical Information"

Agreement - Principals and foundation for co-operation

Model for Compensation (Payment)

- Description of cooperationlevels
- Payment according to three cooperationlevels, S1 - S3
- Division into different Informations
- Addresses - Buildings - Cadastral Index Map - Topographical Objects

Catalogue of Objects - Description of Topographical Objects

59

Jan Hallébro, 2006

LANTMÄTERIET



Grunddata i samverkan

Ramavtal - Kommunförbundet och Lantmäteriet Samverkan informationsförsörjning och fastighetsbildning

- | | |
|--------------------------|--|
| Ramavtal | - Principer och grunder för samverkan |
| Ersättningsmodell | - Beskrivning nivåer (S1 – S3) och beräkning
- Indelning i informationslag
- Adresser - Byggnader - NDRK - Övrig topografi |
| Normalavtal | - ABT-avtal (Adresser, Byggnader, Topografi)
- NDRK - DRK - KFF - Gemensamt ägda databaser |
| Objektkatalog | - Beskriver vilka objekt som ingår (topografi) |

60

Jan Hallébro, 2006

Content of normative agreement

1. **Agreement** - Principals and foundation for co-operation

2. **Model for Compensation (Payment)**
Description of co-operation levels

Payment according to three co-operation levels, S1 - S3

Division into different Informations
- Addresses - Buildings - Cadastral Index Map
- Topographical Objects

3. **Catalogue of Objects** - Description of Topographical Objects