

FIG MUNICH 2006

Land Information New Zealand

## Cadastral Regulation *As Little as Possible – As Much as Necessary*

Anselm Haanen & Don Grant

FIG 2006 Congress  
Munich, 9 October 2006

TS2.3

FIG MUNICH 2006

Land Information New Zealand

### Presentation Overview

- Cadastral Context & Environment in NZ
- Optimal Regulation
- Outcomes & Objectives
- Example Risk Assessment
- Benefits

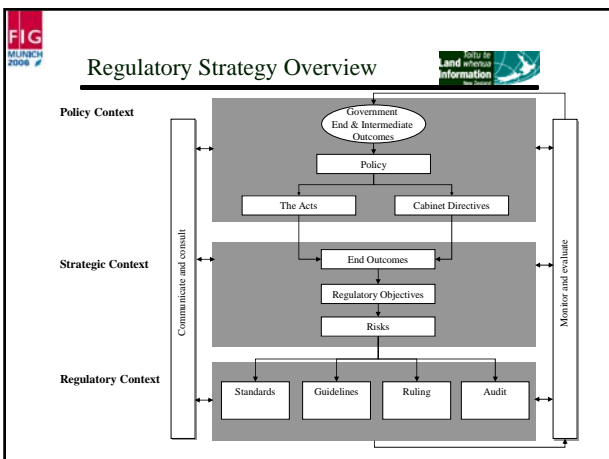
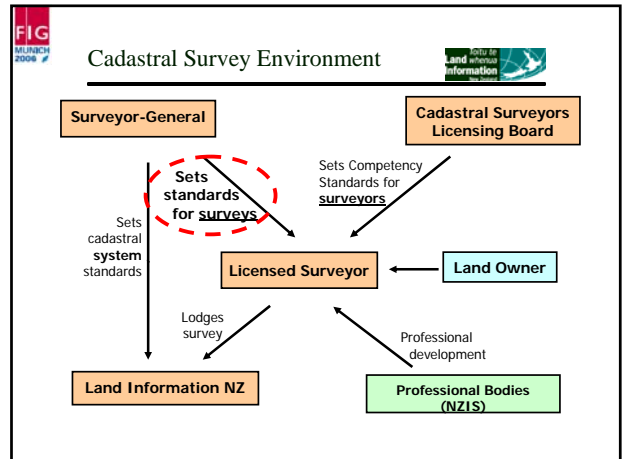
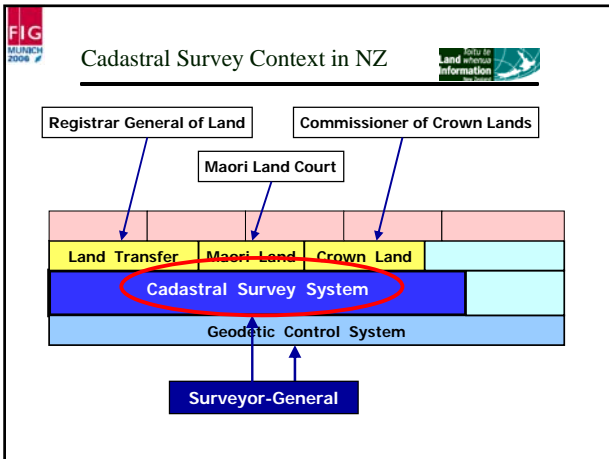
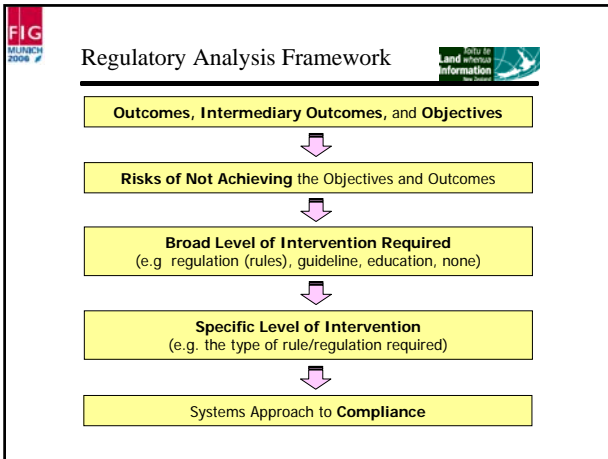


FIG MUNICH 2006

Land Information New Zealand

### Optimal Regulation

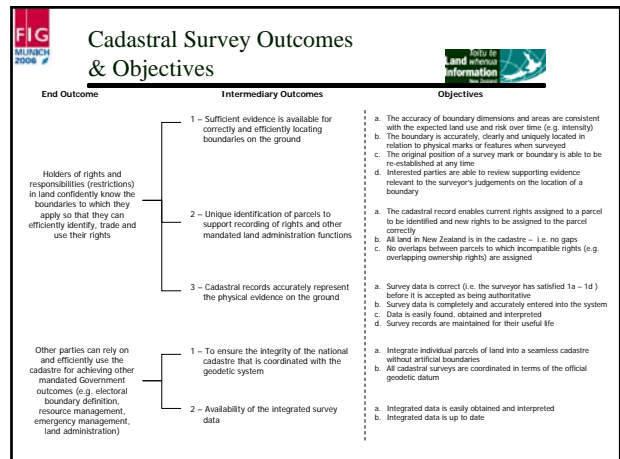
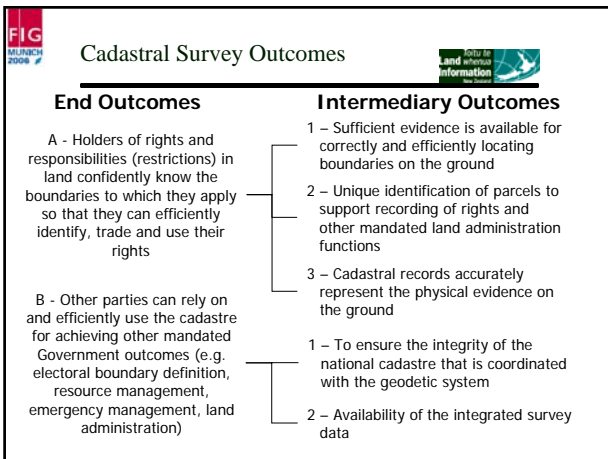
***As little as possible –  
as much as necessary***

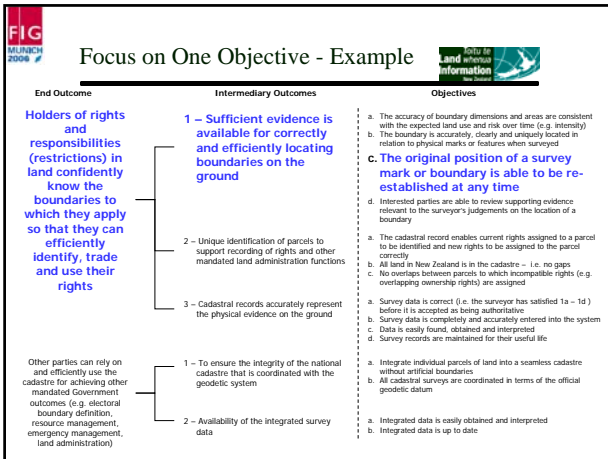


- What are Outcomes and Objectives?**
- Outcomes articulate **WHAT** the Cadastral Survey System should be achieving
  - Answers the question **“WHY** is Government involved?”
  - **HOW** we achieve the outcomes is a different question
  - Provides a long term focus for Cadastral Survey System

- Outcome / Objective Definitions**
- **End Outcome**
    - Result experienced by the community
    - Expressed in non-technical language
    - Provide general high level direction
    - Difficult to measure
  - **Intermediate Outcome**
    - Expected to lead to a desired **End Outcome**
  - **Objective**
    - Required to achieve **Intermediate Outcome** operationally

- Cadastral End Outcomes**
- A. Holders of rights and responsibilities (restrictions) in land confidently know the boundaries to which they apply so that they can efficiently identify, trade and use their rights**
- B. Other parties can rely on and efficiently use the cadastre for achieving other mandated Government outcomes (e.g. electoral boundary definition, resource management, emergency management, land administration)**





**FIG MUNICH 2006** **Land Information**

### Risks for objective A.1.c

**A.1.c The original position of a survey mark or boundary is able to be re-established at any time**

**Risks**

- Insufficient provision of marks or boundary evidence
- Incorrect recording of marks or boundary locations
- Incorrect transfer of survey data into the cadastre
- Insufficient survey marks survive for future definition
- Information on boundary definition not retrievable from the cadastre
- Accuracy of original survey data is unknown

**FIG MUNICH 2006** **Land Information**

### Factors for evaluating risks

**Severity**

- Seriousness of the effect on the achievement of objectives.

**Occurrence**

- How frequently is the risk expected to occur

**Detection (& Correction)**

- Ability to detect and eliminate the risk

**FIG MUNICH 2006** **Land Information**

### A.1.c - Questions & Issues Raised

- **Boundary Monumentation**
  - High rate of attrition / disturbance
  - Client wants pegs at time of sale / marketing
  - Affected by engineering works
  - May need to be reinstated several times
  - Witness marks provide more secure physical framework
  - Survey technology improving ability to locate boundaries
- **Are boundary monuments the best way to manage the risks?**
  - Could surveyors & client/landowner best decide their needs for boundary marking?

**FIG MUNICH 2006** **Land Information**

### Benefits of Approach

- Cadastral Outcomes are agreed LINZ Outcomes
- Clear justification for **all** requirements in Rules
- Compliance costs can be justified
- Action following non-compliance justified
- Input and agreement from:
  - Survey profession
  - Managers of tenure systems (eg RGL, Maori Land Court, Commissioner of Crown Lands)
  - Operational managers (processing & database)
- Surveyors decide **how** best to meet requirements
  - Flexibility, changing technology

**FIG MUNICH 2006** **Land Information**

### Questions?