

# Niue Maritime Boundaries Delimitation Project

Christchurch FIGMM

30<sup>th</sup> April – 6<sup>th</sup> May 2016

Hubert Mana Kalauni

Secretary for Justice

Department of Justice, Lands and Survey

Ministry of Social Services (MOSS)

## **Department of Justice, Lands and Survey House the following Divisions**

- Administration, Registration of Births, Deaths & Marriage & General Elections
- High Court – Land Division & Civil/Criminal Division
- **Survey and Land Management**
- Community Development – Social Welfare & Social Dev Services

# Survey and Land Management

The Division is responsible for:

- All Surveys – primarily cadastral/title
- GIS/LIS
- Land Title Registration
- Management of Crown Land and Properties
- **Assisting with the Maritime Boundaries Delimitation project (technical data).**

Division staff by

- 2 surveyors, 3 chainmen, 1 GIS technical officer, 4 survey cadets, draughting officer and Land registration officer.

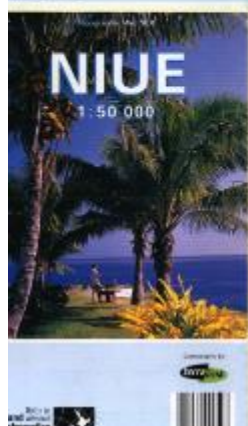
# Niue geography and location

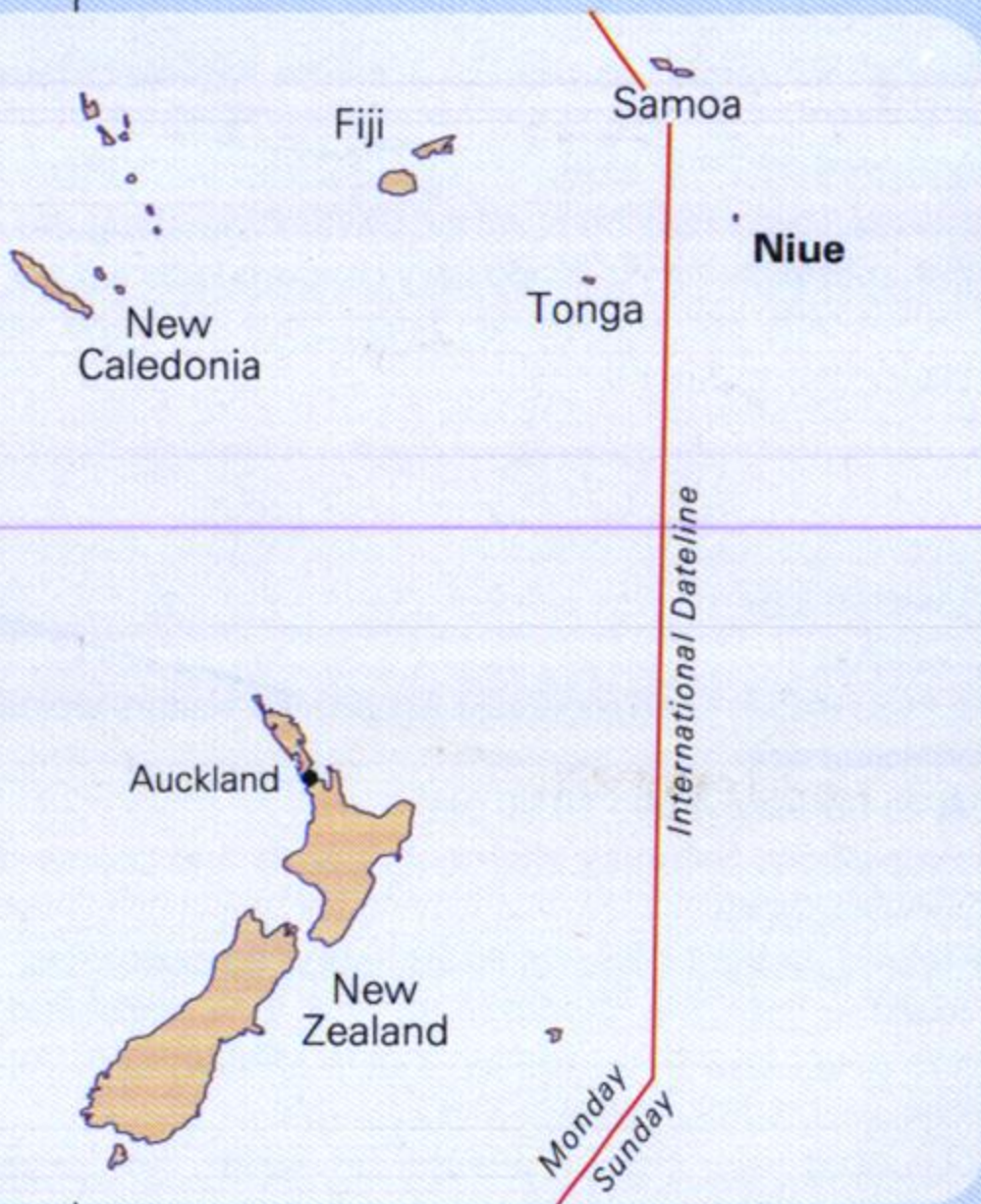
An isolated raised coral atoll consist of two terraces

- the first is at about 25 -35 metres above MSL
- 2nd at 70 metres.
- The centre of the island was once a lagoon and is lower than the top terrace, at about 45 metres above MSL.
- Approximately 21 km long and 18 km wide, no hills, no running streams or surface water

# Niue geography and location

- Niue Total land area is 260 sq km  
95% Niuean land & 5% Crown  
Land not for sale, can lease
- Population at about 1 300 (2015)
-





AI

A

# Niue Maritime Boundaries Delimitation Overview

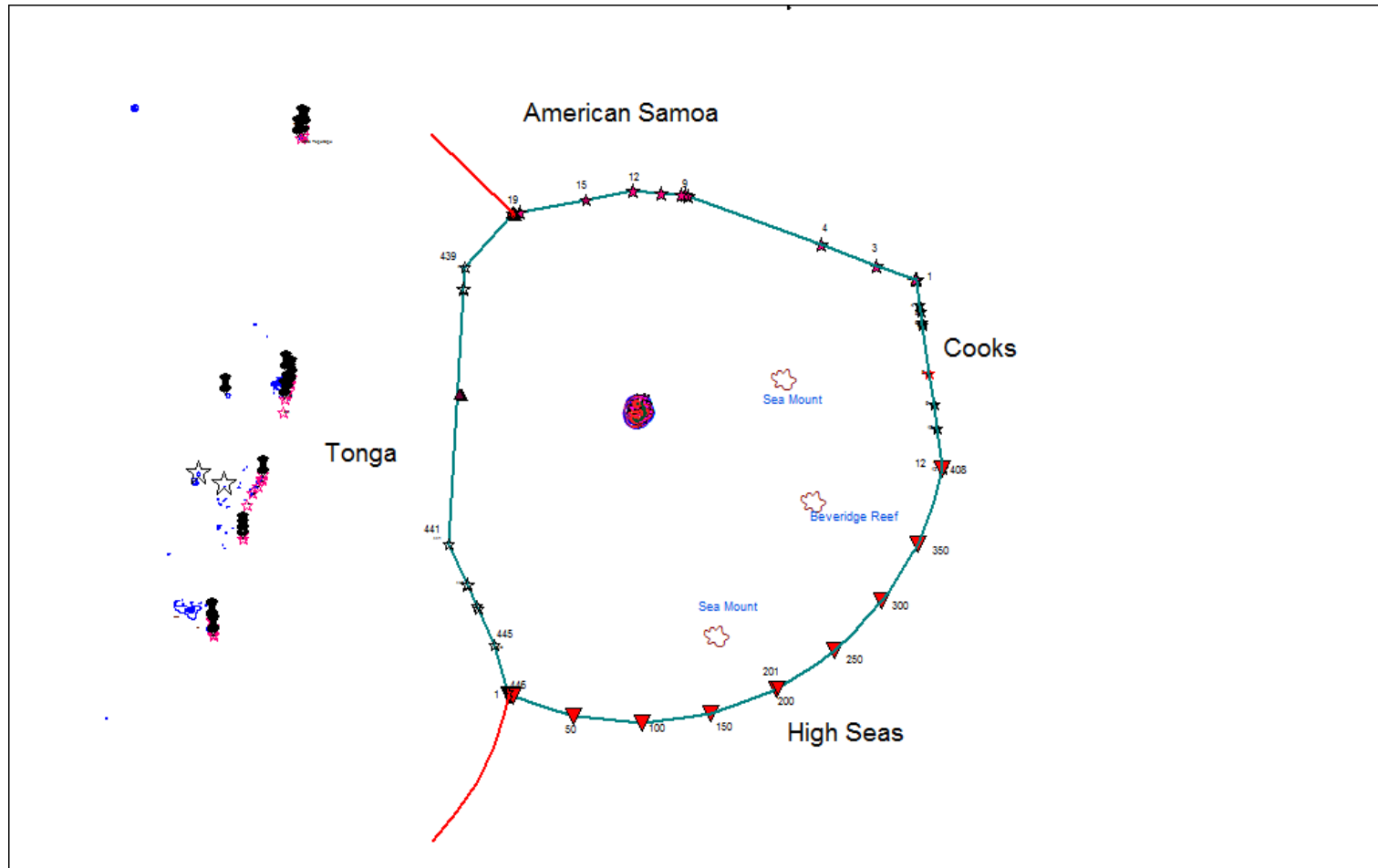
- Niue maritime neighbouring states are
  - Tonga 470 km to the west,
  - American Samoa 550 km to the north,
  - Cooks 900 km to the east and
  - the high seas to the south.



# Niue Maritime Boundaries Delimitation Overview

- The total peripheral EEZ distances total 2,100 km (approx)
- 630 km shared with Tonga
- 550 km with American Samoa
- 230 km with the Cooks, and
- 700 km with the high seas
- The total EEZ area comprised approximately of 320, 000 sq km

# Niue EEZ Maritime Boundaries



# Niue Maritime Boundaries Delimitation. Background and Development.

- The project for Niue starts in the early 1991
- By way of Maritime Boundary workshops in Suva, Apia, Rarotonga, Toronto Canada etc... attended by both Legal & Technical officers
- 1992 FFA commence compiling the first set of baseline data for the Territorial Sea limits.
- Compiled by Grant Boyes, FFA Coordinator.
- Facilitated one workshop for local staff.

# Niue Maritime Boundaries Delimitation Background and Development.

- In 2005 Niue with the assistance of SOPAC recomputed the baseline data for the Territorial Sea Limits using MarZone.
- Based on Niue Topographical map, 1991 GPS survey and satellite imageries.
- Data in terms of WGS84.
- The baseline data set was officially endorsed by Niue that year.
- The same data set was also use to compute the limits for Niue CZ and EEZ with the Cooks.

# Niue Maritime Boundaries

---

**Pacific Islands Regional Maritime Boundaries Information System  
(PIRMBIS)**

**Niue Maritime Boundaries Project**

December 2005  
SOPAC Technical Report

---

# Signing of the 2005 Report SOPAC Suva



# Basepoints

Annex II: Table Showing Basepoints for 12M, 24M and 200M Limits and their Attributes

Ufi	Feature	Feature_Id	Object_Id	Mar_Dist	Accuracy	Category	Feature_Type	Cp_Index	Country_Name	Island_Name	Longitude	Latitude
NIUBP0001	Basepoint	NIU00001	NIU001	200	NIU_IKNS_2001	ISL	NBL	717	NIUE	Niue atoll	-169.84797	-18.9524
NIUBP0002	Basepoint	NIU00001	NIU001	200	NIU_IKNS_2001	ISL	NBL	722	NIUE	Niue atoll	-169.852082	-18.952758
NIUBP0003	Basepoint	NIU00001	NIU001	24	NIU_IKNS_2001	ISL	NBL	760	NIUE	Niue atoll	-169.874302	-18.958098
NIUBP0004	Basepoint	NIU00001	NIU001	200	NIU_IKNS_2001	ISL	NBL	766	NIUE	Niue atoll	-169.876686	-18.958651
NIUBP0005	Basepoint	NIU00001	NIU001	200	NIU_IKNS_2001	ISL	NBL	768	NIUE	Niue atoll	-169.877639	-18.958969
NIUBP0006	Basepoint	NIU00001	NIU001	200	NIU_IKNS_2001	ISL	NBL	771	NIUE	Niue atoll	-169.879183	-18.959827
NIUBP0007	Basepoint	NIU00001	NIU001	200	NIU_IKNS_2001	ISL	NBL	776	NIUE	Niue atoll	-169.88071	-18.960743
NIUBP0008	Basepoint	NIU00001	NIU001	200	NIU_IKNS_2001	ISL	NBL	791	NIUE	Niue atoll	-169.886289	-18.964936
NIUBP0009	Basepoint	NIU00001	NIU001	200	NIU_IKNS_2001	ISL	NBL	810	NIUE	Niue atoll	-169.891825	-18.969603
NIUBP0010	Basepoint	NIU00001	NIU001	200	NIU_IKNS_2001	ISL	NBL	816	NIUE	Niue atoll	-169.892867	-18.970523
NIUBP0011	Basepoint	NIU00001	NIU001	200	NIU_IKNS_2001	ISL	NBL	817	NIUE	Niue atoll	-169.893314	-18.970948
NIUBP0012	Basepoint	NIU00001	NIU001	200	NIU_IKNS_2001	ISL	NBL	820	NIUE	Niue atoll	-169.893987	-18.971647
NIUBP0013	Basepoint	NIU00001	NIU001	200	NIU_IKNS_2001	ISL	NBL	827	NIUE	Niue atoll	-169.895267	-18.973099
NIUBP0014	Basepoint	NIU00001	NIU001	200	NIU_IKNS_2001	ISL	NBL	830	NIUE	Niue atoll	-169.895816	-18.973723
NIUBP0015	Basepoint	NIU00001	NIU001	24	NIU_IKNS_2001	ISL	NBL	840	NIUE	Niue atoll	-169.898496	-18.977304
NIUBP0016	Basept12	NIU00001	NIU001	0	NIU_IKNS_2001	ISL	NBL	841	NIUE	Niue atoll	-169.89891	-18.977897
NIUBP0017	Basept12	NIU00001	NIU001	0	NIU_IKNS_2001	ISL	NBL	911	NIUE	Niue atoll	-169.918716	-19.004028
NIUBP0018	Basepoint	NIU00001	NIU001	24	NIU_IKNS_2001	ISL	NBL	917	NIUE	Niue atoll	-169.921097	-19.00675
NIUBP0019	Basepoint	NIU00001	NIU001	200	NIU_IKNS_2001	ISL	NBL	918	NIUE	Niue atoll	-169.922339	-19.00828
NIUBP0020	Basepoint	NIU00001	NIU001	200	NIU_IKNS_2001	ISL	NBL	920	NIUE	Niue atoll	-169.922823	-19.009303
NIUBP0021	Basepoint	NIU00001	NIU001	200	NIU_IKNS_2001	ISL	NBL	926	NIUE	Niue atoll	-169.923536	-19.011009
NIUBP0022	Basepoint	NIU00001	NIU001	24	NIU_IKNS_2001	ISL	NBL	928	NIUE	Niue atoll	-169.923699	-19.01148
NIUBP0023	Basepoint	NIU00001	NIU001	200	NIU_IKNS_2001	ISL	NBL	63	NIUE	Niue atoll	-169.949779	-19.073682
NIUBP0024	Basepoint	NIU00001	NIU001	200	NIU_IKNS_2001	ISL	NBL	64	NIUE	Niue atoll	-169.949998	-19.074313
NIUBP0025	Basepoint	NIU00001	NIU001	200	NIU_IKNS_2001	ISL	NBL	65	NIUE	Niue atoll	-169.95006	-19.075048
NIUBP0026	Basepoint	NIU00001	NIU001	200	NIU_IKNS_2001	ISL	NBL	66	NIUE	Niue atoll	-169.949744	-19.075917
NIUBP0027	Basepoint	NIU00001	NIU001	24	NIU_IKNS_2001	ISL	NBL	68	NIUE	Niue atoll	-169.949442	-19.076515

# Normal baseline





# Normal Baseline Critical with Tonga



# Niue Maritime Boundaries Delimitation Negotiation and Signing

- Negotiation with the Cooks also commenced with the exchange of provisional baseline data in Suva in 2005.
- Delayed due to existing data for Palmerston island not in terms of WGS84.
- The baseline for Palmerston, Cooks, was updated early 2012.

# Niue Maritime Boundaries Delimitation Negotiation and Signing

- Negotiation with the Cooks also commenced with the exchange of provisional baseline data in Suva in 2005.
- Delayed due to existing data for Palmerston island not in terms of WGS84.
- The baseline for Palmerston, Cooks, was updated early 2012.
- Final Median line computed in 2012
- That agreement was concluded and signed in 2012

# Niue Maritime Boundaries Delimitation Negotiation and Signing

- Median line with American Samoa.
- The initial and first contact commenced in the 1991 when American Samoa approach the Niue government through the Ministry of External Relations and Trade to start the negotiation on maritime boundary.

# Niue Maritime Boundaries Negotiation and Signing

- Median line with American Samoa.
- The initial and first contact commenced in the 1991 when American Samoa approach the Niue government through the Ministry of External Relations and Trade to start the negotiation on maritime boundary.
- The median data was computed by the AS authority using the baseline data from the FFA report.
- The agreement with American Samoa was signed in 1997.

# Maritime Boundaries

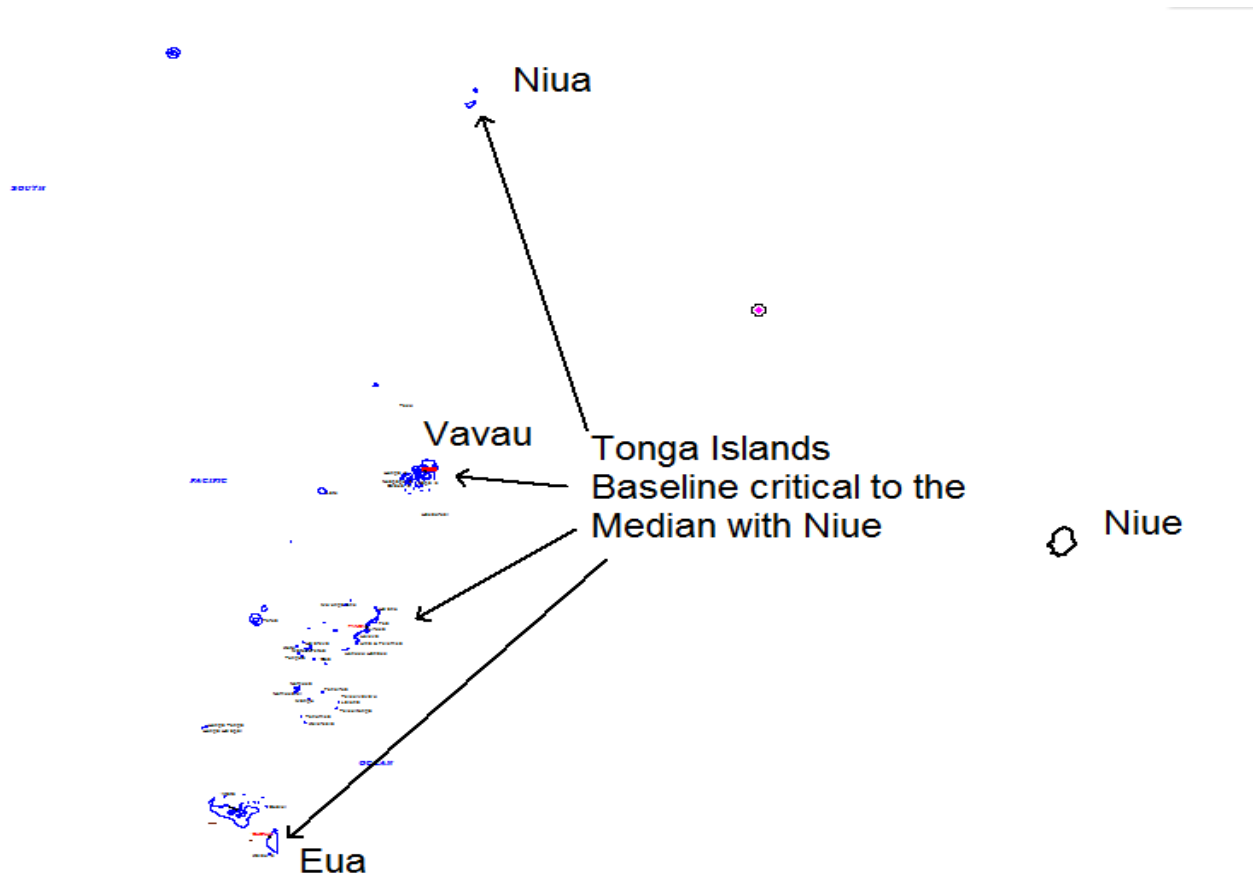
## Concluded and Signed 1991 - 2012

- The agreement with American Samoa was signed in 1997.
- The agreement with the Cooks was signed in 2012.
- Both Agreements Deposited with the UN.

# Common Boundary with Tonga

- The two countries have yet to finalize the median line but currently checking the relevant baseline data.
- And these are Provisional baseline data exchanged late 2015
- A smaller working session is planned in Nadi early June 2016 to progress with the technical and legal negotiations between Tonga and Niue. Assist by Maritime Boundaries Team of the Geoscience Division, Pacific Community (SPC)

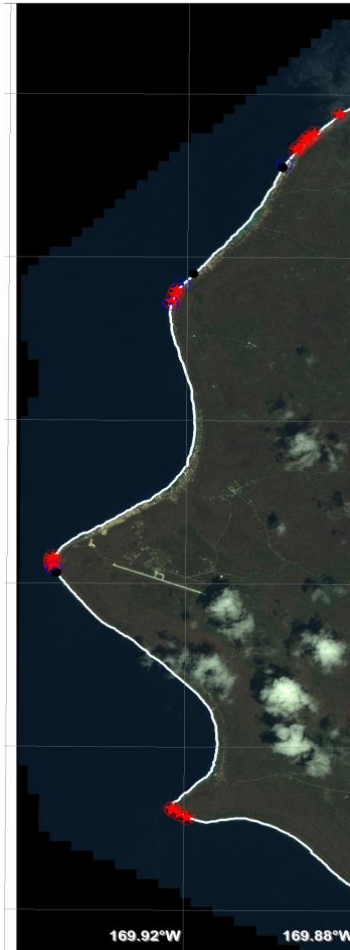
# Tonga Critical Baseline





# Niue baseline

## All on the western side



# Conclusion

Niue is looking forward to conclude its boundaries agreement with Tonga by the end of 2016 or 2017.

Fakaue and thank you.