

welcome

Kadaster

**K**

**Country report NL for FIG Commission 7 Seoul 2007**

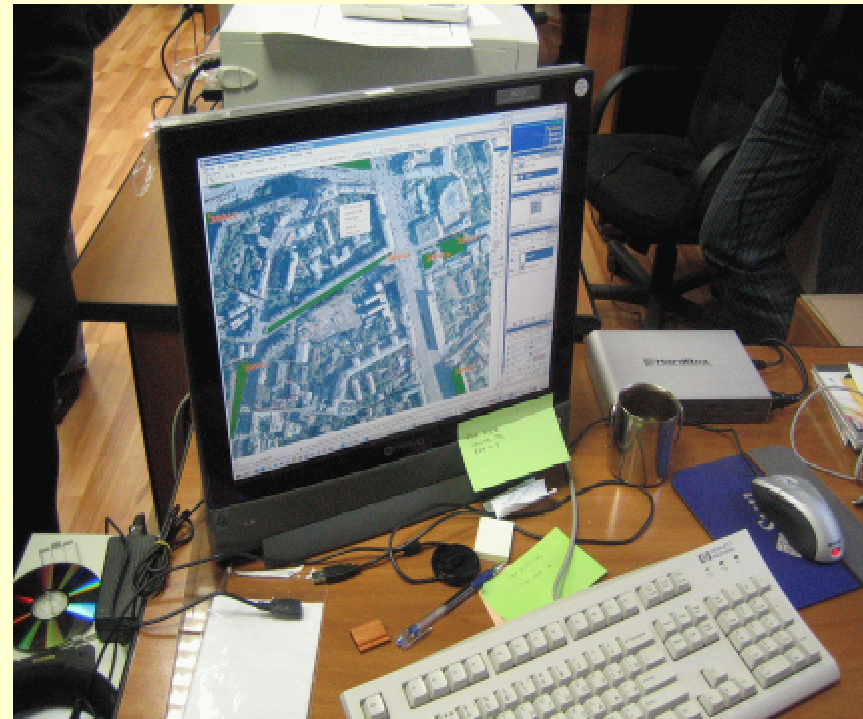
**175**  
jaar Kadaster

# Meaning of information

---

- Legal meaning land registers and maps
- Is it a representation of the truth??
- Is the representation guaranteed by the State?
- Trend: people rely on government information

STATUS: RESEARCH REPORTS  
UNDER DEBATE



# Multi use of land

---

- 3D constructions and multi use at subsurface, surface and above surface
- Underground infrastructure
- National policy document
- Trend: 3 D property rights

STATUS:

TAKE OVER KLIC'S

+

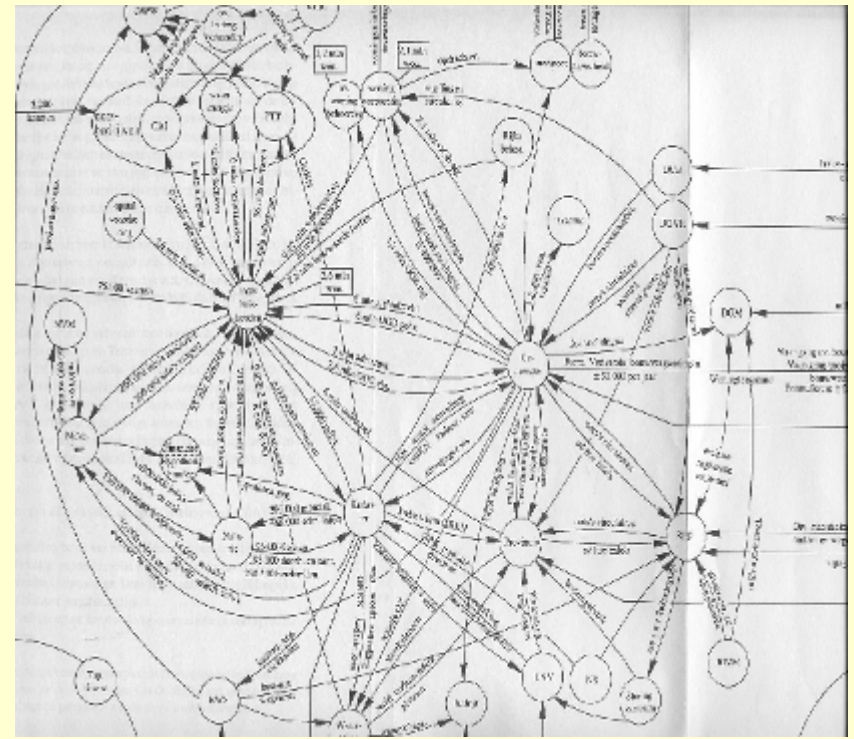
RESEARCH REPORTS



# Core of Spatial Data Infrastructure

- No SDI without framework data (incl. foundation data)
- Restructuring governmental information architecture
- Trend: towards authentic registers

STATUS:  
KEY REGISTERS LAWS  
NATIONAL ACCESS BY US



# Completeness land information

- Housing rent, agricultural lease
- Servitudes, encumbrances
- Property value
- Land use
- Risk management
- Trend: information should be complete

STATUS:  
PUBLIC ENCUMBRANCES LAW



# Information for the land market

- Register Popular Census, Register legal entities
- Registers legal constraint, bankruptcy, wills, marriage settlements, guardianship
- Trend: organize data integration

STATUS:  
NO PROGRESS

IN DE AFGELOPEN MAANDEN BEMIDDELDE HET TEAM EXCLUSIEVE WOONHUIZEN O.A. BIJ DE AAN- EN VERKOOP VAN DE VOLGENDE PANDEN:



Arnhem, Stralaan 13  
Heelsum, Bunchomsweg 21  
Doorwerth, Utrechtsweg 283  
Doorwerth, Van Aldenburghlaan 15  
Doorwerth, Van Aldenburghlaan 1  
Arnhem, Diepenbracklaan 70  
Arnhem, Van Heemstralaan 11  
Doorwerth, W.A. Scholtenlaan 10  
Renkom, Nieuweweg 19-21  
Oosterbeek, Mariaweg 8  
Oosterbeek, Utrechtsweg 164  
Wolffezee, Wolfbezweg 95  
Doorwerth, W.A. Scholtenlaan 21  
Arnhem, Moosweg 21  
Oosterbeek, Nassaulaan 24  
Doorwerth, Bernadottelaan 22  
Arnhem, Zypendaalweg 3  
Arnhem, Burgemeestersplein 11  
Oosterbeek, Schelmsweg 22  
Oosterbeek, Emmasstraat 24  
Arnhem, Van Heemstralaan 25  
Rosendaal, Beekhuizenweg 4  
Daicon, Melrose 96  
Driel, Casimirstraat 5

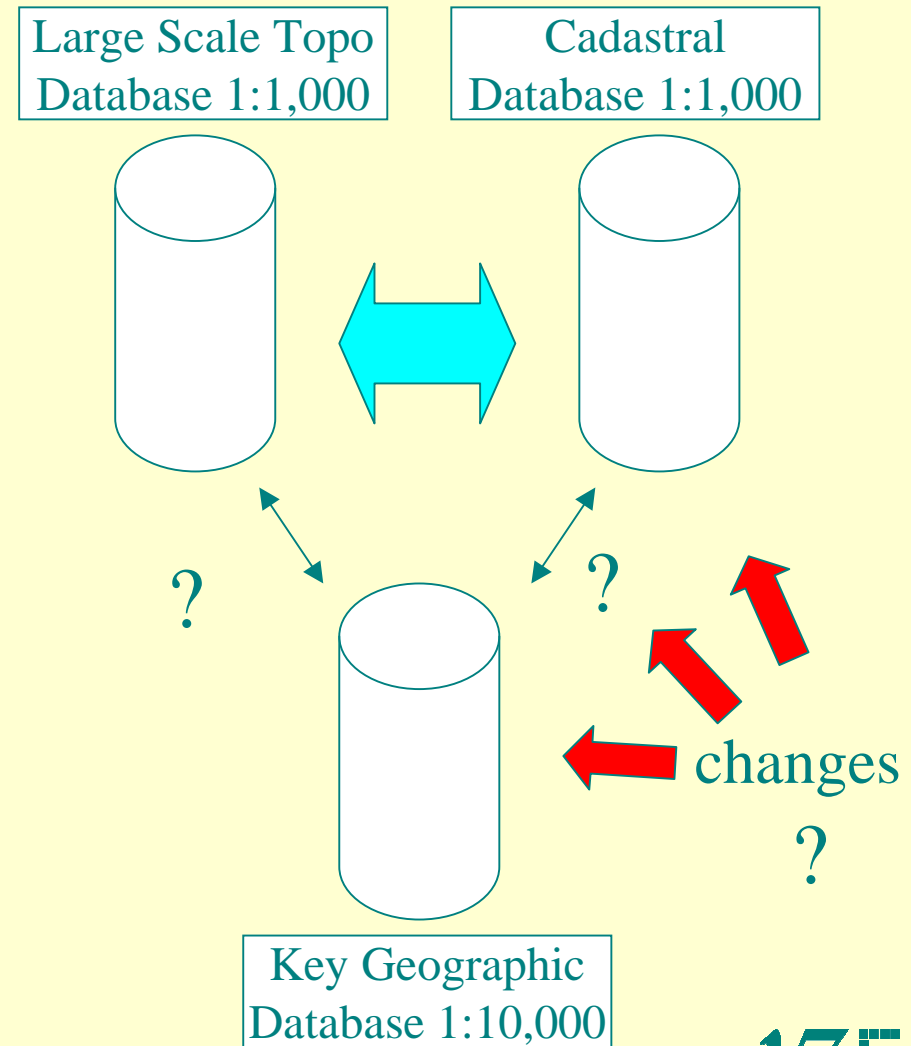
Engelsing Makelaars®  
"T MEESTE IN HUIS"

102 Engelsing Exclusief zomer 2002

# Geographic Information

- Mix of spaghetti, topological correctness and object-orientation.....
- What about data-sharing, and mutation propagation.....
- Trend: data sharing and integration

STATUS:  
RESEARCH MUTATION  
PROPAGATION  
RESEARCH  
GENERALISATON  
FINANCING LARGE SCALE  
TOPO BASE MAP



# Perspective European Union

- Free movement of people, goods and capital
- Influence: PSI, Inspire, Directives
- Art 295 European Treaty
- Trend: European harmonization

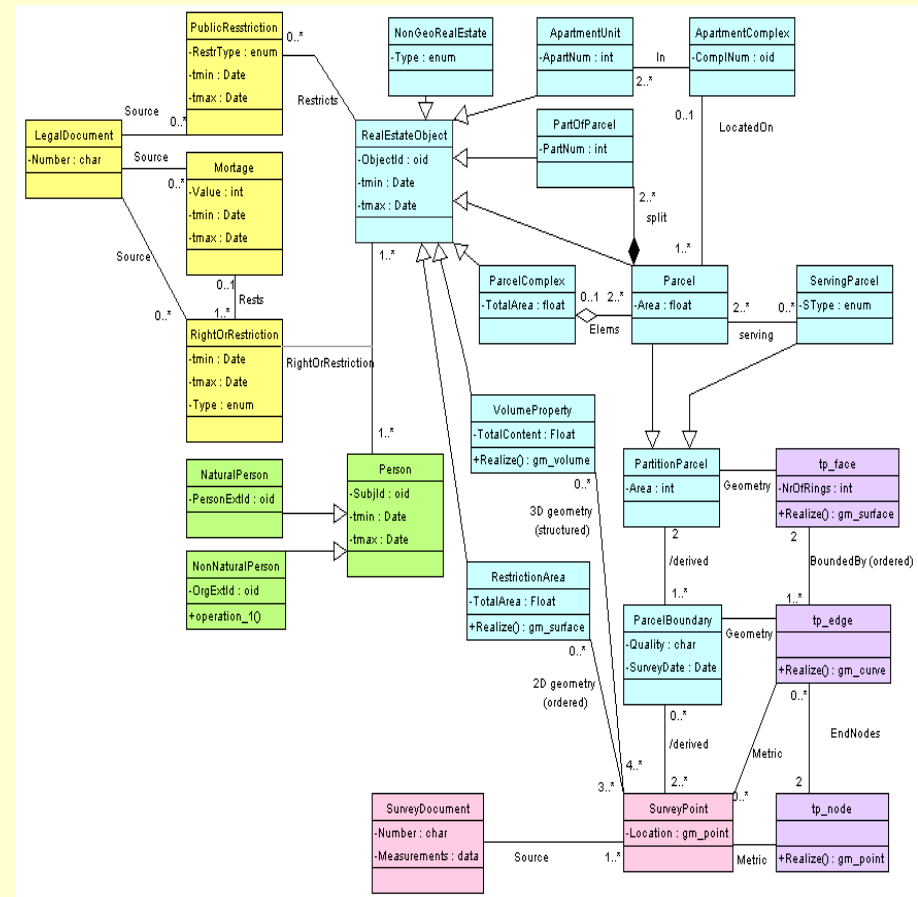
STATUS:  
INSPIRE OK  
PSI SOME RESISTANCE



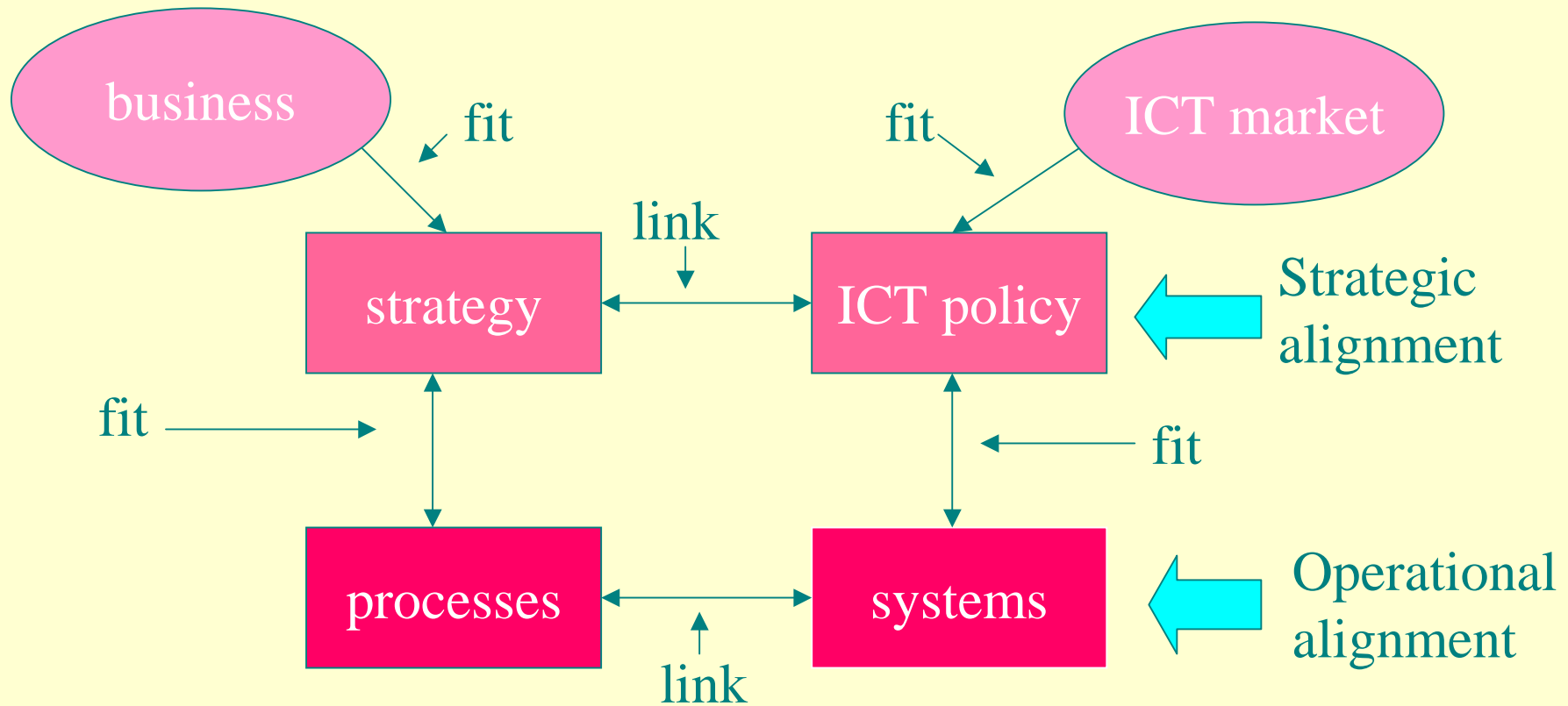


# IT opportunities in the IT market

- Data acquisition
  - satellite
  - radar/laser
  - GPS
  - biometrical
- Database technology
  - standards
  - quick search
- Data communication
  - central/de-central
  - web enabling + portals
  - e-payment
  - enterprise resource planning
  - customer relation management



**Philosophy:**  
**Alignment of business strategy and ICT options**



# Impact

---

- From 16 offices via 6 to may be 1 (?)
- Land surveyors field office + home office
- Local desks for citizens (townhalls?)
- From 16 directors to 5 (realised)
- Centralised instead of decentralised management (in process)
- Workflow management
- From 2200 to 1500 staff in 2010 (in process)

---

**Thank you**